

*"It has been fantastic for New Horizons staff and members to meet neighbours and as well as businesses and organisations, and to learn of the sheer number of community assets within this thriving community. We have so many more people, potential partners and assets to work alongside - which in turn strengthens our organisation."*

Edwina Dick, Acting CEO, New Horizons Tasmania, 2020

*"I have always regarded Council as interactive and proud of their achievements and city. This is an example."*

Kings Meadows Community Workshop participant, 2021

*"The film crew harvested stories. As filmmakers we believe in the power of stories. We need stories like we need sunshine. They weave our lives together. They turn away our fears."*

Evi van der Niet, ACTION CREW, 2018

*"It has been a great learning opportunity for me and has fuelled my desire to work in community development."*

TasTAFE student, 2017

*"I learnt that if you have an idea, all you have to do is speak up."*

Noah Colgrave, Student Leader, Youngtown Primary School, 2020

#### FOR MORE INFORMATION CONTACT:

**Sarah McCormack**

Community Connector, City of Launceston

**Call:** 0428 109 948

**Email:** Sarah.McCormack@launceston.tas.gov.au

**Learn more:** [www.launceston.tas.gov.au/LearningSites](http://www.launceston.tas.gov.au/LearningSites)

This publication was produced in 2022

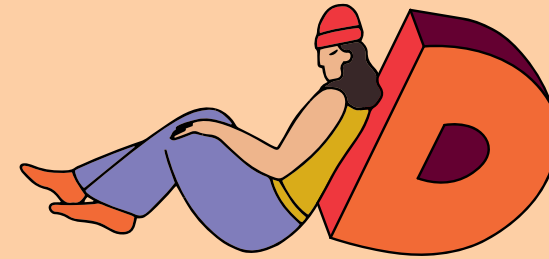
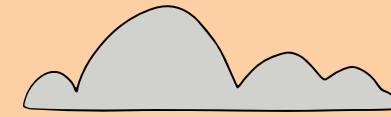
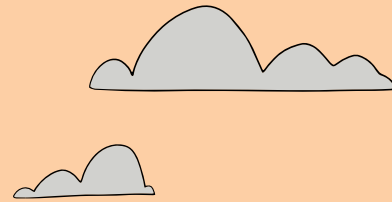
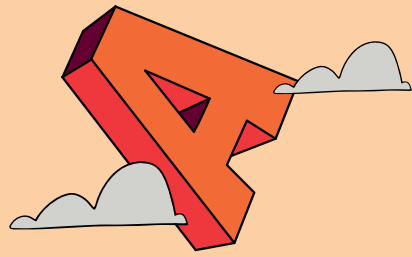
**City of Launceston**  
**Asset Based Community Driven Effort (ABCDE)**  
**Learning Sites**

## HOW WE DO

# ABCDE

## IN LOCAL COMMUNITIES





## WHAT IS AN ABCDE LEARNING SITE?

At the City of Launceston an Asset Based Community Driven Effort (ABCDE) Learning Site enables a community to identify their assets, build connections, and create change in the heart of the community with a focus on 'what's strong, not what's wrong.'

Community Builders are committed to building their communities and guiding others in this journey. The Builders have the passion to take action, make positive change and directly shape their community's future. Everyone can get involved!

### Who is involved?

This is a partnership between the City of Launceston as the Community Connector, the Bank of I.D.E.A.S as the creators of the model and motivated local Community Builders.



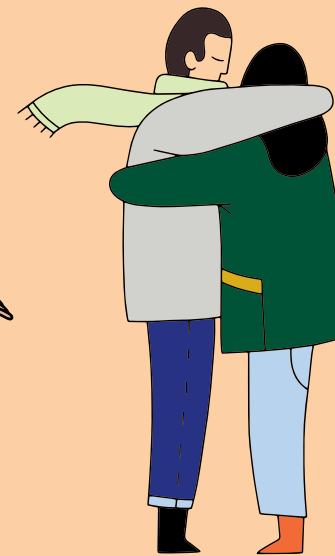
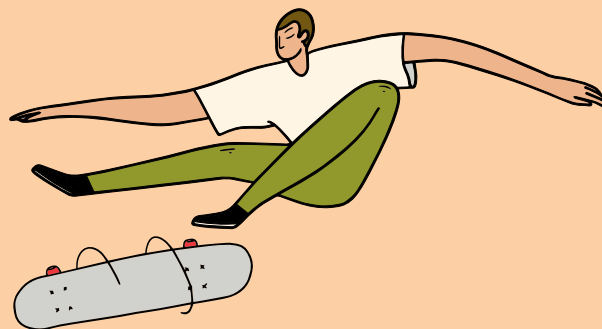
## WHAT DO THEY DO?

The development of a Learning Site is a 12-18 month process in a community. The City of Launceston employs a place-based Community Connector who guides a group of identified Builders through a community-led, flexible process based on the Bank of I.D.E.A.S' Eight Touch Stones.

The Community Connector identifies local individuals, businesses, schools, groups and organisations and forms connections.

From there, a team of Community Builders meet regularly throughout the process. The team shares what they care about in their community and build connections with others through activities and social interactions.

Community Builders are supported as they develop their vision and plans. We celebrate the community's achievements and reflect on what happens.



## HOW IS COMMUNITY BUILDING WORK SUSTAINED?

Supporting Community Builders to continue to strengthen communities beyond the timeframe of an official City of Launceston ABCDE Learning Site is really important. Community Builders may need support so they can continue to support others to thrive.

The community's involvement in an ABCDE Learning Site is determined by the community itself so the sustainability of the practice needs to be developed with the community. It's not a one size fits all approach but we do know what works for communities to keep the strengths based work going.

Council's Community Connector and Community Builders work together to develop a unique continuity plan by considering experience, resources, connections, learning and mentoring. The community continues to practice the asset based approach with support from Council.

Asset based community work is sustained throughout a Learning Site by the very fact of exposing a community to the program. The experience, skills development, education and projects extending over a long period are what build Community Builders.

