

Living as a Senior

in Launceston

Edition 11
December 2016

Newsletter



Mayor's Message

During the Christmas period, the things that are important to us are at the forefront of our minds. It's a time to be thankful for all the good things in our lives, give thanks to the people who enrich us and reflect upon the year that has been.

I'd like to take this opportunity to thank and acknowledge all our senior citizens for their contribution to our city, not only during this year but in previous years.

Your commitment to Launceston has helped make our city what it is today – a place for all to enjoy the natural and built beauty with a way of life that is at once relaxing and invigorating. Thank you again for your dedication in ensuring Launceston is a city that will continue to grow and be embraced by future generations.

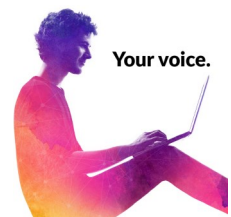
On behalf of the City of Launceston, I wish you all a joyous Christmas and a fantastic new year.

Albert van Zetten
Mayor

Have your say

Visited our online consultation platform, Your Voice, Your Launceston yet? Hop on, join the Community Panel and have your say on key issues in the municipality.

www.yourvoicemyourlaunceston.com.au



Celebrating Seniors in 2016

It's been a wonderful year at Council celebrating seniors in our community. We had three Morning Tea and Information Sessions in the exquisite Town Hall Reception Room with over 150 people attending. Speakers included the team at Launceston Aquatic, Bev Allen Emergency Management Officer, Sally Coltheart Vice President QVMAG Friends Committee, Jon Addison Curator History Queen Victoria Museum and Art Gallery, Owen Tilbury Tasmanian BOFA Festival Director, Geoff Drake Volunteer at the Basin Cottage and Sarah Luate, a member from the City of Launceston Youth Advisory Committee played the piano.

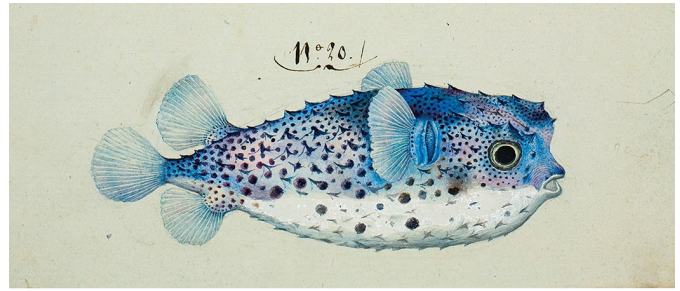
The As I age chalk boards in Customer Service at Town Hall in Senior's Week attracted people of all ages contributing their thoughts about ageing.

Thank you to all the City of Launceston staff who have contributed articles to this quarterly newsletter which is especially produced for older people living in Launceston.

Don't forget Music in the Park is on again in January 2017 in the beautiful City Park and the details are included in this edition.

Wishing you a wonderful Christmas and New Year and looking forward to our senior program in 2017.

Sarah McCormack
Community Development Project Officer
City of Launceston



Rare French Material On Show

An exhibition of over 80 exquisite illustrations of people, coastlines, birds, animals and marine life created by the artists on French navigator Nicolas Baudin's voyage to Australia, will be on show at the Queen Victoria Art Gallery, Royal Park, from 7 January 2017.

The Art of Science: Baudin's Voyagers 1800-1804 includes some of the first European portraits of Aboriginal people on Maria and Bruny Islands. The exhibition showcases other rare material from French collections, such as the engraved copper plate used to print the first complete map of Australia in 1811, Baudin's chronometer from the *Geographe*, and hand-drawn maps that have never been displayed before.

The loan of the artworks for this exhibition was approved by the Municipal Council of the city of Le Havre and required the joint efforts of the six Australian host museums and diplomatic negotiations between France and Australia. To leave France it required the permission of the French Ministry of Culture and Communication.

Image: Detail of Porcupine fish. Artist, Charles-Alexandre Lesueur.

What's On In Launceston

December 2016 - February 2017

<p>14 December Christmas Carols and Afternoon Tea Elphinwood Gardens Ph. 6331 6202</p>	<p>21 December Christmas Luncheon Elphinwood Gardens Ph. 6331 6202</p>	<p>31 December Royal Eve New Years Eve Event Royal Park www.royaleve.com.au</p>
<p>6 January - 26 March RAW2! YOUNG TALENT ON STAGE Ph. 6323 3666 www.theatrenorth.com.au</p>	<p>10 January HOY similar to Bingo Launceston Gardens Ph. 6331 3244</p>	<p>Sundays in January and Australia Day Music in the Park City Park Ph. 6323 3000 www.launceston.tas.gov.au</p>
<p>25 January Chilli Skyfire Royal Park Ph. 6331 4844 www.chillifm.com.au</p>	<p>4 - 11 February Launceston Tennis International Launceston Regional Tennis Centre www.tennis.com.au/tas</p>	<p>10 - 12 February Festivale City Park Ph. 6334 9990 www.festivale.com.au</p>
<p>14 February Valentine's Day Lunch Launceston Gardens Ph. 6331 3244</p>	<p>17 February Hawthorn v Geelong (NAB challenge) Aurora Stadium, York Park, Launceston Ph. 6323 3666 www.theatrenorth.com.au</p>	<p>19 February New Horizon's Stadium Step Up for Inclusion Aurora Stadium Ph. 6326 3344 www.newhorizonsclub.org.au</p>
<p>22 February Launceston Cup Mowbray Racing Centre Ph. 63261070 www.goracingtasmania.com.au</p>	<p>25 February Symphony Under the Stars City Park Ph. 1800 001 190 www.tso.com.au</p>	<p>For more information on what's happening in Launceston visit: destinationlaunceston.com.au</p>

Markets

Harvest Launceston Farmers' Market

Car Park, 71 Cimitiere Street, Launceston / Every Saturday / 8:30am to 12:30pm

Avalon Market

Avalon Arts & Function Centre, 9 Killafaddy Road, Newstead / Every Sunday / 9am to 2pm

Launceston Esk Market

Launceston Showgrounds, Forster Street, Invermay / Every Sunday / 9am - 2pm

Lilydale Village Market

Memorial Hall, Main Road, Lilydale / Second Sunday of the month / 10am to 2pm

Your Museum and Art Gallery

Visit Australia's largest regional museum. QVMAG has two sites to enjoy: Museum at 2 Invermay Road, Inveresk and Art Gallery at 2 Wellington Street, Launceston.

ON SHOW at the Museum

The Great War 1914-18: Sacrifice and Shadows until August 2018

Permian Monsters: Life Before the Dinosaurs until 26 February 2017

\$5 pp, adults at child's price

Revive 2016: sustainable art tasmania until to 12 February 2017

ArtRage 2016 Collection
17 December to 18 April 2017

ON SHOW at the Art Gallery

Udo Sellbach: And still I see it until 30 April 2017

Transformations: the art of Philip Wolfhagen until 5 March 2017

The Art of Science: Baudin's Voyagers 1800-1804
7 January to 26 March 2017

Christmas Recycling Tips

When you are cleaning out the house for Christmas, remember to recycle wisely. Only put recyclable items in the kerbside bin (paper and cardboard, hard plastic, glass, steel cans and aluminium cans). Clothing and household items can be taken to charity shops and many other recyclable materials can be taken to the Launceston Recycling centre and Uptipity.

Take away coffee cups are not recyclable. Consider buying a reusable cup to use when you are going out for coffee over the Christmas holidays.



The Launceston Waste Centre is located in Cavalry Road Mowbray and open every day of the week except Christmas Day and Good Friday.

Customer Service Opening Hours

Usual Opening Hours

Mon to Fri 8.30am to 5.00pm

End of Year Closing Hours

Fri 23 Dec 1pm

Mon 26 Dec to Mon 2 Jan

Reopening Tues 3 Jan at 8.30am

Customer Service

Town Hall
18-28 St John Street
Launceston

Ph. 6323 3000

Emergency (24 hours):

Ph. 6323 3333

Email:

contactus@launceston.tas.gov.au

www.launceston.tas.gov.au

National Relay Service

The City of Launceston is National Relay Service (NRS) friendly. If you have a hearing or speech impairment, call us through the NRS and ask to be connected to 03 6323 3000. Internet relay users can visit www.relayservice.com.au