

No:	ISSUED FOR / DESCRIPTION:	DATE:	REV:
04	REDESIGN	17-10-16	C
03	TOWN PLANNING	29-04-16	B
02	CLIENT REVIEW	27-04-16	A
01	REVIEW	03-02-16	-

DRAWING REFERENCE NOTES:

-

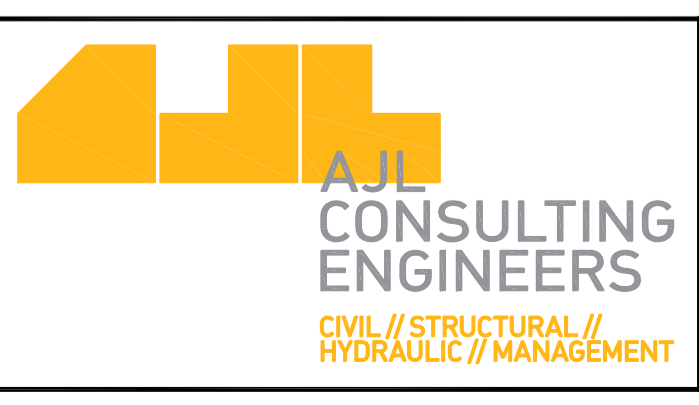
STATUS:
CONTROLLED DOCUMENT

ALL DIMENSIONS ARE IN MILLIMETERS. CHECK AND VERIFY ALL DIMENSIONS ON SITE. DO NOT SCALE. IF IN DOUBT, ASK. ALL WORKS TO BE CARRIED OUT IN ACCORDANCE WITH THE BUILDING CODE OF AUSTRALIA, ALL APPLICABLE AUSTRALIAN STANDARDS & ANY REQUIREMENTS OF LOCAL AUTHORITIES. © A.J.L. CONSULTING ENGINEERS. THIS DOCUMENT MAY ONLY BE USED FOR THE PURPOSE FOR WHICH IT WAS PREPARED. THE DOCUMENT MUST NOT BE USED, RETAINED OR COPIED FOR ANY OTHER PURPOSE WITHOUT THE PERMISSION FROM A.J.L. CONSULTING ENGINEERS.

ABN 29 153 963 092
ABP No. CCS452A
E info@ajlengineers.com.au
W www.ajlengineers.com.au

LAUNCESTON OFFICE:
69 MARGARET STREET
LAUNCESTON // TAS // 7250
PO BOX 7714
LAUNCESTON // TAS // 7250
P (03) 6334 0834

NORTH WEST OFFICE:
LEVEL 1 - 83a WILSON STREET
BURNIE // TAS // 7320
PO BOX 925
BURNIE // TAS // 7320
P 0418 642 550



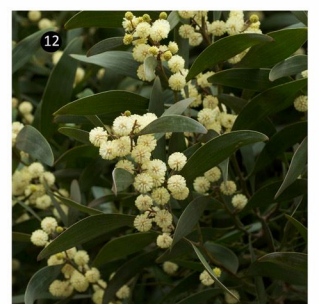
DESIGNED BY:	AJL
DESIGN CHECK:	-
DRAWN BY:	AGS
DRAFT CHECK:	-
APPROVED BY:	AJL

CLIENT: **TOLL GROUP**

PROJECT: **TRANSPORT HUB REDEVELOPMENT**

ADDRESS: **35-51 DOWLING STREET, LAUNCESTON**

DRAWING: TRUCK WASH & RE-FUELING STATION ELEVATIONS AND SECTION
SCALE (AT A1 DRAWING SIZE): 1:100
PROJECT No: 15.196 DWG No: A460 REV No: C

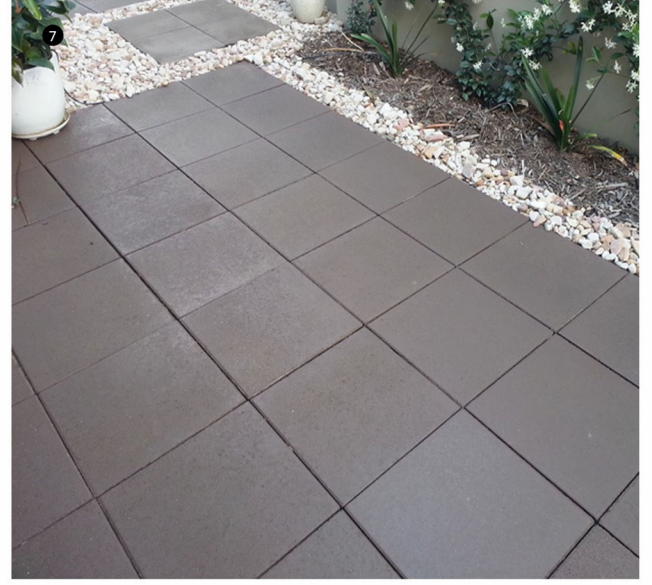
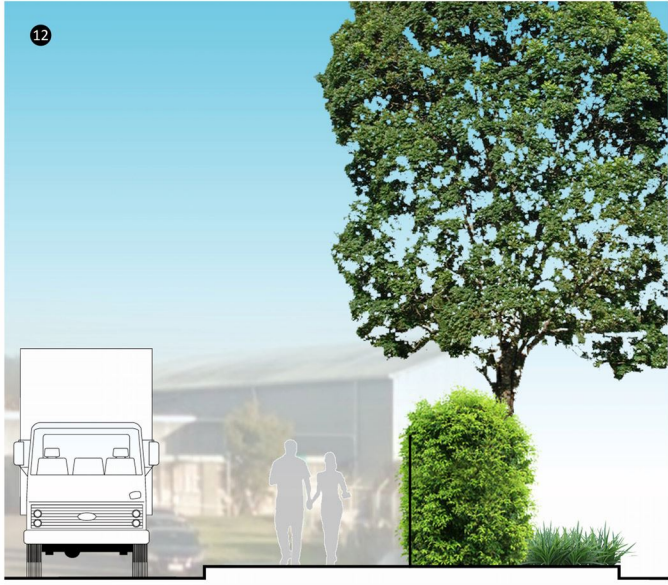


LEGEND

- 1 Existing open grassed areas to be retained.
- 2 Existing street trees to be retained.
- 3 Landscape planting buffer to provide visual amenity. Planting shall consist of colourful shrubs, tussocks and groundcovers.
- 4 Open lawn area within the landscape area for staff and visitors.
- 5 Undercover outdoor staff area.
- 6 1800mm (h) Man-proof perimeter fence provides security to the facility.
- 7 Paved courtyard with planting and white slat screen to provide privacy for staff and visiting delegates.
- 8 View garden for Boardroom 3.
- 9 Shade trees and landscape planting buffer along Broadland Street fronting the building to provide visual interest and screening.
- 10 Feature trees highlight the corner address and visitor/staff entry points.
- 11 Trees with in the car park area to provide shade and visual amenity. Car park boundary planting shall consist of low hedging and tussock species.
- 12 Landscape buffer between the car park entry and the truck exist shall consist of Australian native trees, medium size shrubs, tussocks and groundcovers to provide visual amenity and screening along Broadland Street.
- 13 Adjoining parkland with recent revegetation works between the playing field and the adjoining developments.

PROPOSED PLANT SPECIES

BOTANICAL NAME	COMMON NAME
Trees	
<i>Acacia melanoxylo</i>	Blackwood
<i>Acer rubrum</i> var.	October Glory
<i>Fraxinus excelsior</i>	Aurea
<i>Malus tschonoski</i>	Tschonoski
<i>Prunus</i> syn. <i>Kanzan</i>	Sekiyama
<i>Pyrus calleryana</i>	Fronzam Frontier
Shrubs	
<i>Abelia grandiflora</i> var.	Shorty
<i>Buxus sempervirens</i>	English Box
<i>Callistemon pallidus</i>	Leomon Bottlebrush
<i>Crocea exalata</i>	White Star
<i>Leptospermum brownii</i> nana	Dwarf red Tea-tree
<i>Nandina domestica</i>	Sacret Bamboo
<i>Nandina</i> var. <i>Flirt</i>	Flirt
<i>Viburnum oborratissimum</i>	Awabuki
Tussocks	
<i>Dianella</i> var. <i>Silver Streak</i>	Silver Streak
<i>Liriope</i> var. <i>Evergreen Giant</i>	Evergreen Giant
<i>Lomandra</i> var. <i>Lime Tuff</i>	Lime Tuff
Groundcovers	
<i>Banksia</i> var. <i>Birthday Candles</i>	Birthday Candles
<i>Grevillea</i> var. <i>Mt Tamboritha</i>	Mt Tamboritha
<i>Hibbertia obtusifolia</i>	Grey Guinea Flower



TRANSPORT HUB REDEVELOPMENT

35-51 Dowling Street Launceston Tasmania

Landscape Concept Plan

0 5 10m
 27 April 2016
 Issue B

