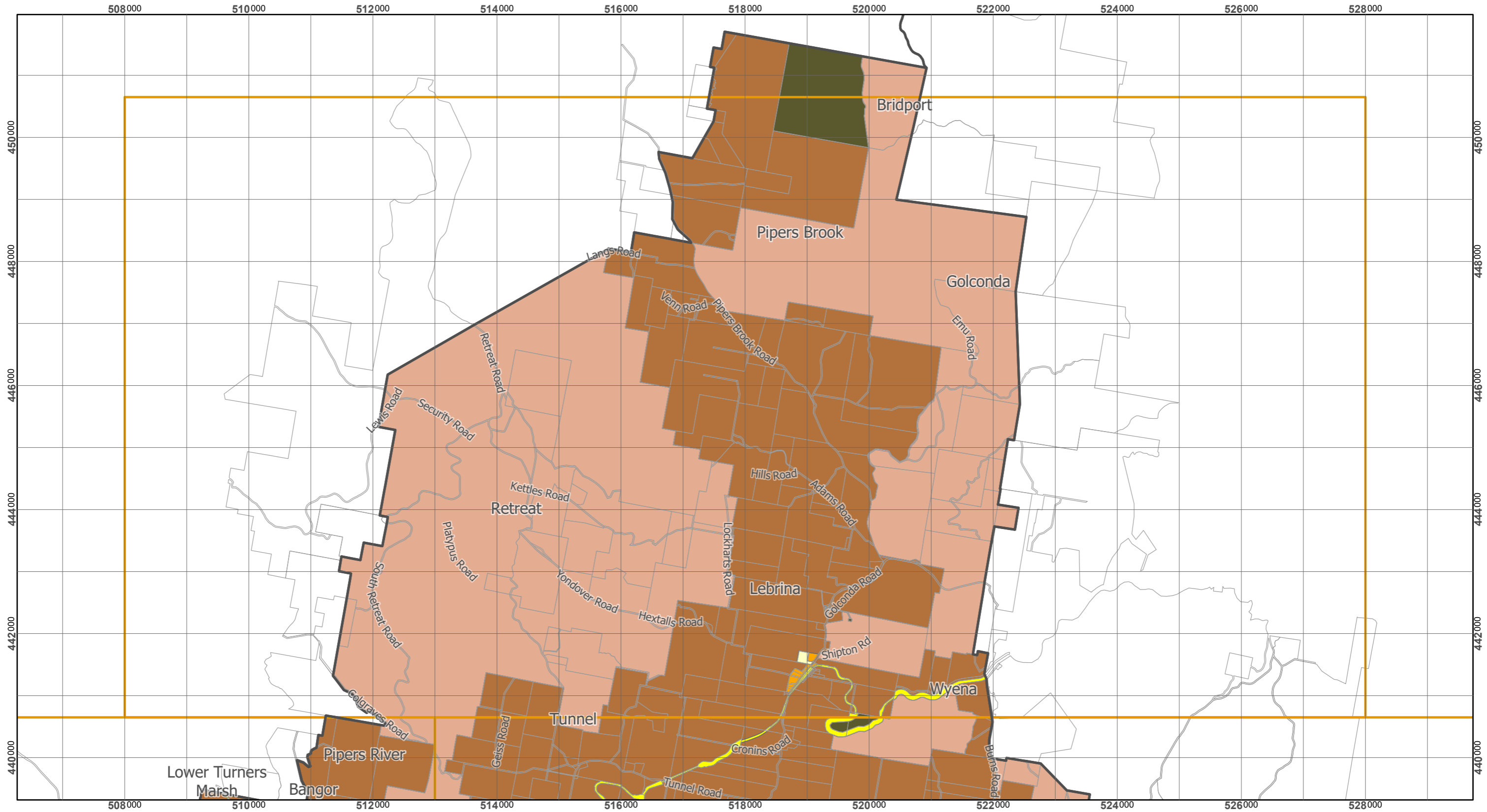


# Tasmanian Planning Scheme - Launceston LPS: Zones

Council Agenda - 12 December 2019 - Agenda Item 15.1  
Attachment 2 - Revised Rural and Agricultural Zone Maps



Legend			
	General Residential		Local Business
	Inner Residential		General Business
	Low Density Residential		Central Business
	Rural Living		Commercial
	Village		Light Industrial
	Urban Mixed Use		General Industrial
	Rural		Utilities
	Agriculture		Community Purpose
	Landscape Conservation		Recreation
	Environmental Management		Open Space
	Major Tourism		Future Urban
	Port and Marine		Particular Purpose

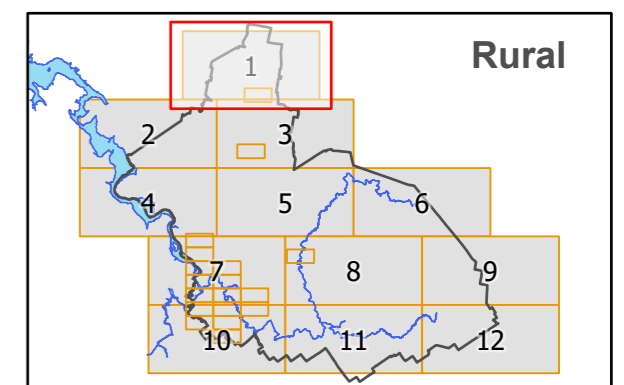
## Map 1 of 12 (Rural)



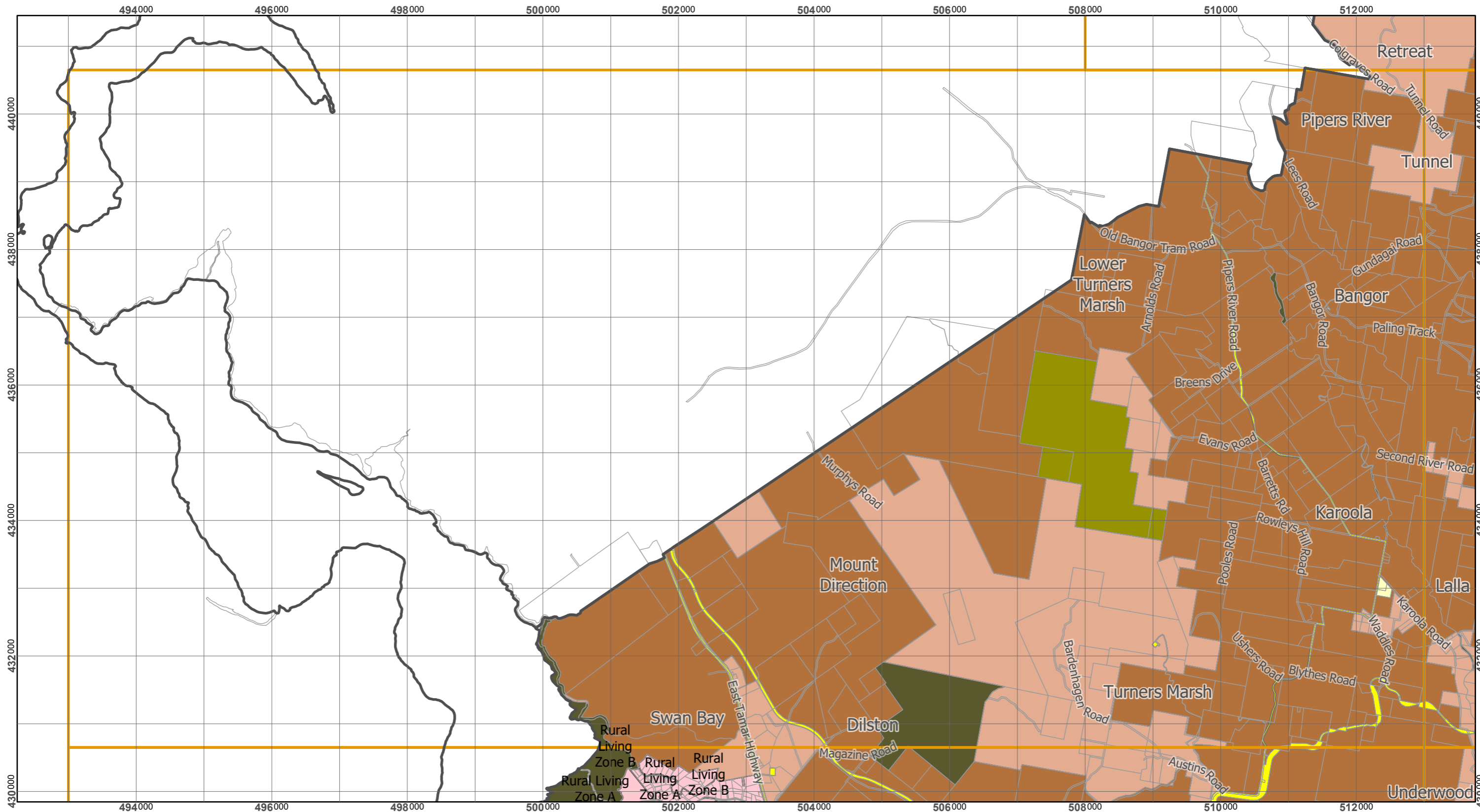
Scale at A3 : 1:60,000

Coordinate System : GDA 94 MGA Zone 55  
Zone data from Launceston City Council  
Base Topographic data from LIST ©State of Tasmania

Print date : 2/12/2019



# Tasmanian Planning Scheme - Launceston LPS: Zones



Legend			
	General Residential		Local Business
	Inner Residential		General Business
	Low Density Residential		Central Business
	Rural Living		Commercial
	Village		Light Industrial
	Urban Mixed Use		General Industrial
	Rural		Port and Marine
	Agriculture		Utilities
	Landscape Conservation		Community Purpose
	Environmental Management		Recreation
	Open Space		Future Urban
	Open Space		Particular Purpose

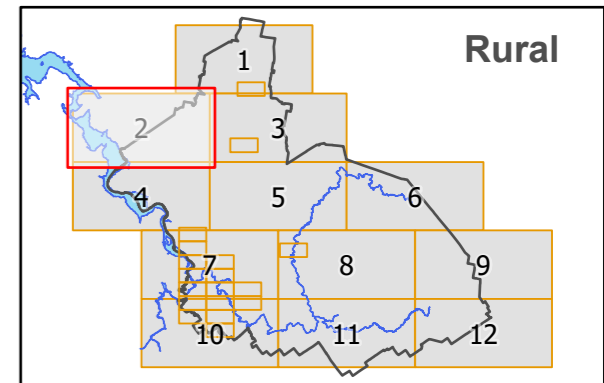
## Map 2 of 12 (Rural)



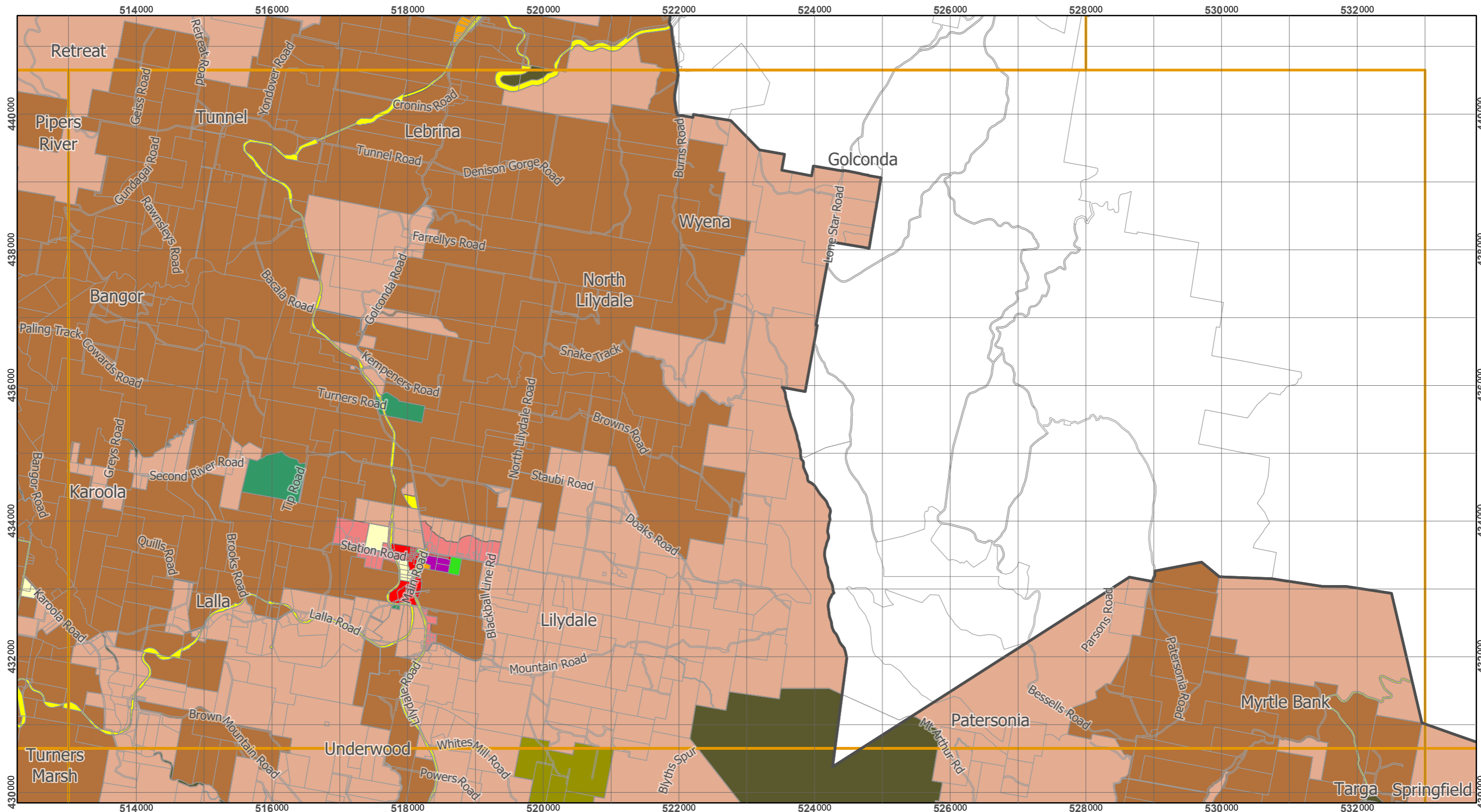
Scale at A3 : 1:55,000

Coordinate System : GDA 94 MGA Zone 55  
 Zone data from Launceston City Council  
 Base Topographic data from LIST ©State of Tasmania

Print date : 2/12/2019



# Tasmanian Planning Scheme - Launceston LPS: Zones



Legend			
	General Residential		Local Business
	Inner Residential		General Business
	Low Density Residential		Central Business
	Rural Living		Commercial
	Village		Light Industrial
	Urban Mixed Use		General Industrial
	Rural		Landscape Conservation
	Agriculture		Environmental Management
	Utilities		Port and Marine
	Community Purpose		Future Urban
	Recreation		Particular Purpose
	Open Space		

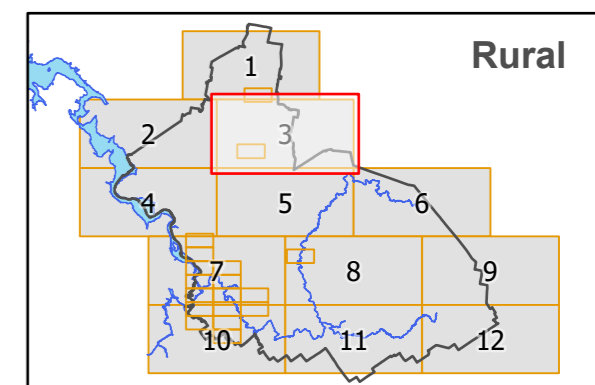
## Map 3 of 12 (Rural)



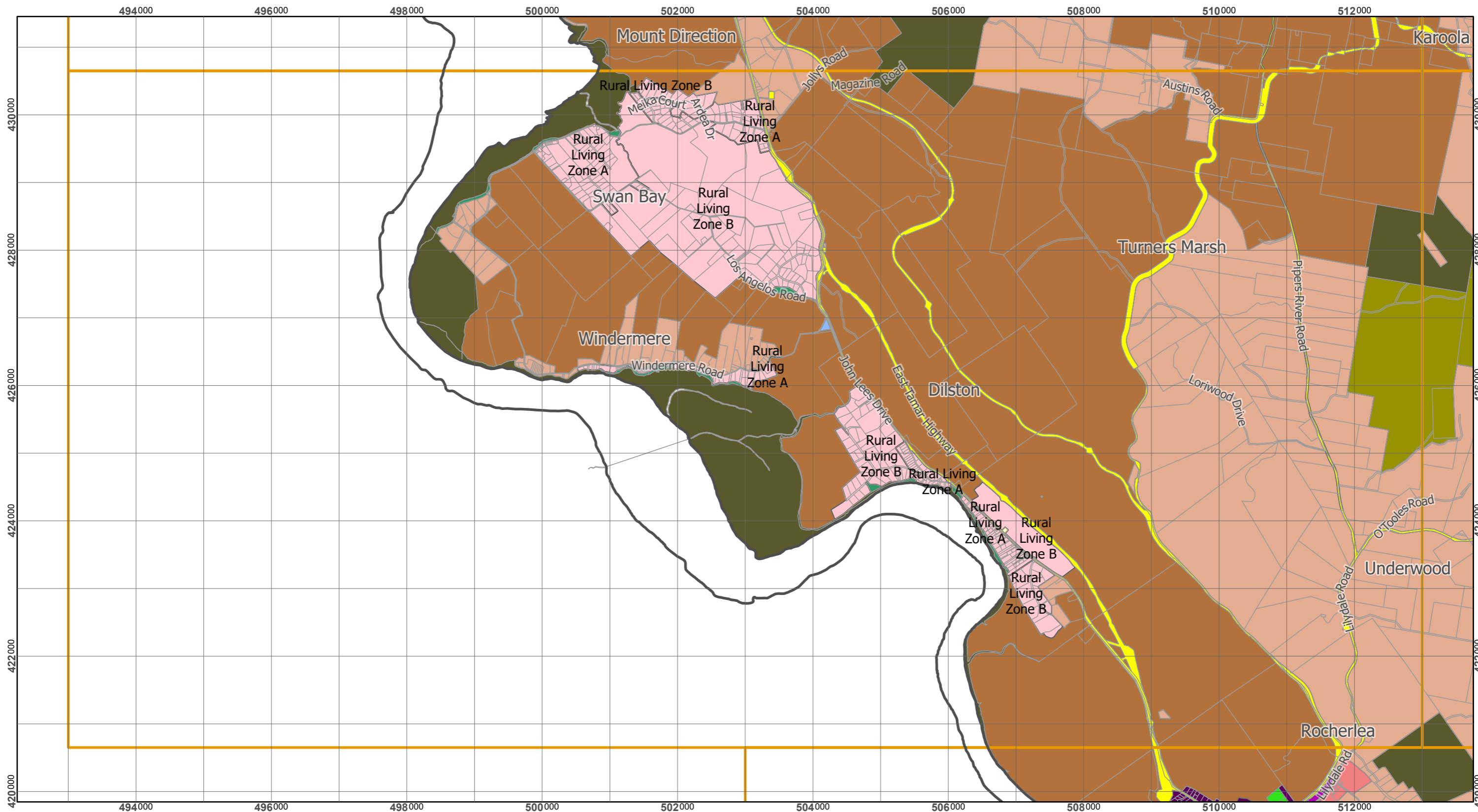
Scale at A3 : 1:55,000

Coordinate System : GDA 94 MGA Zone 55  
 Zone data from Launceston City Council  
 Base Topographic data from LIST ©State of Tasmania

Print date : 2/12/2019



# Tasmanian Planning Scheme - Launceston LPS: Zones



Legend			
	General Residential		Local Business
	Inner Residential		General Business
	Low Density Residential		Central Business
	Rural Living		Commercial
	Village		Light Industrial
	Urban Mixed Use		General Industrial
	Rural		Utilities
	Agriculture		Community Purpose
	Landscape Conservation		Recreation
	Environmental Management		Open Space
	Major Tourism		Future Urban
	Port and Marine		Particular Purpose

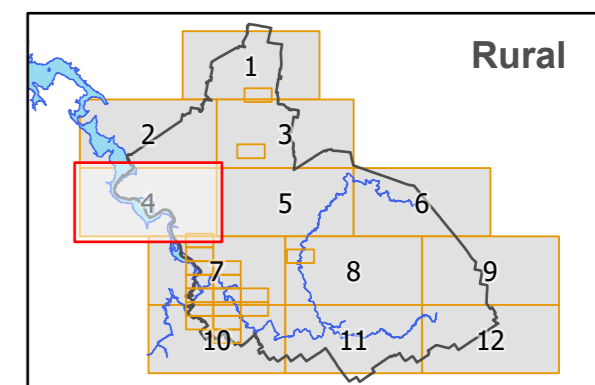
## Map 4 of 12 (Rural)



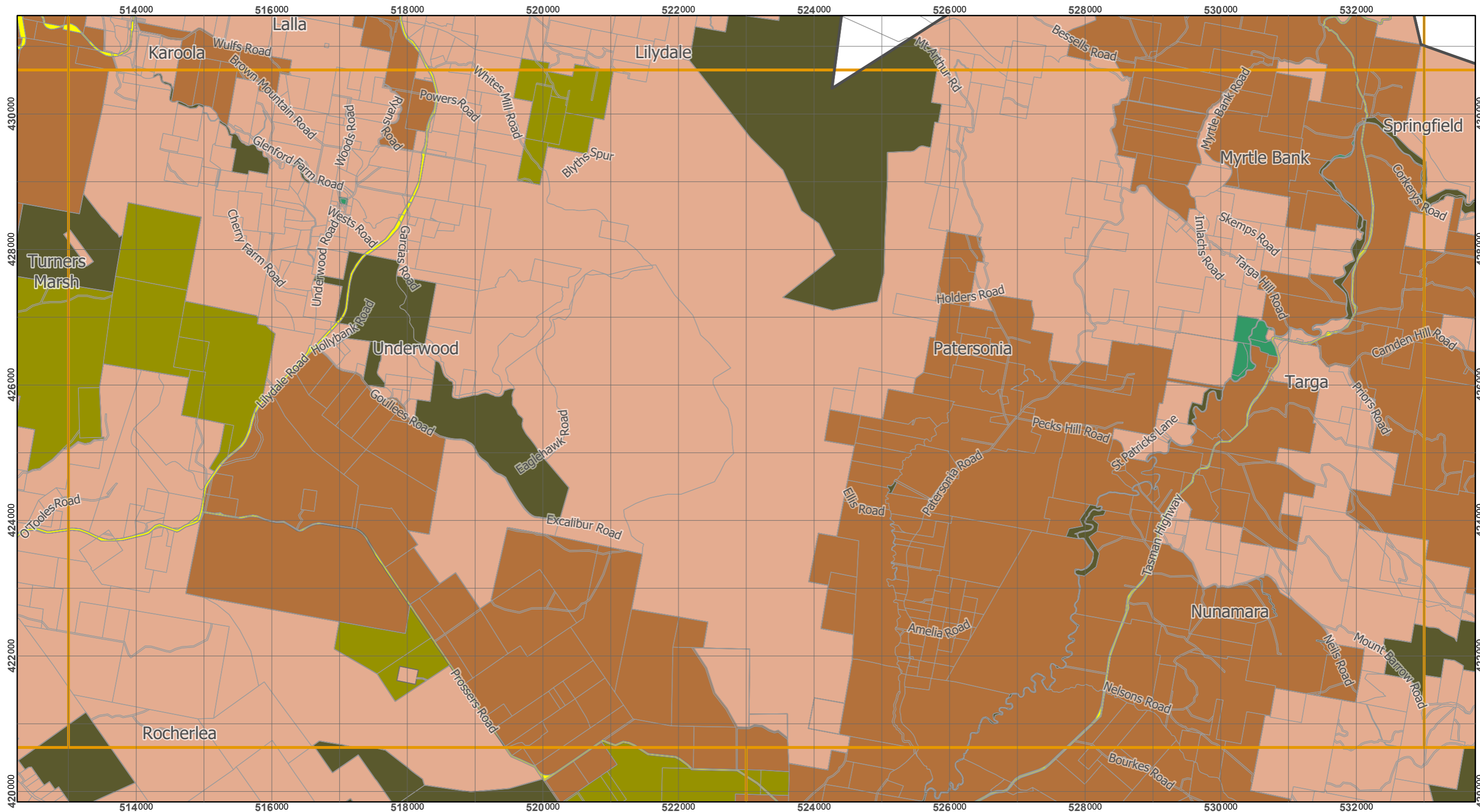
Scale at A3 : 1:55,000

Coordinate System : GDA 94 MGA Zone 55  
 Zone data from Launceston City Council  
 Base Topographic data from LIST ©State of Tasmania

Print date : 2/12/2019



# Tasmanian Planning Scheme - Launceston LPS: Zones



Legend			
	General Residential		Local Business
	Inner Residential		General Business
	Low Density Residential		Central Business
	Rural Living		Commercial
	Village		Light Industrial
	Urban Mixed Use		General Industrial
	Rural		Utilities
	Agriculture		Community Purpose
	Landscape Conservation		Recreation
	Environmental Management		Open Space
	Major Tourism		Future Urban
	Port and Marine		Particular Purpose

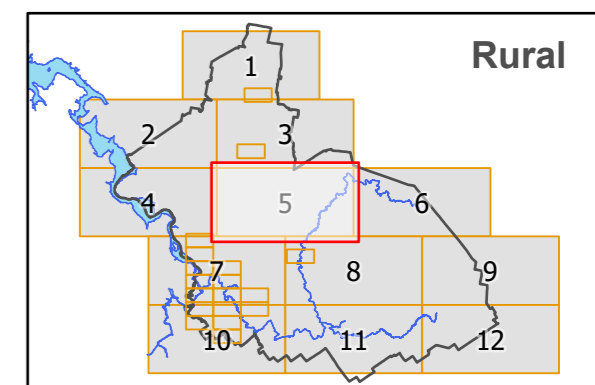
## Map 5 of 12 (Rural)



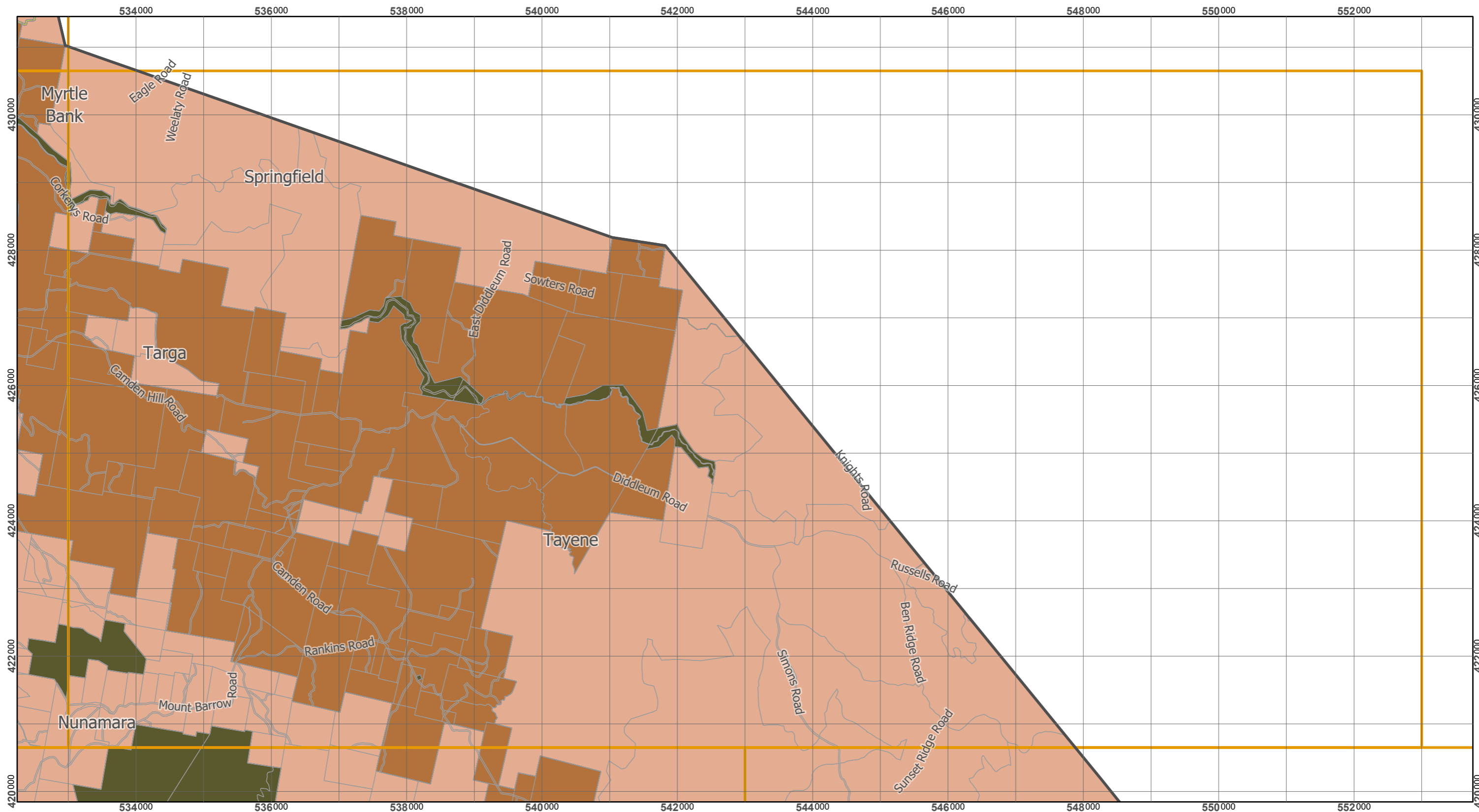
Scale at A3 : 1:55,000

Coordinate System : GDA 94 MGA Zone 55  
 Zone data from Launceston City Council  
 Base Topographic data from LIST ©State of Tasmania

Print date : 2/12/2019



# Tasmanian Planning Scheme - Launceston LPS: Zones



Legend			
<span style="color: red;">■</span> General Residential	<span style="color: lightblue;">■</span> Local Business	<span style="color: peachpuff;">■</span> Rural	<span style="color: yellow;">■</span> Utilities
<span style="color: darkred;">■</span> Inner Residential	<span style="color: blue;">■</span> General Business	<span style="color: brown;">■</span> Agriculture	<span style="color: yellowgreen;">■</span> Community Purpose
<span style="color: lightcoral;">■</span> Low Density Residential	<span style="color: darkblue;">■</span> Central Business	<span style="color: olive;">■</span> Landscape Conservation	<span style="color: green;">■</span> Recreation
<span style="color: pink;">■</span> Rural Living	<span style="color: purple;">■</span> Commercial	<span style="color: darkolivegreen;">■</span> Environmental Management	<span style="color: darkgreen;">■</span> Open Space
<span style="color: orange;">■</span> Village	<span style="color: magenta;">■</span> Light Industrial	<span style="color: grey;">■</span> Major Tourism	<span style="color: orange;">■</span> Future Urban
<span style="color: lightgrey;">■</span> Urban Mixed Use	<span style="color: darkpurple;">■</span> General Industrial	<span style="color: cyan;">■</span> Port and Marine	<span style="color: magenta;">■</span> Particular Purpose

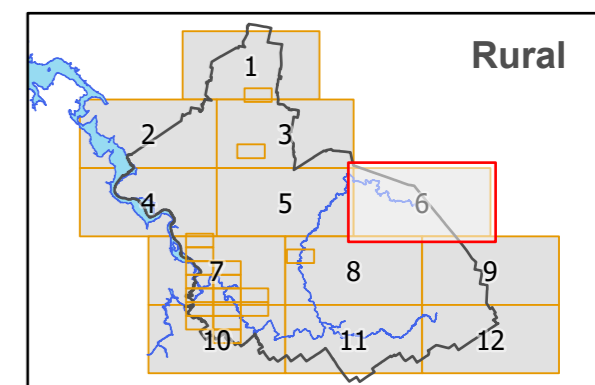
Map 6 of 12 (Rural)



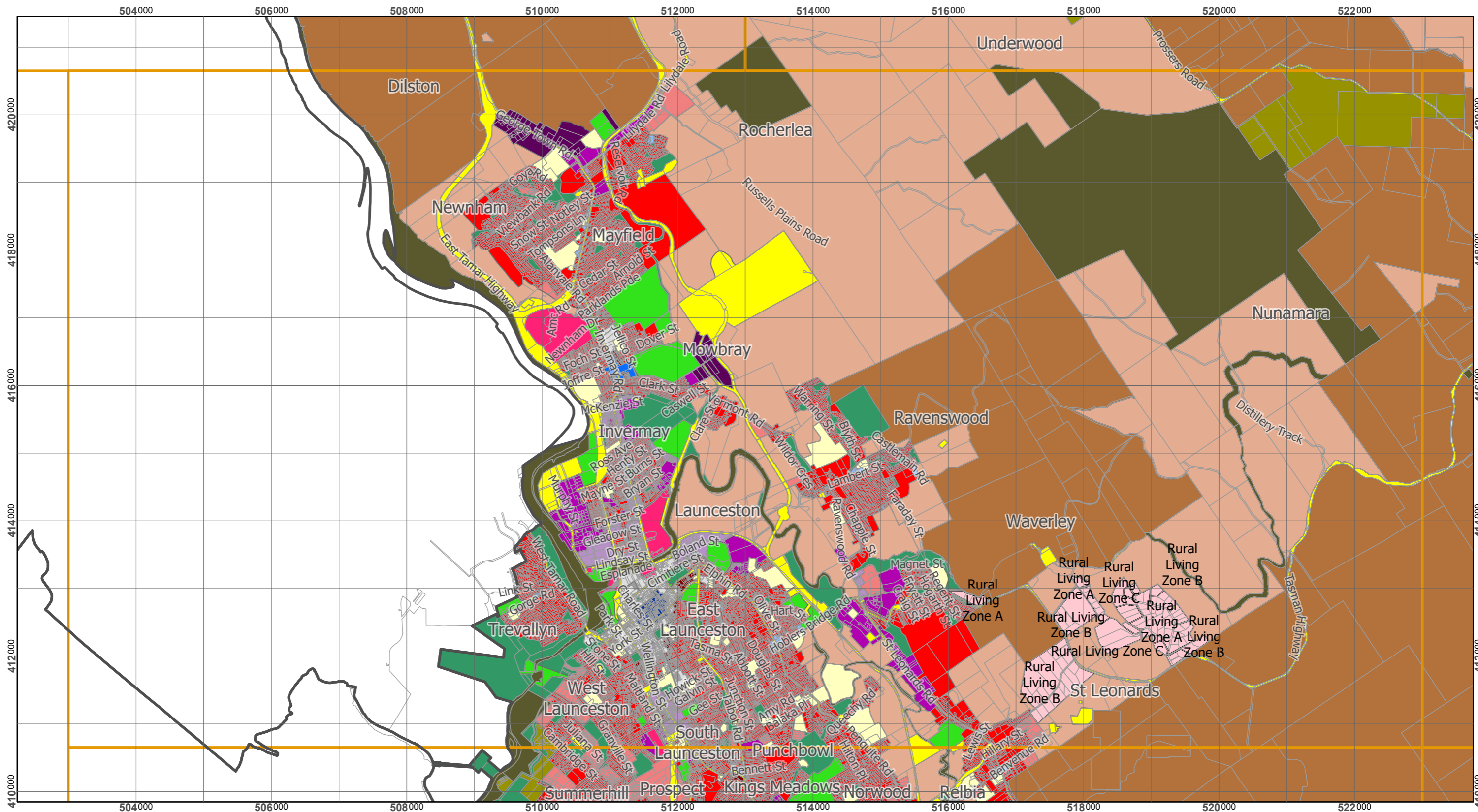
Scale at A3 : 1:55,000

Coordinate System : GDA 94 MGA Zone 55  
 Zone data from Launceston City Council  
 Base Topographic data from LIST ©State of Tasmania

Print date : 2/12/2019



# Tasmanian Planning Scheme - Launceston LPS: Zones



Legend			
<span style="color: red;">■</span> General Residential	<span style="color: lightblue;">■</span> Local Business	<span style="color: lightbrown;">■</span> Rural	<span style="color: yellow;">■</span> Utilities
<span style="color: darkred;">■</span> Inner Residential	<span style="color: blue;">■</span> General Business	<span style="color: brown;">■</span> Agriculture	<span style="color: lightyellow;">■</span> Community Purpose
<span style="color: pink;">■</span> Low Density Residential	<span style="color: darkblue;">■</span> Central Business	<span style="color: olive;">■</span> Landscape Conservation	<span style="color: green;">■</span> Recreation
<span style="color: lightpink;">■</span> Rural Living	<span style="color: purple;">■</span> Commercial	<span style="color: darkolivegreen;">■</span> Environmental Management	<span style="color: darkgreen;">■</span> Open Space
<span style="color: orange;">■</span> Village	<span style="color: magenta;">■</span> Light Industrial	<span style="color: grey;">■</span> Major Tourism	<span style="color: orange;">■</span> Future Urban
<span style="color: lightgrey;">■</span> Urban Mixed Use	<span style="color: darkpurple;">■</span> General Industrial	<span style="color: cyan;">■</span> Port and Marine	<span style="color: magenta;">■</span> Particular Purpose

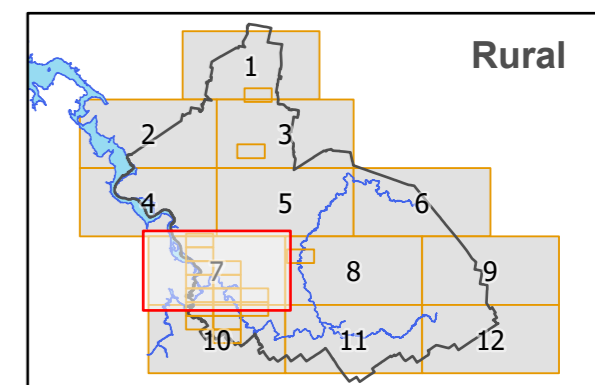
## Map 7 of 12 (Rural)



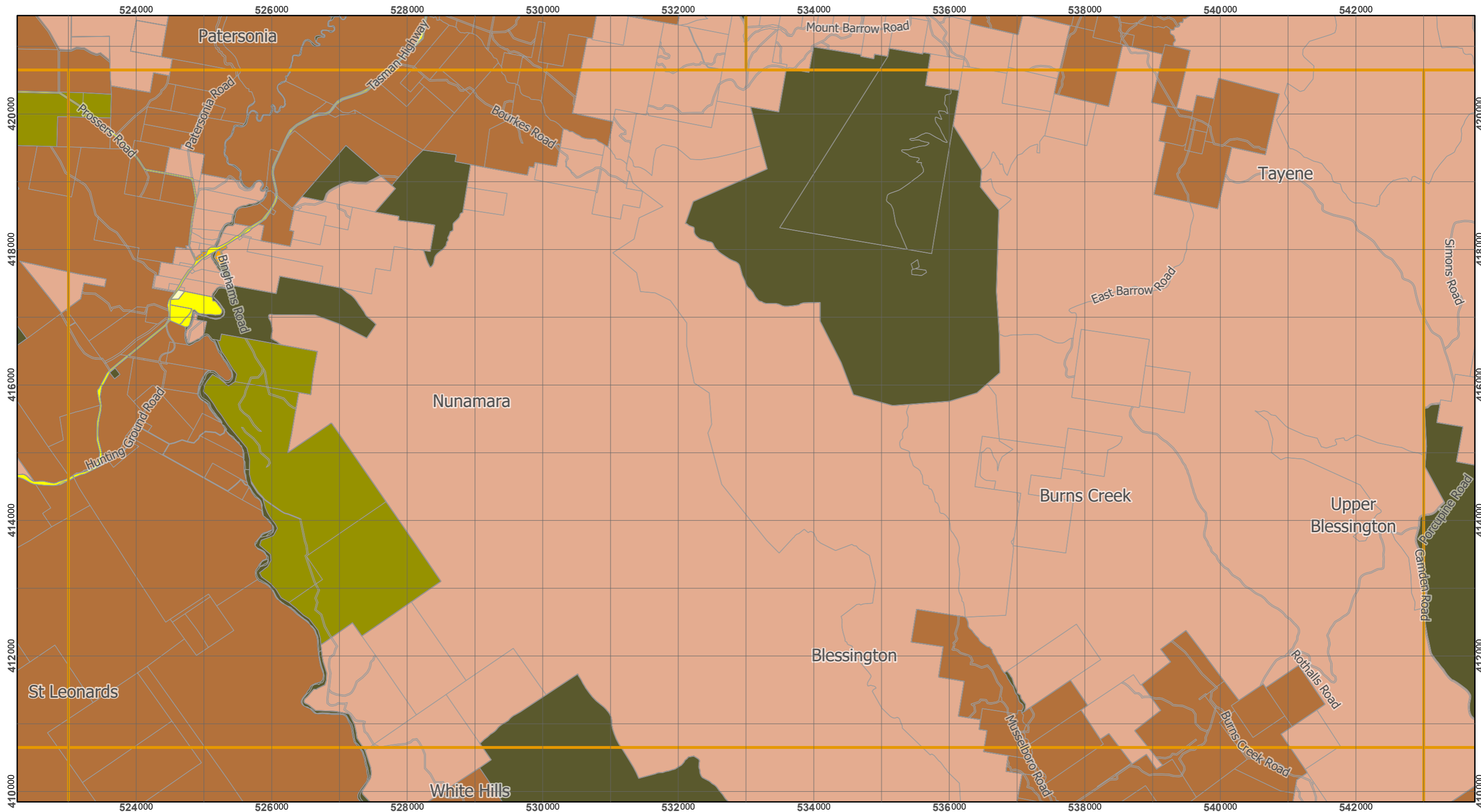
Scale at A3 : 1:55,000

Coordinate System : GDA 94 MGA Zone 55  
 Zone data from Launceston City Council  
 Base Topographic data from LIST ©State of Tasmania

Print date : 2/12/2019



# Tasmanian Planning Scheme - Launceston LPS: Zones



Legend			
<span style="color: red;">■</span> General Residential	<span style="color: lightblue;">■</span> Local Business	<span style="color: lightbrown;">■</span> Rural	<span style="color: yellow;">■</span> Utilities
<span style="color: darkred;">■</span> Inner Residential	<span style="color: blue;">■</span> General Business	<span style="color: brown;">■</span> Agriculture	<span style="color: yellowgreen;">■</span> Community Purpose
<span style="color: pink;">■</span> Low Density Residential	<span style="color: darkblue;">■</span> Central Business	<span style="color: olive;">■</span> Landscape Conservation	<span style="color: green;">■</span> Recreation
<span style="color: lightpink;">■</span> Rural Living	<span style="color: purple;">■</span> Commercial	<span style="color: darkolivegreen;">■</span> Environmental Management	<span style="color: darkgreen;">■</span> Open Space
<span style="color: orange;">■</span> Village	<span style="color: magenta;">■</span> Light Industrial	<span style="color: grey;">■</span> Major Tourism	<span style="color: orange;">■</span> Future Urban
<span style="color: lightgrey;">■</span> Urban Mixed Use	<span style="color: darkpurple;">■</span> General Industrial	<span style="color: cyan;">■</span> Port and Marine	<span style="color: magenta;">■</span> Particular Purpose

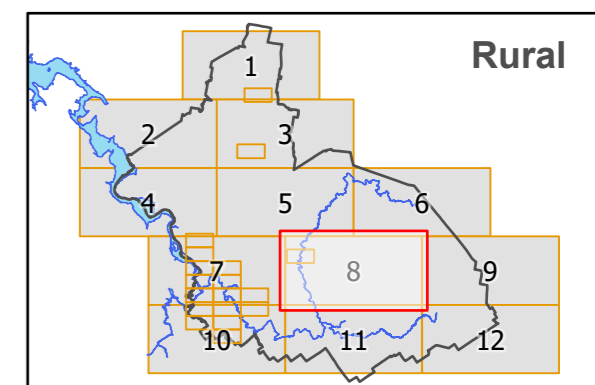
## Map 8 of 12 (Rural)



Scale at A3 : 1:55,000

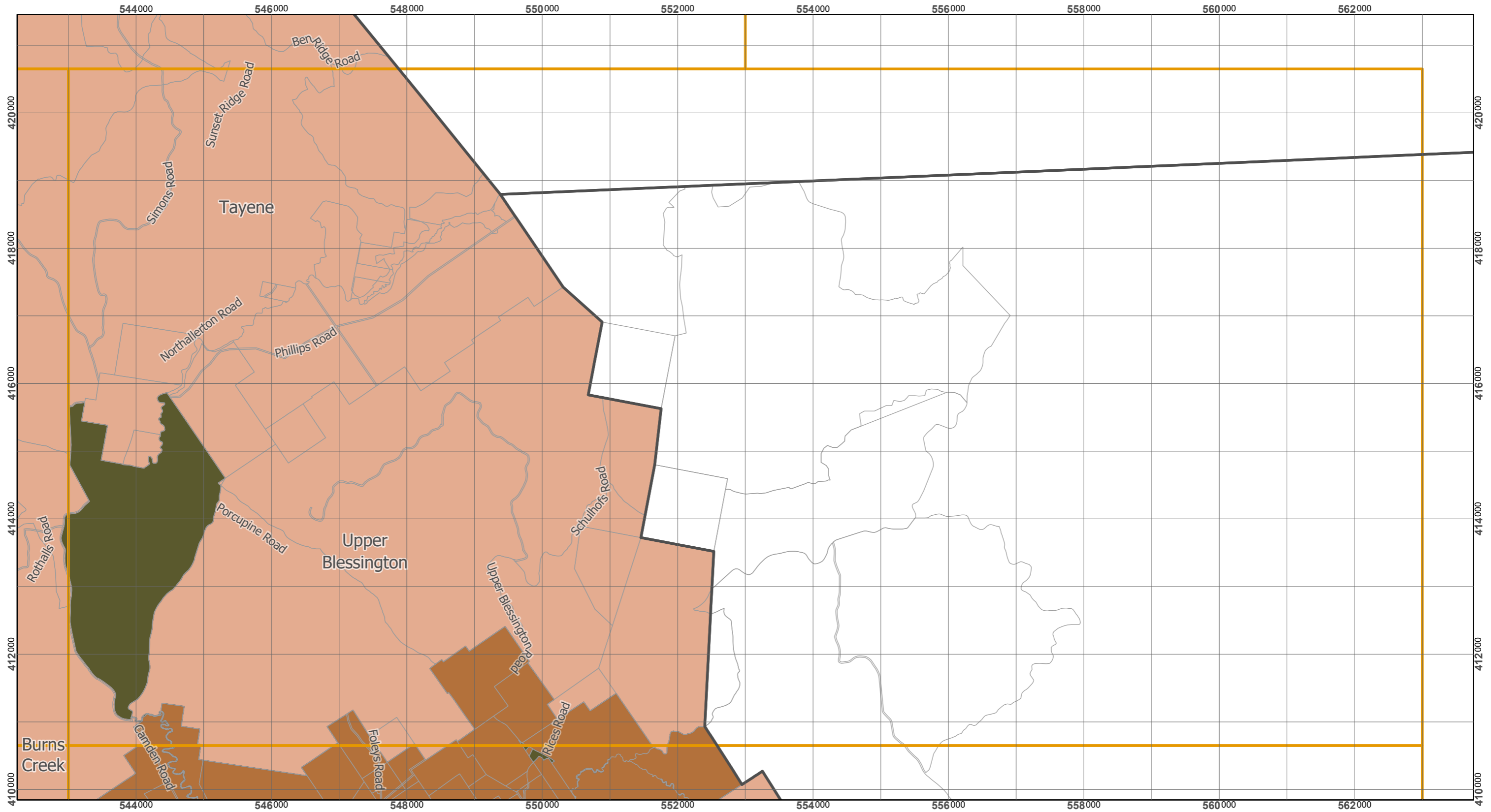
Coordinate System : GDA 94 MGA Zone 55  
Zone data from Launceston City Council  
Base Topographic data from LIST ©State of Tasmania

Print date : 2/12/2019





# Tasmanian Planning Scheme - Launceston LPS: Zones



Legend			
	General Residential		Local Business
	Inner Residential		General Business
	Low Density Residential		Central Business
	Rural Living		Commercial
	Village		Light Industrial
	Urban Mixed Use		General Industrial
	Rural		Port and Marine
	Agriculture		Utilities
	Landscape Conservation		Community Purpose
	Environmental Management		Recreation
	Major Tourism		Open Space
	Future Urban		Future Urban
	Particular Purpose		Particular Purpose

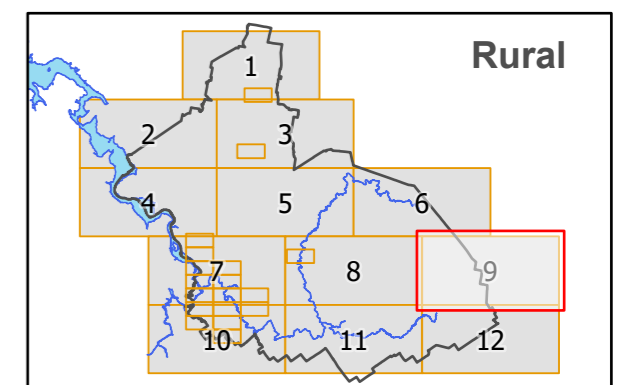
## Map 9 of 12 (Rural)



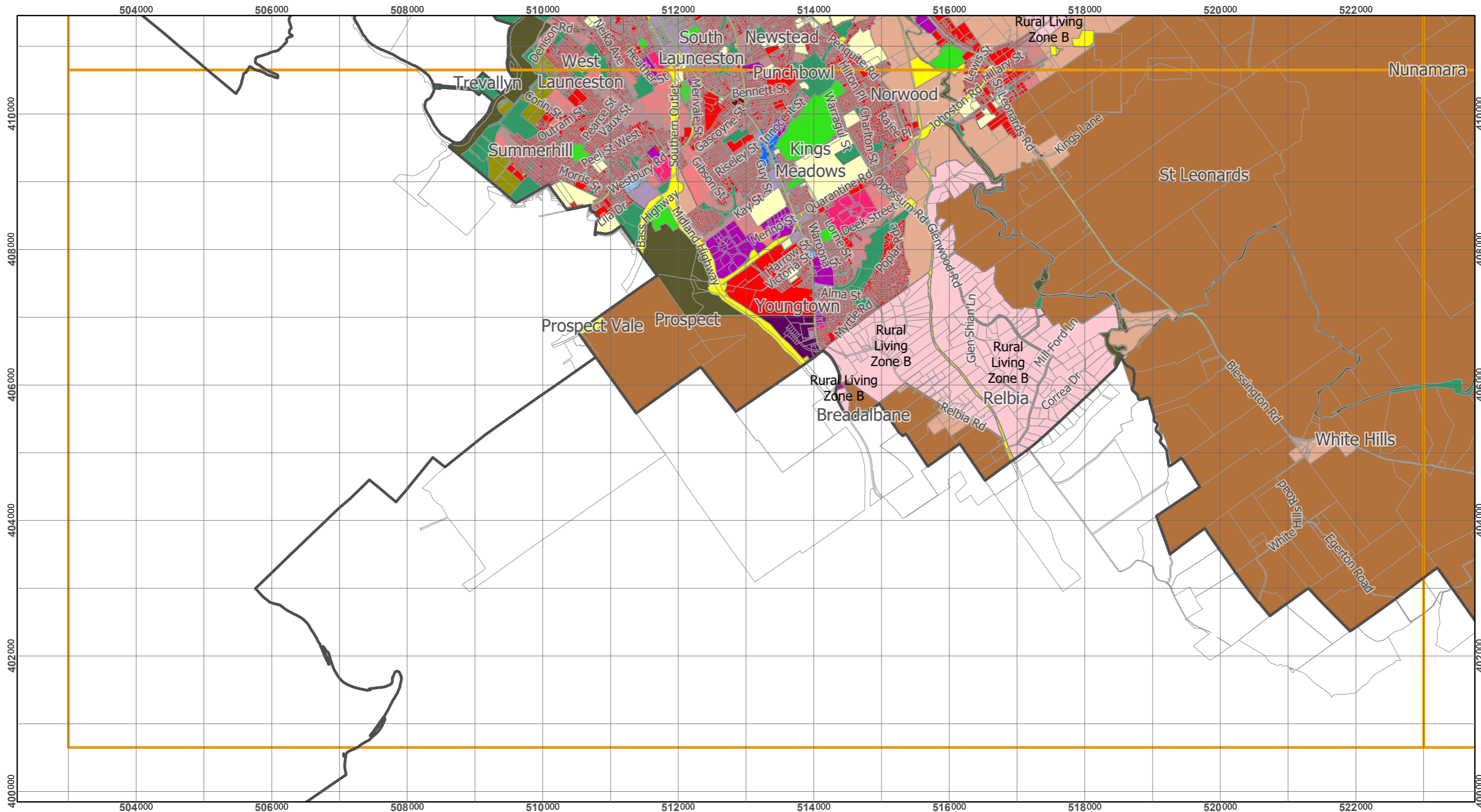
Scale at A3 : 1:55,000

Coordinate System : GDA 94 MGA Zone 55  
 Zone data from Launceston City Council  
 Base Topographic data from LIST ©State of Tasmania

Print date : 2/12/2019



# Tasmanian Planning Scheme - Launceston LPS: Zones



Legend			
	General Residential		Local Business
	Inner Residential		General Business
	Low Density Residential		Central Business
	Rural Living		Commercial
	Village		Light Industrial
	Urban Mixed Use		General Industrial
	Rural		Utilities
	Agriculture		Community Purpose
	Landscape Conservation		Recreation
	Environmental Management		Open Space
	Major Tourism		Future Urban
	Port and Marine		Particular Purpose

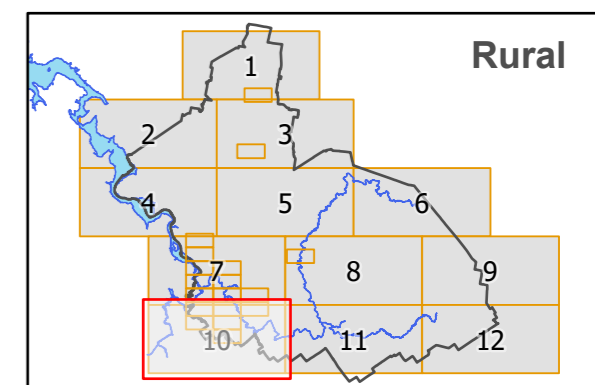
## Map 10 of 12 (Rural)



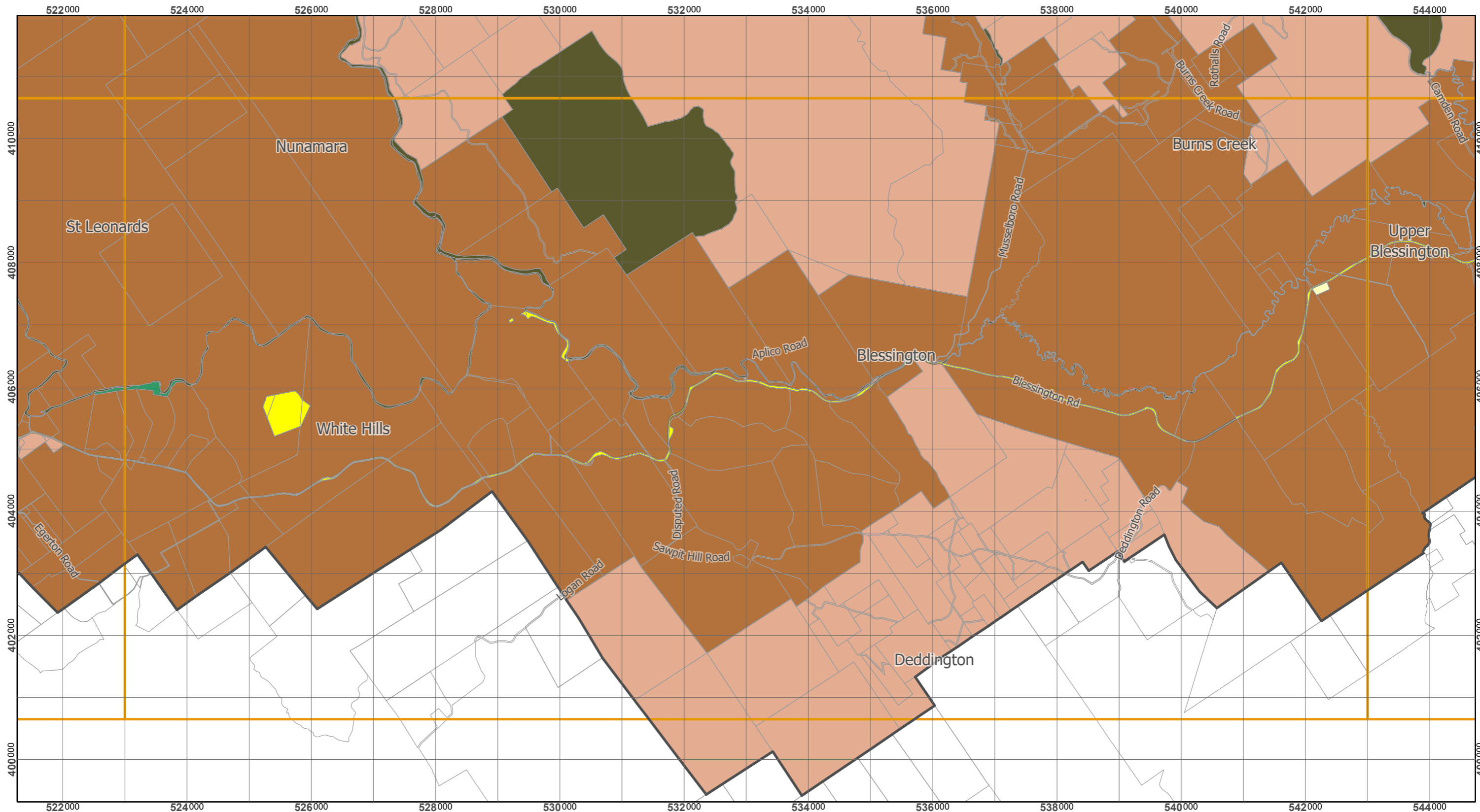
Scale at A3 : 1:55,000

Coordinate System : GDA 94 MGA Zone 55  
 Zone data from Launceston City Council  
 Base Topographic data from LIST ©State of Tasmania

Print date : 2/12/2019



# Tasmanian Planning Scheme - Launceston LPS: Zones



Legend			
	General Residential		Local Business
	Inner Residential		General Business
	Low Density Residential		Central Business
	Rural Living		Commercial
	Village		Light Industrial
	Urban Mixed Use		General Industrial
	Rural		Utilities
	Agriculture		Community Purpose
	Landscape Conservation		Recreation
	Environmental Management		Open Space
	Major Tourism		Future Urban
	Port and Marine		Particular Purpose

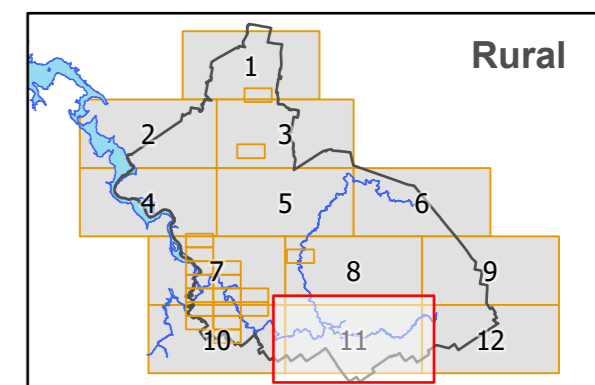
## Map 11 of 12 (Rural)



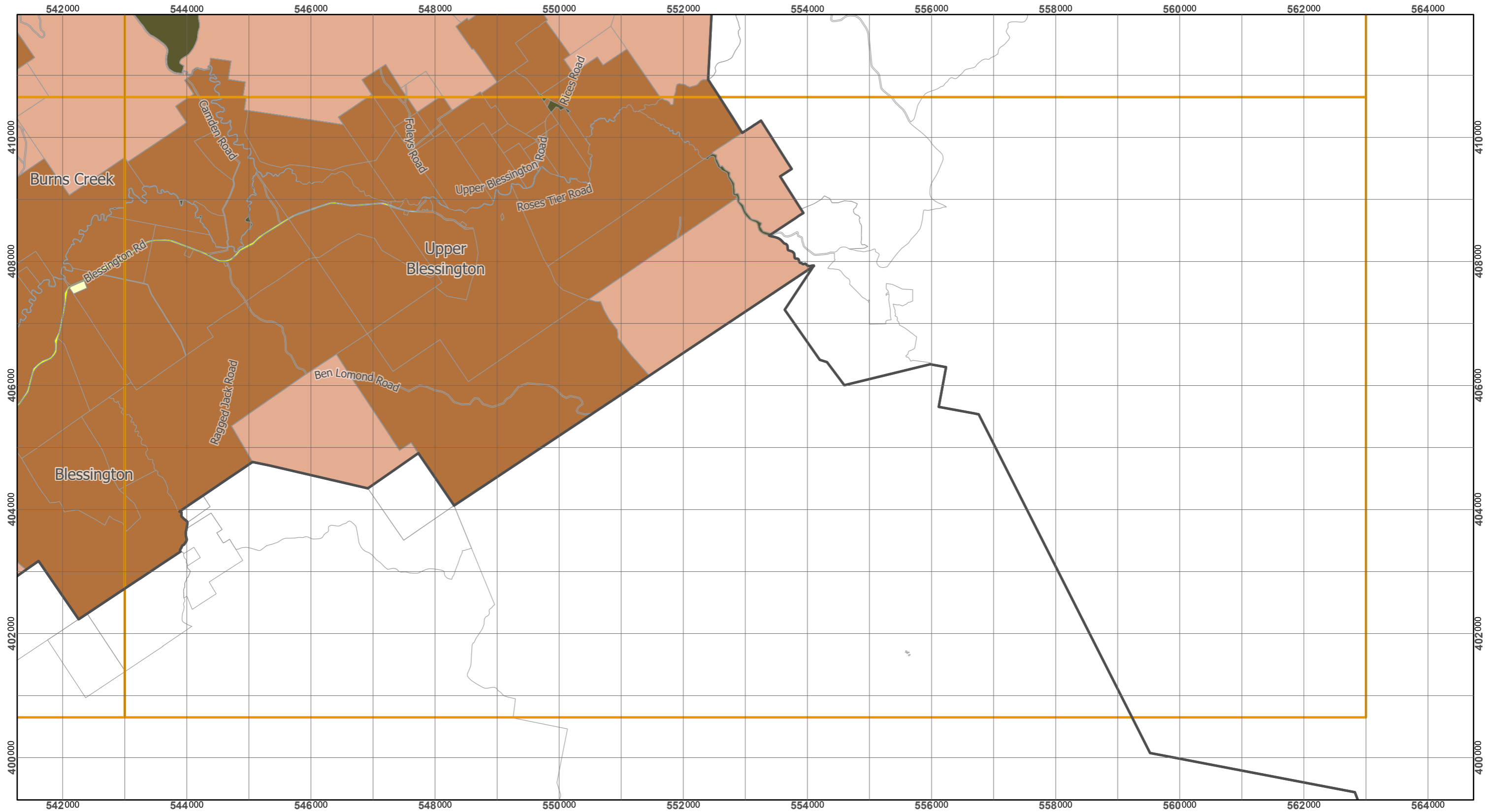
Scale at A3 : 1:60,000

Coordinate System : GDA 94 MGA Zone 55  
 Zone data from Launceston City Council  
 Base Topographic data from LIST ©State of Tasmania

Print date : 2/12/2019



# Tasmanian Planning Scheme - Launceston LPS: Zones



Legend			
	General Residential		Local Business
	Inner Residential		General Business
	Low Density Residential		Central Business
	Rural Living		Commercial
	Village		Light Industrial
	Urban Mixed Use		General Industrial
	Rural		Utilities
	Agriculture		Community Purpose
	Landscape Conservation		Recreation
	Environmental Management		Open Space
	Major Tourism		Future Urban
	Port and Marine		Particular Purpose

## Map 12 of 12 (Rural)



Scale at A3 : 1:60,000

Coordinate System : GDA 94 MGA Zone 55  
 Zone data from Launceston City Council  
 Base Topographic data from LIST ©State of Tasmania

Print date : 2/12/2019

