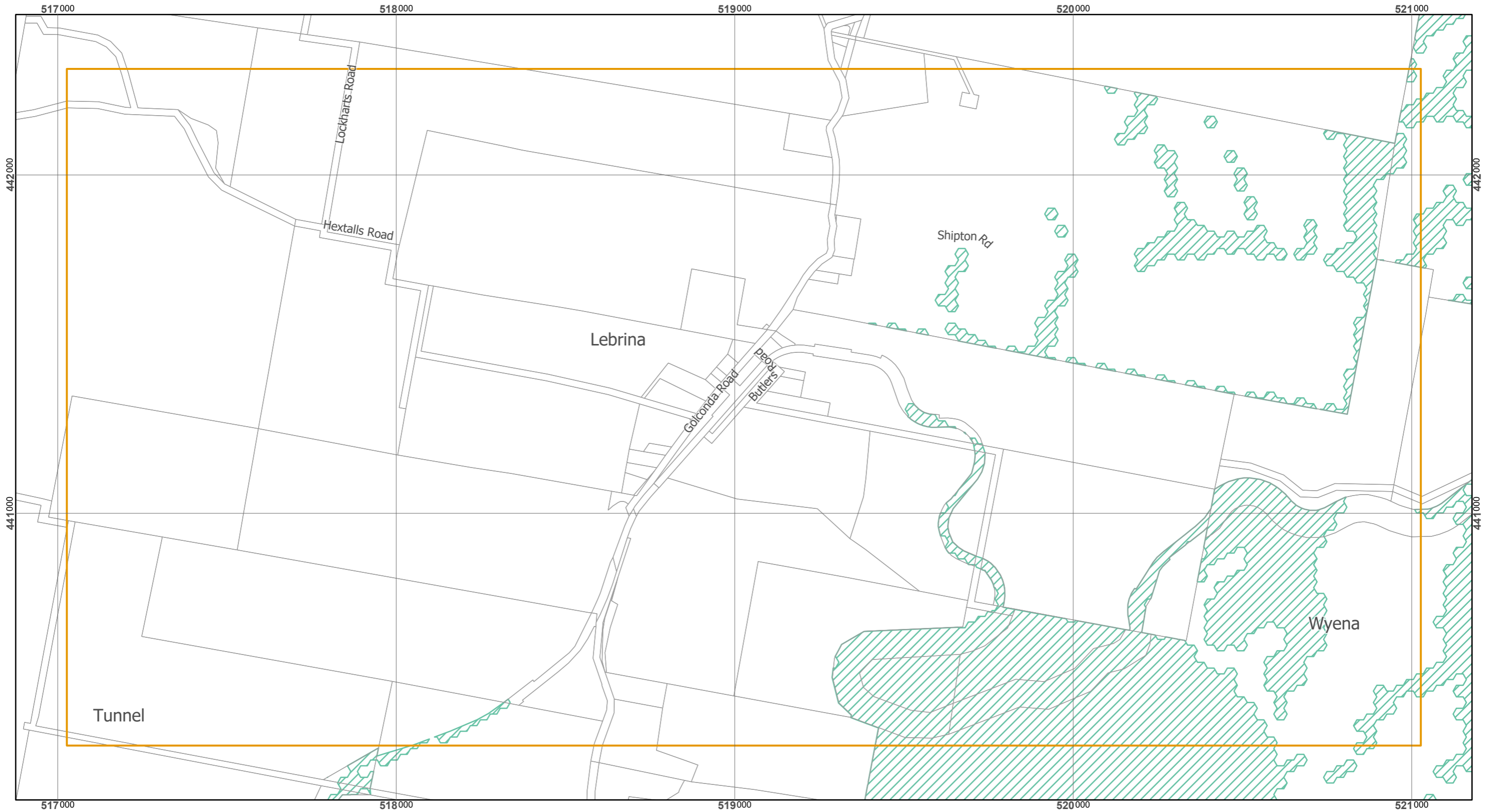


Tasmanian Planning Scheme - Launceston LPS: Natural Assets Overlay Map 2 of 2



Legend

 Priority Vegetation Area

Council Agenda - 12 December.2019 - Agenda Item 15.1 - Attachment 3
 Revised Overlays A3L 11k - Natural Assets 2 of 2 - Priority Vegetation - 2 December 2019

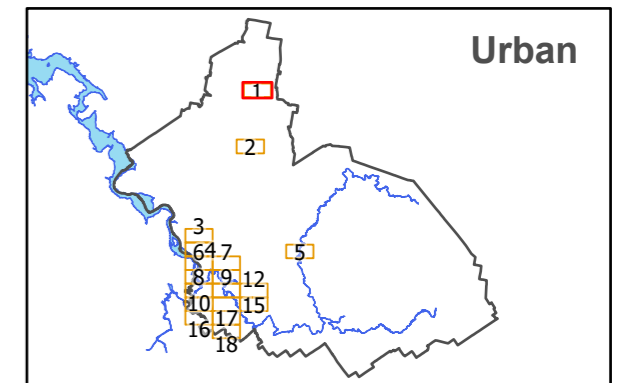
Map 1 of 18 (Urban)



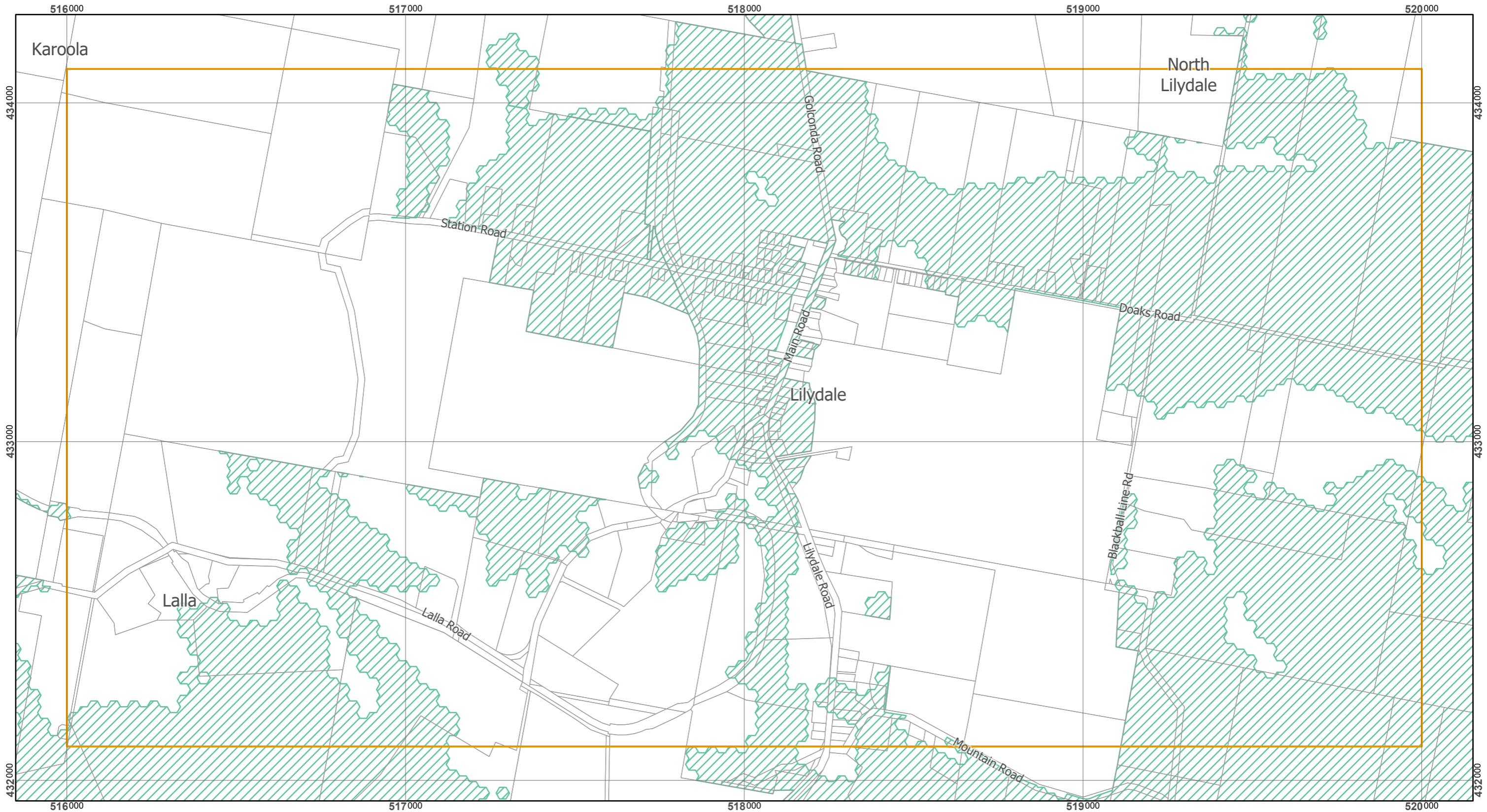
Scale at A3 : 1:11,000

Coordinate System : GDA 94 MGA Zone 55
 Zone data from Launceston City Council
 Base Topographic data from LIST ©State of Tasmania

Print date : 2/12/2019



Tasmanian Planning Scheme - Launceston LPS: Natural Assets Overlay Map 2 of 2



Legend

 Priority Vegetation Area

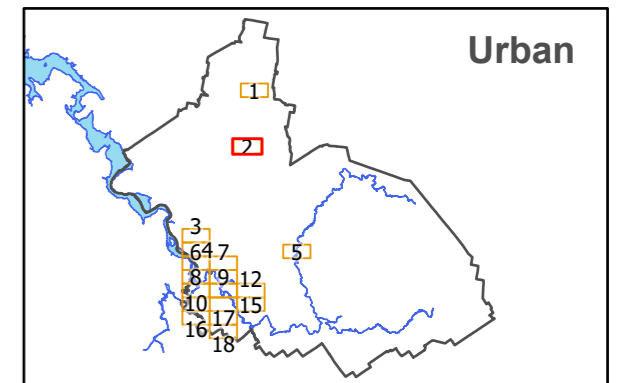
Map 2 of 18 (Urban)



Scale at A3 : 1:11,000

Coordinate System : GDA 94 MGA Zone 55
Zone data from Launceston City Council
Base Topographic data from LIST ©State of Tasmania

Print date : 2/12/2019



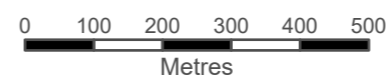
Tasmanian Planning Scheme - Launceston LPS: Natural Assets Overlay Map 2 of 2



Legend

 Priority Vegetation Area

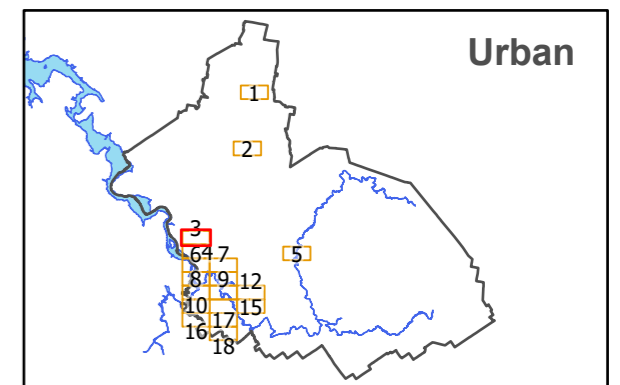
Map 3 of 18 (Urban)



Scale at A3 : 1:11,000

Coordinate System : GDA 94 MGA Zone 55
 Zone data from Launceston City Council
 Base Topographic data from LIST ©State of Tasmania

Print date : 2/12/2019



Tasmanian Planning Scheme - Launceston LPS: Natural Assets Overlay Map 2 of 2



Legend

 Priority Vegetation Area

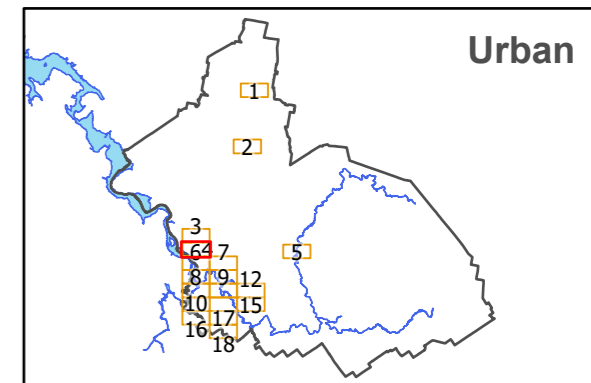
Map 4 of 18 (Urban)



Scale at A3 : 1:11,000

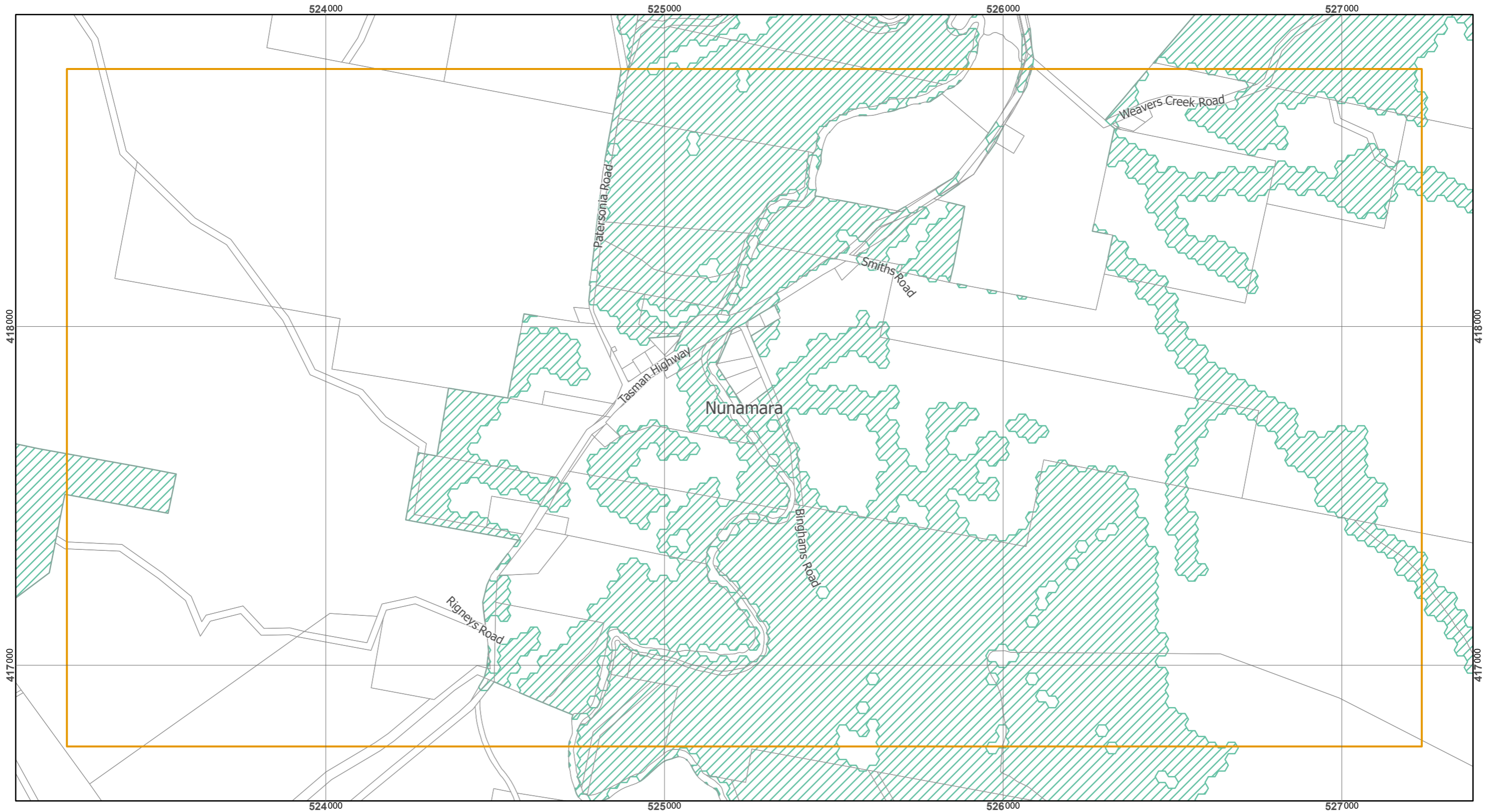
Coordinate System : GDA 94 MGA Zone 55
 Zone data from Launceston City Council
 Base Topographic data from LIST ©State of Tasmania

Print date : 2/12/2019



Urban

Tasmanian Planning Scheme - Launceston LPS: Natural Assets Overlay Map 2 of 2



Legend

 Priority Vegetation Area

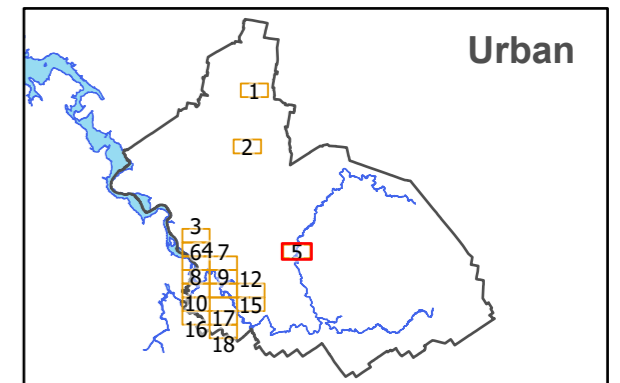
Map 5 of 18 (Urban)



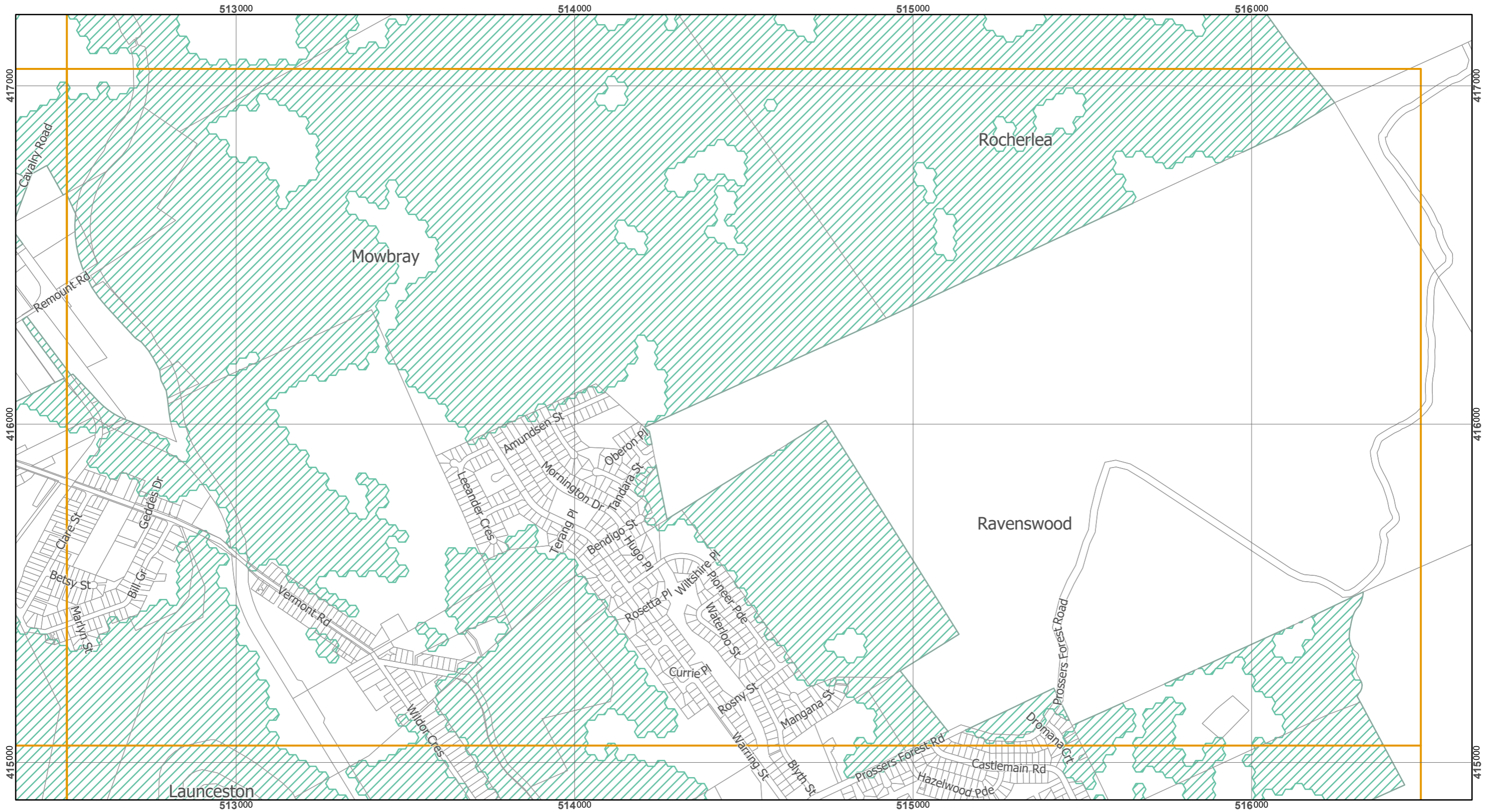
Scale at A3 : 1:11,000

Coordinate System : GDA 94 MGA Zone 55
Zone data from Launceston City Council
Base Topographic data from LIST ©State of Tasmania

Print date : 2/12/2019



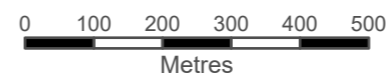
Tasmanian Planning Scheme - Launceston LPS: Natural Assets Overlay Map 2 of 2



Legend

 Priority Vegetation Area

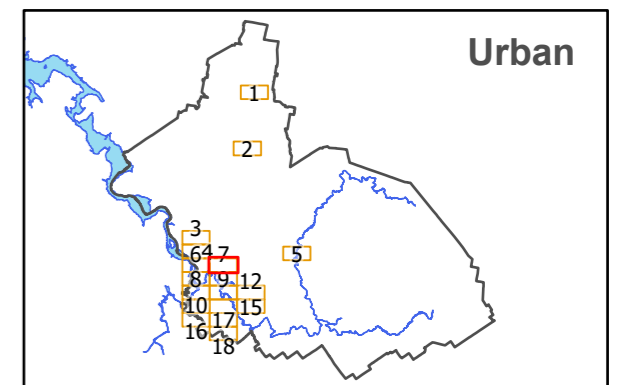
Map 7 of 18 (Urban)



Scale at A3 : 1:11,000

Coordinate System : GDA 94 MGA Zone 55
 Zone data from Launceston City Council
 Base Topographic data from LIST ©State of Tasmania

Print date : 2/12/2019



Tasmanian Planning Scheme - Launceston LPS: Natural Assets Overlay Map 2 of 2



Legend

 Priority Vegetation Area

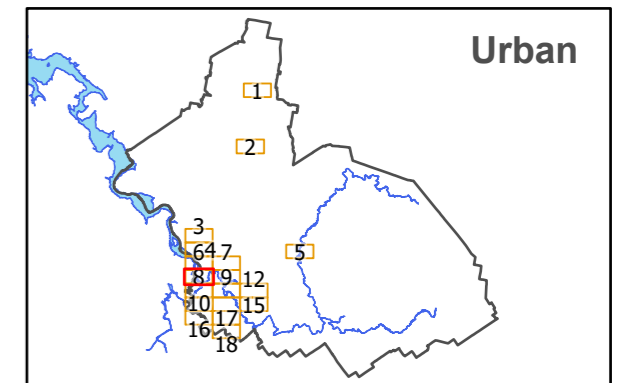
Map 8 of 18 (Urban)



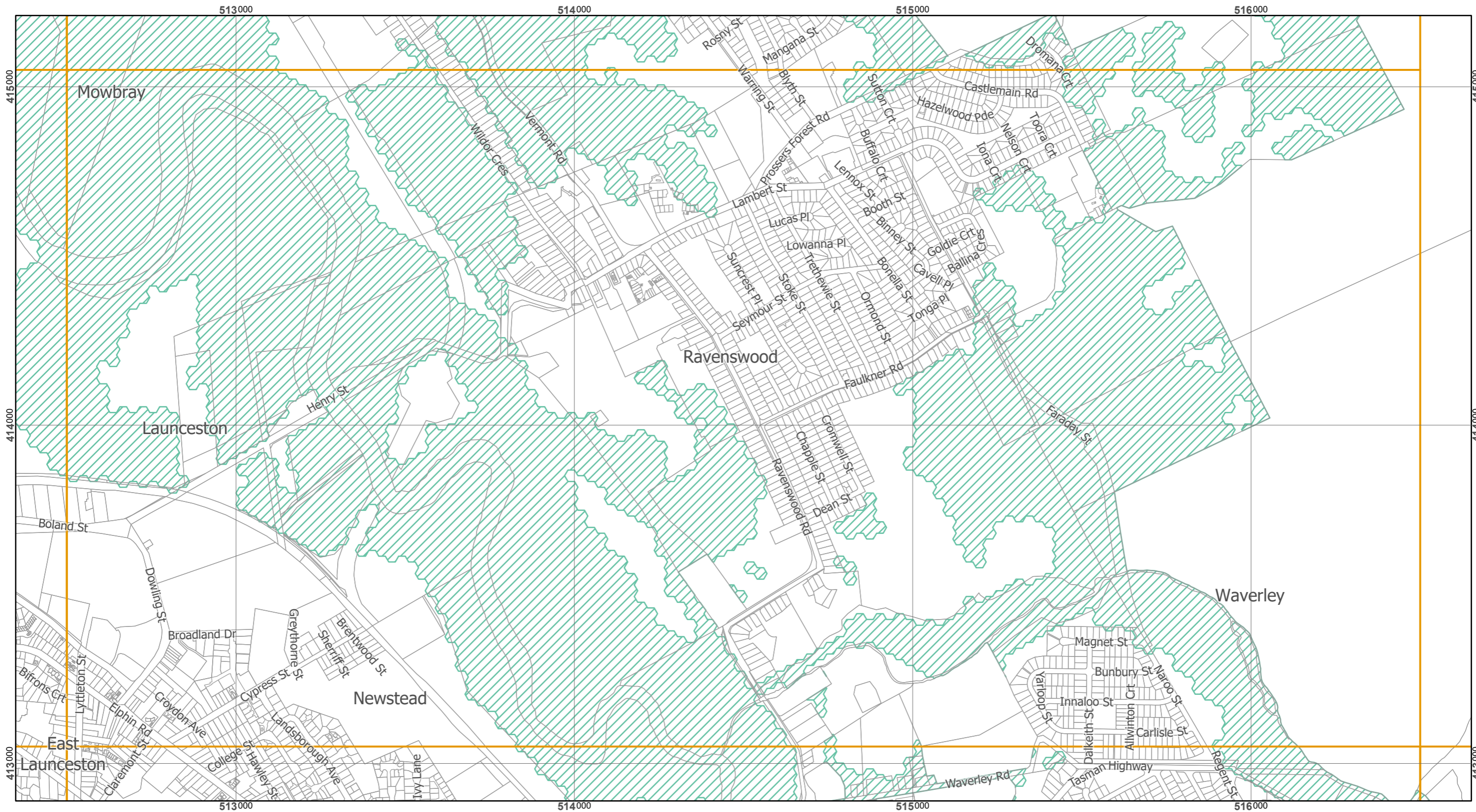
Scale at A3 : 1:11,000

Coordinate System : GDA 94 MGA Zone 55
 Zone data from Launceston City Council
 Base Topographic data from LIST ©State of Tasmania

Print date : 2/12/2019



Tasmanian Planning Scheme - Launceston LPS: Natural Assets Overlay Map 2 of 2



Legend

 Priority Vegetation Area

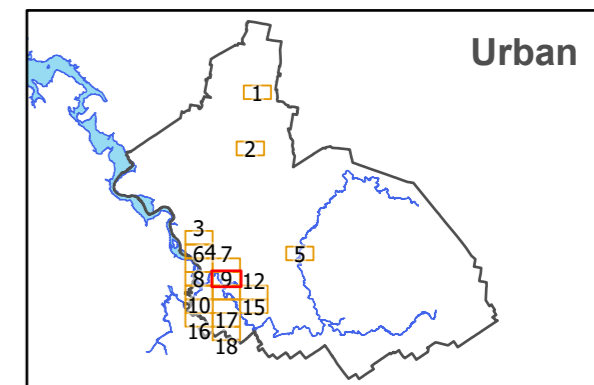
Map 9 of 18 (Urban)



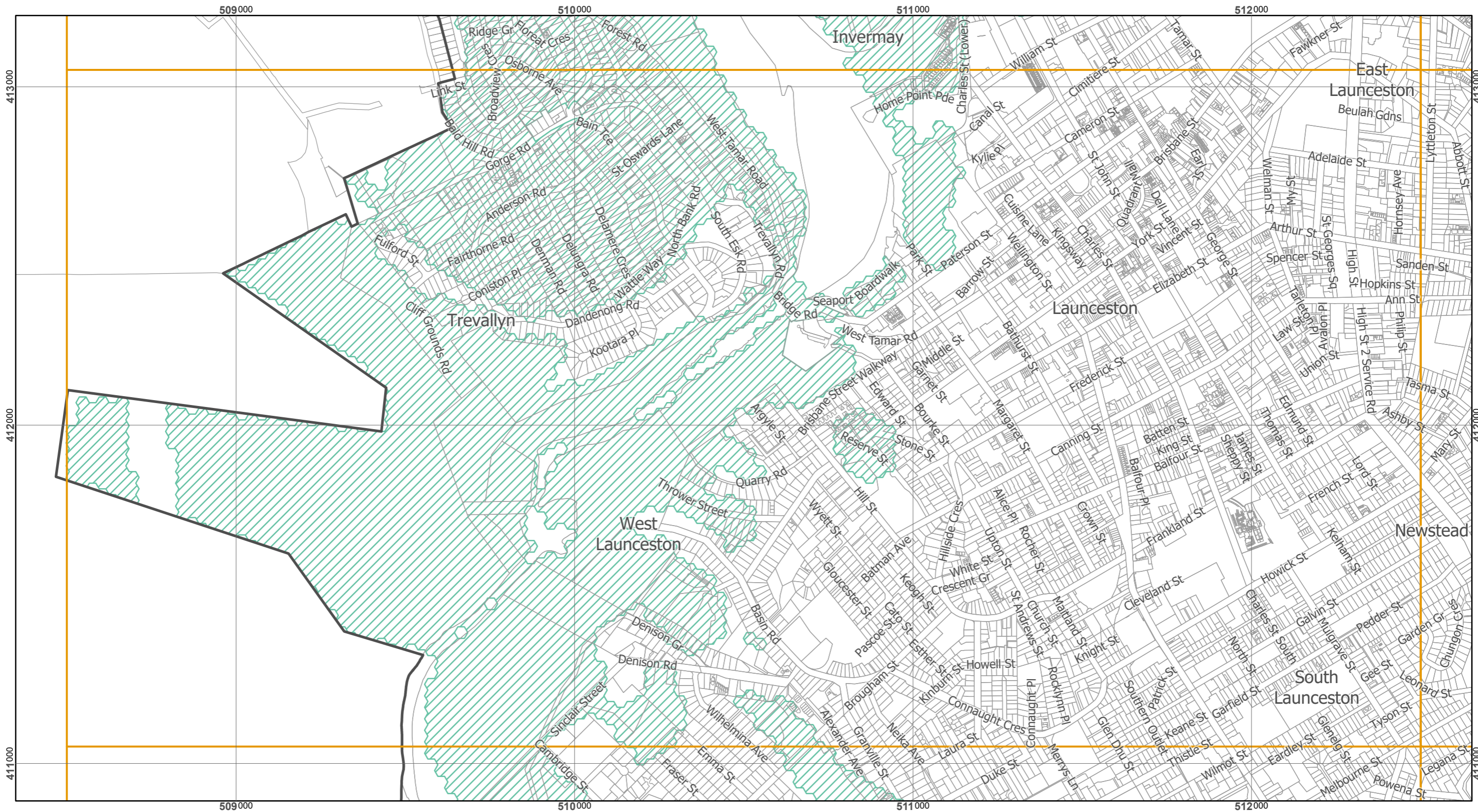
Scale at A3 : 1:11,000

Coordinate System : GDA 94 MGA Zone 55
 Zone data from Launceston City Council
 Base Topographic data from LIST ©State of Tasmania

Print date : 2/12/2019



Tasmanian Planning Scheme - Launceston LPS: Natural Assets Overlay Map 2 of 2



Legend

 Priority Vegetation Area

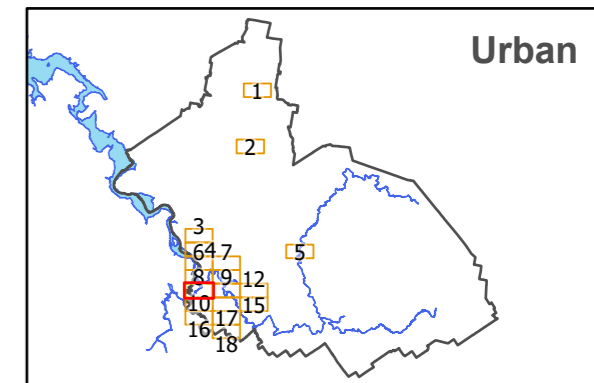
Map 10 of 18 (Urban)



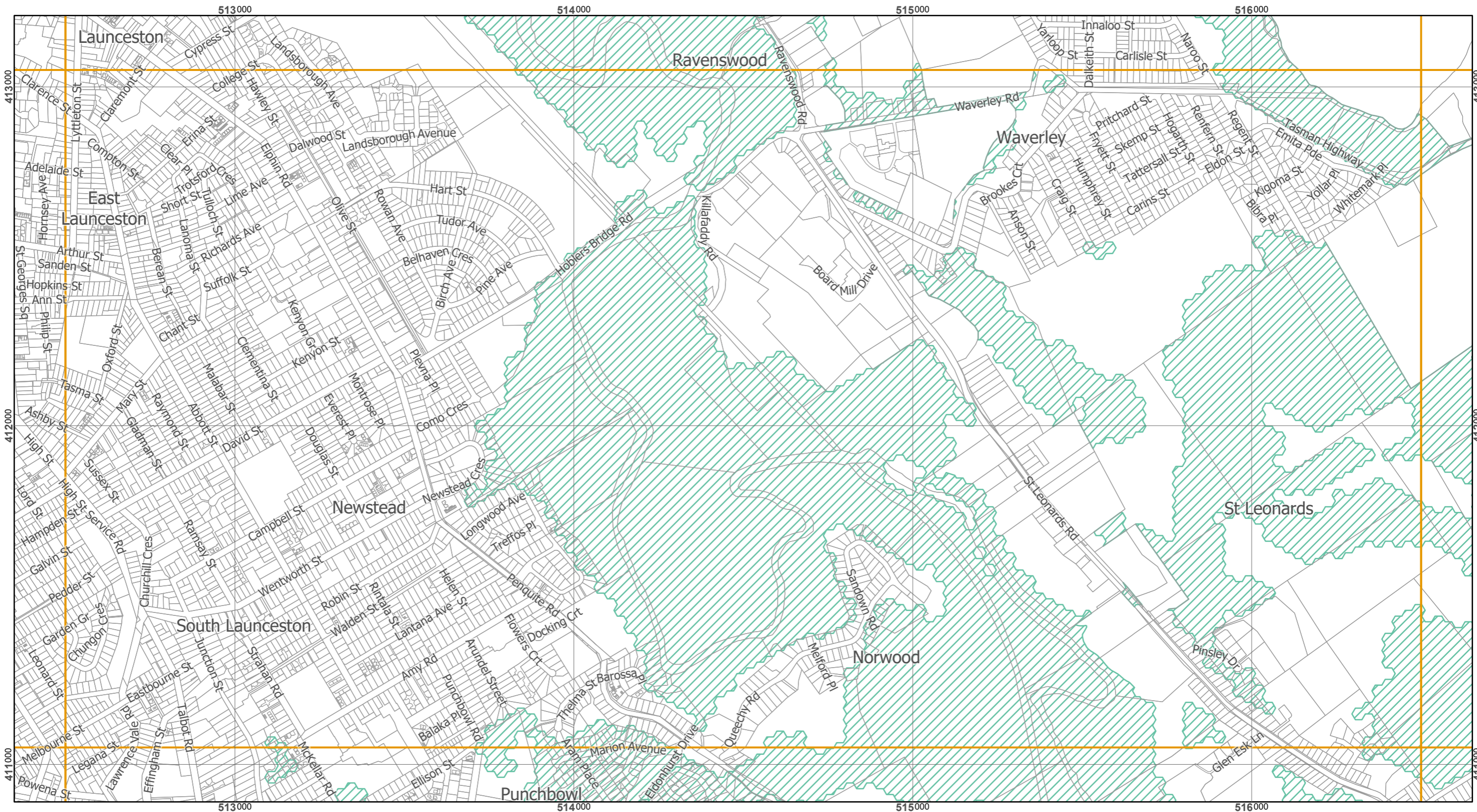
Scale at A3 : 1:11,000

Coordinate System : GDA 94 MGA Zone 55
 Zone data from Launceston City Council
 Base Topographic data from LIST ©State of Tasmania

Print date : 2/12/2019



Tasmanian Planning Scheme - Launceston LPS: Natural Assets Overlay Map 2 of 2



Legend

 Priority Vegetation Area

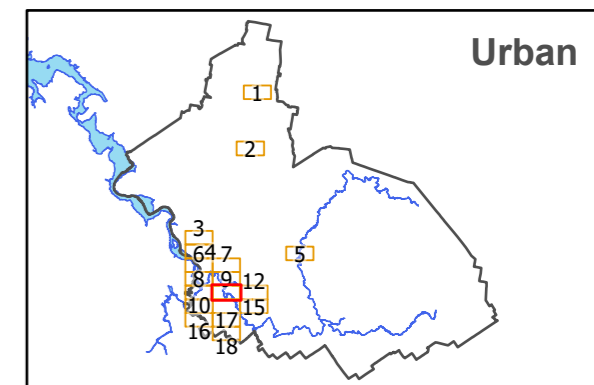
Map 11 of 18 (Urban)



Scale at A3 : 1:11,000

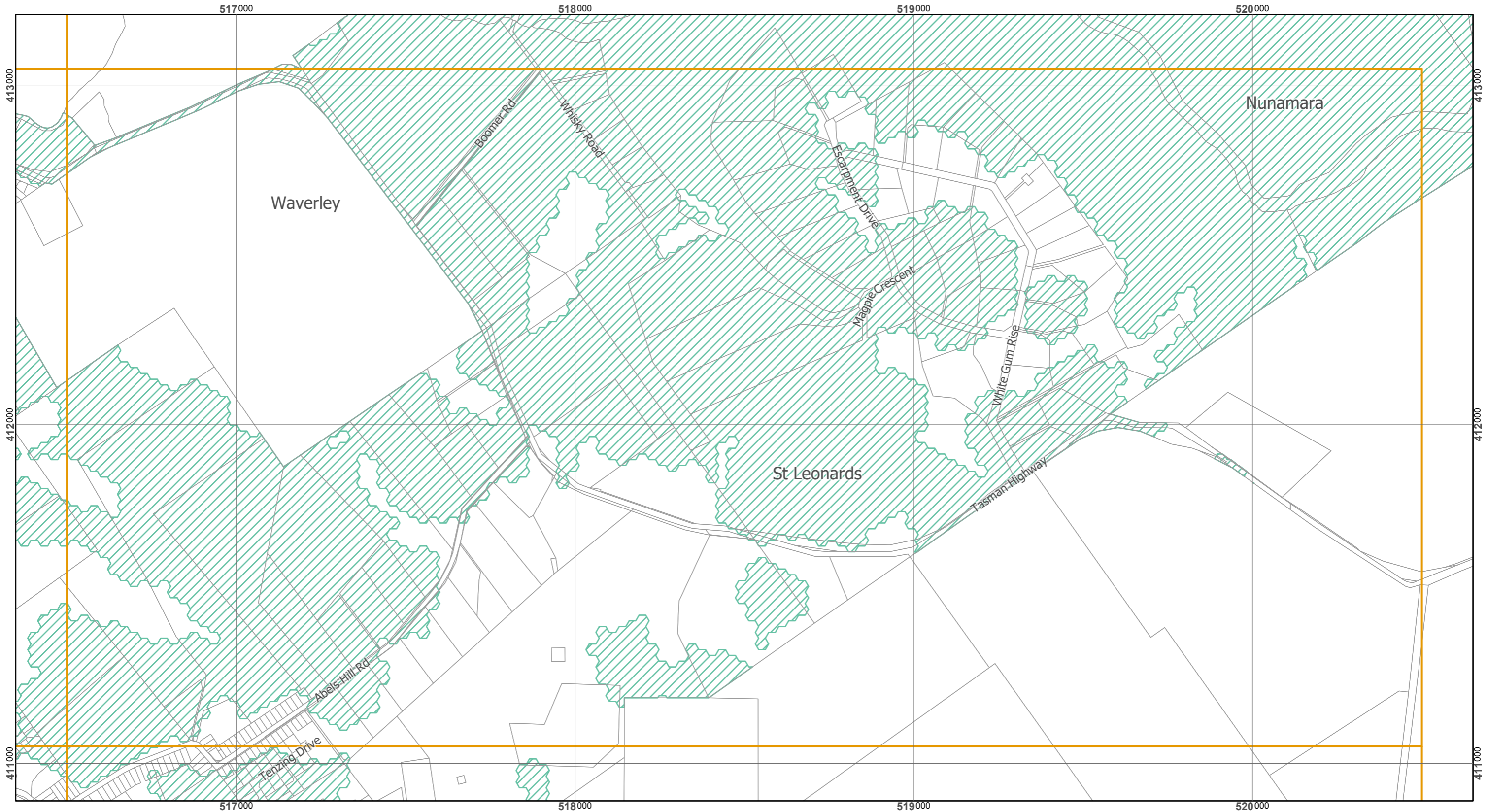
Coordinate System : GDA 94 MGA Zone 55
 Zone data from Launceston City Council
 Base Topographic data from LIST ©State of Tasmania

Print date : 2/12/2019



Urban

Tasmanian Planning Scheme - Launceston LPS: Natural Assets Overlay Map 2 of 2



Legend

 Priority Vegetation Area

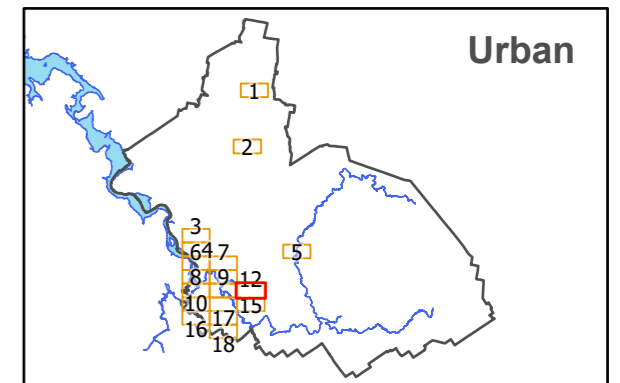
Map 12 of 18 (Urban)



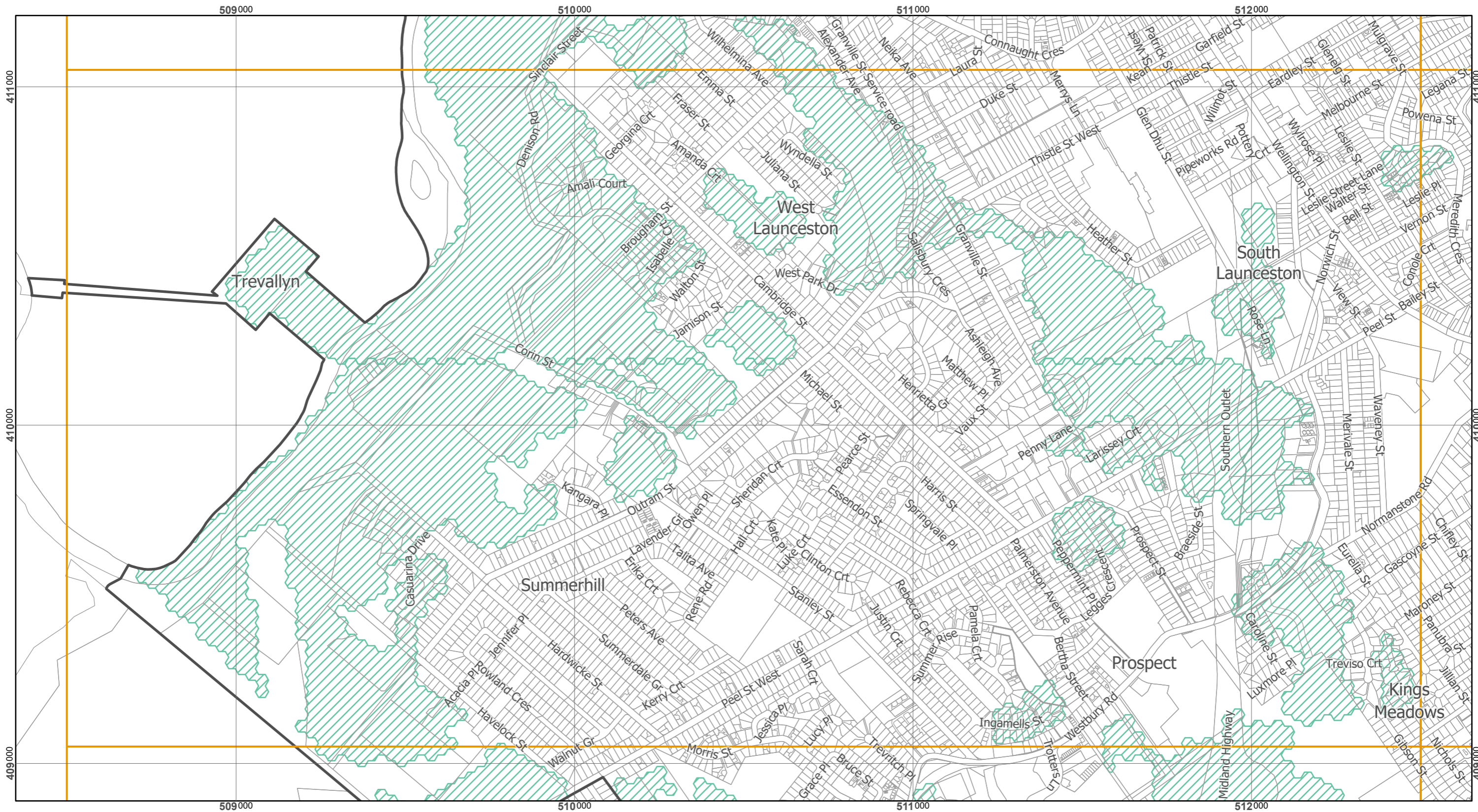
Scale at A3 : 1:11,000

Coordinate System : GDA 94 MGA Zone 55
Zone data from Launceston City Council
Base Topographic data from LIST ©State of Tasmania

Print date : 2/12/2019



Tasmanian Planning Scheme - Launceston LPS: Natural Assets Overlay Map 2 of 2



Legend

 Priority Vegetation Area

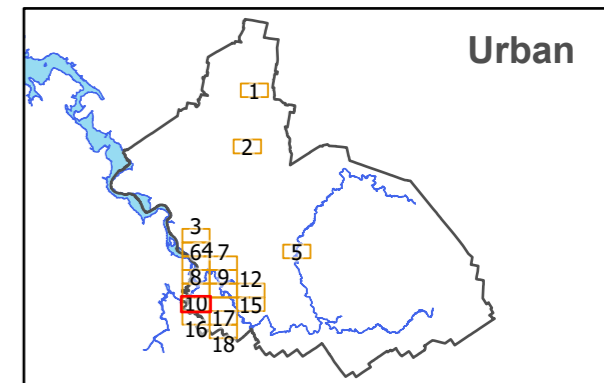
Map 13 of 18 (Urban)



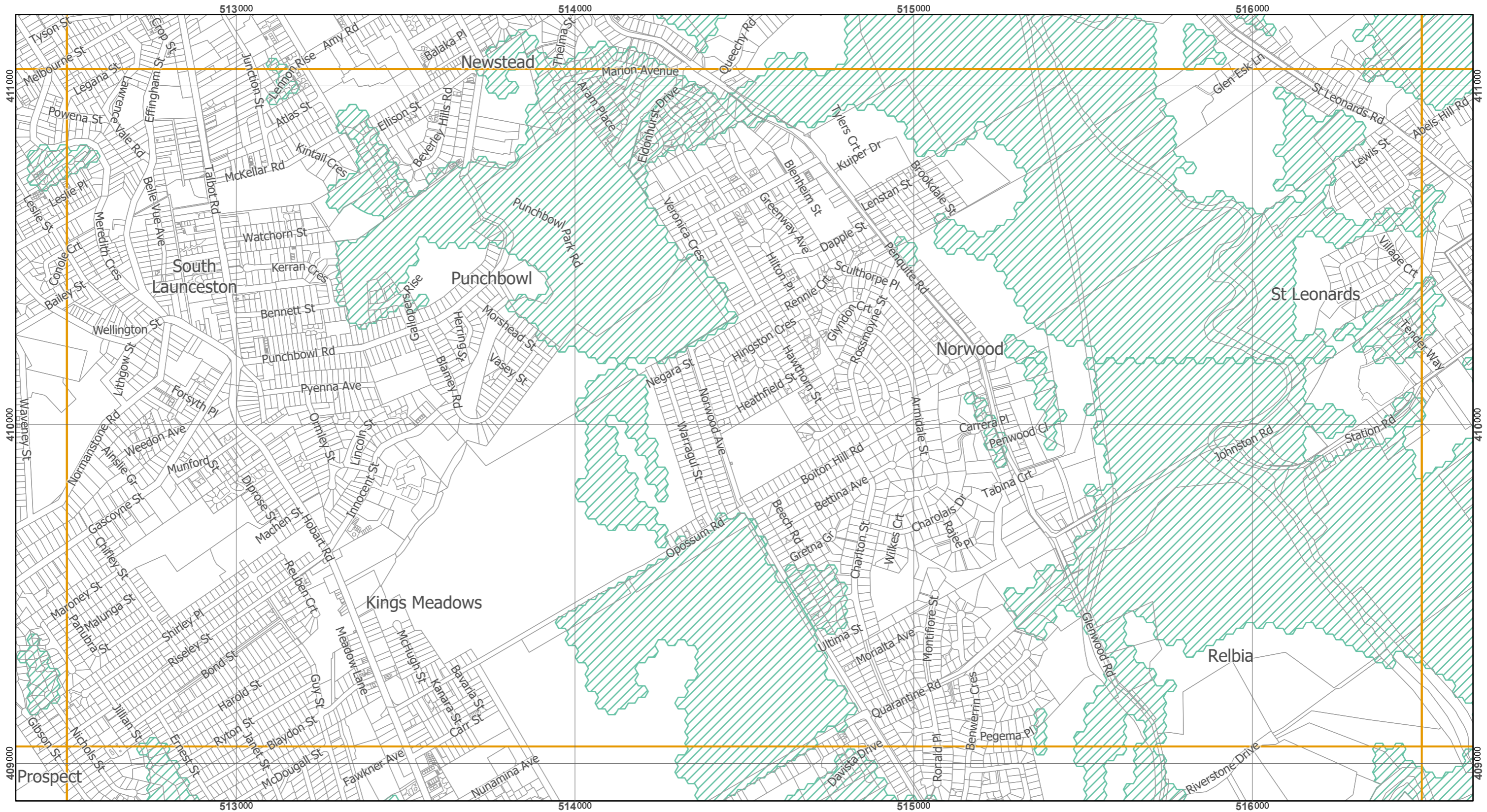
Scale at A3 : 1:11,000

Coordinate System : GDA 94 MGA Zone 55
 Zone data from Launceston City Council
 Base Topographic data from LIST ©State of Tasmania

Print date : 2/12/2019



Tasmanian Planning Scheme - Launceston LPS: Natural Assets Overlay Map 2 of 2



Legend

 Priority Vegetation Area

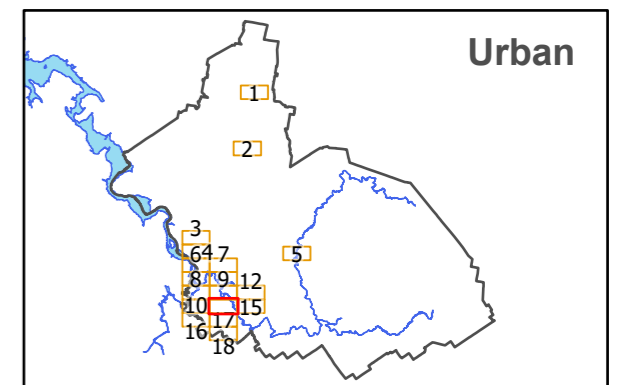
Map 14 of 18 (Urban)



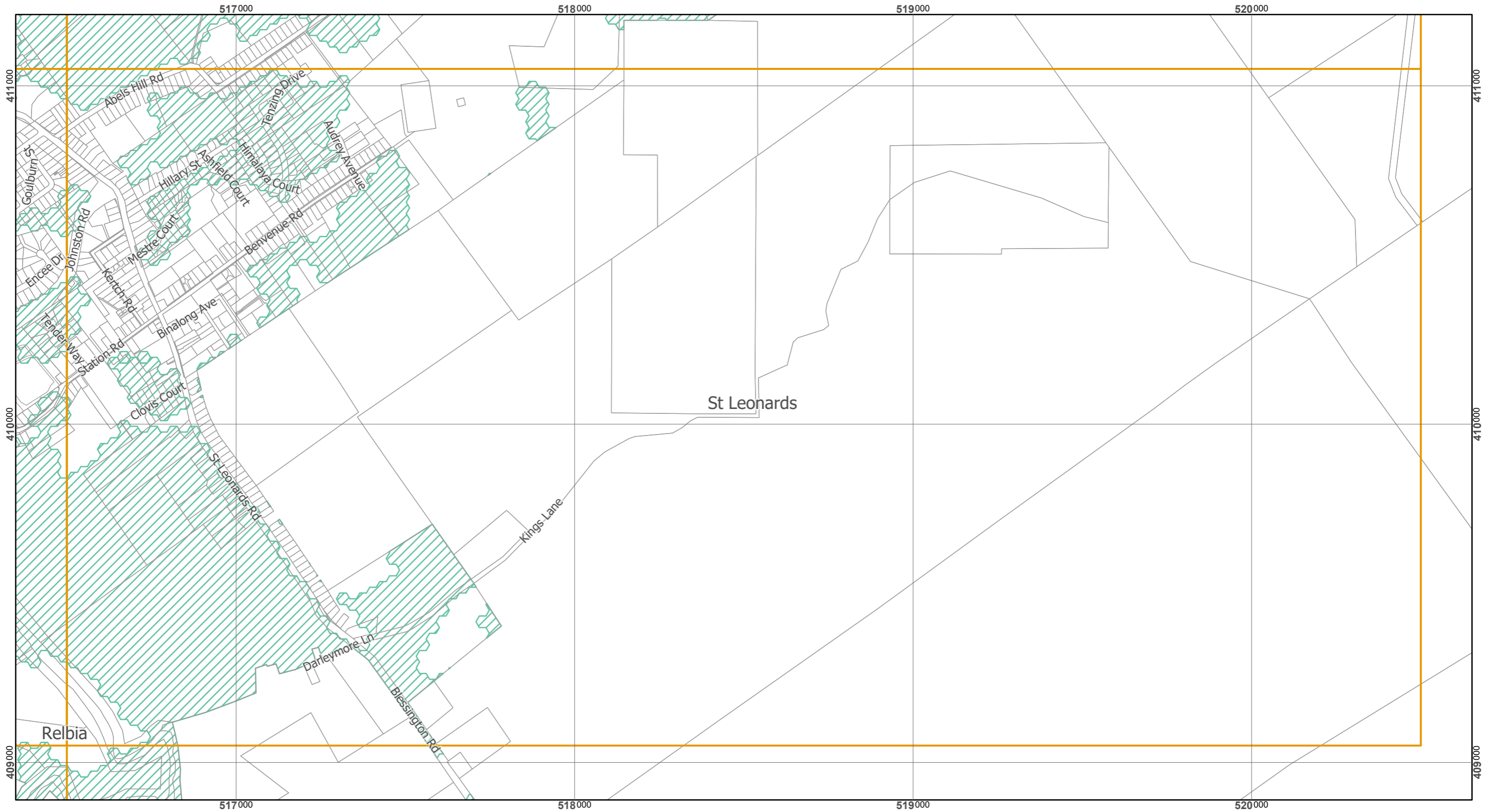
Scale at A3 : 1:11,000

Coordinate System : GDA 94 MGA Zone 55
 Zone data from Launceston City Council
 Base Topographic data from LIST ©State of Tasmania

Print date : 2/12/2019



Tasmanian Planning Scheme - Launceston LPS: Natural Assets Overlay Map 2 of 2



Legend

 Priority Vegetation Area

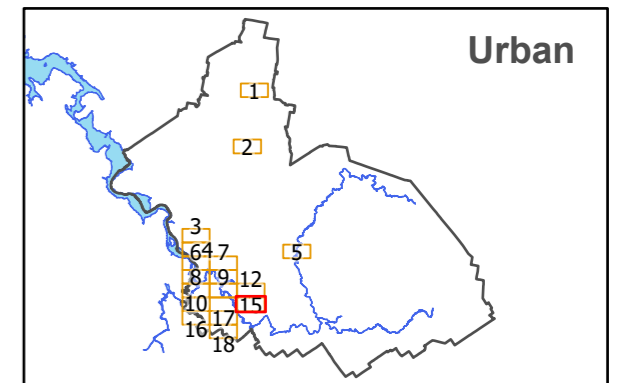
Map 15 of 18 (Urban)



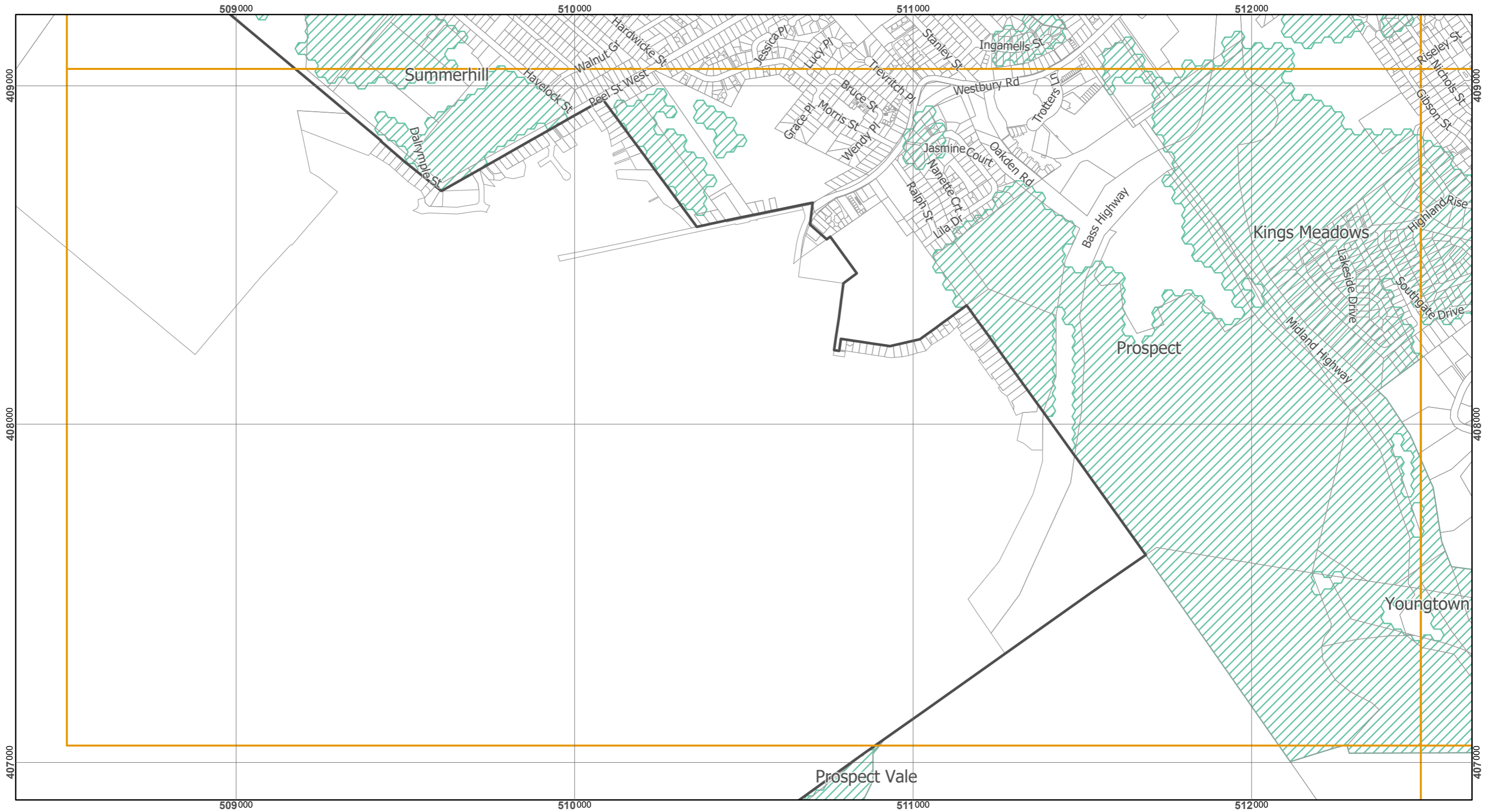
Scale at A3 : 1:11,000

Coordinate System : GDA 94 MGA Zone 55
 Zone data from Launceston City Council
 Base Topographic data from LIST ©State of Tasmania

Print date : 2/12/2019



Tasmanian Planning Scheme - Launceston LPS: Natural Assets Overlay Map 2 of 2



Legend

 Priority Vegetation Area

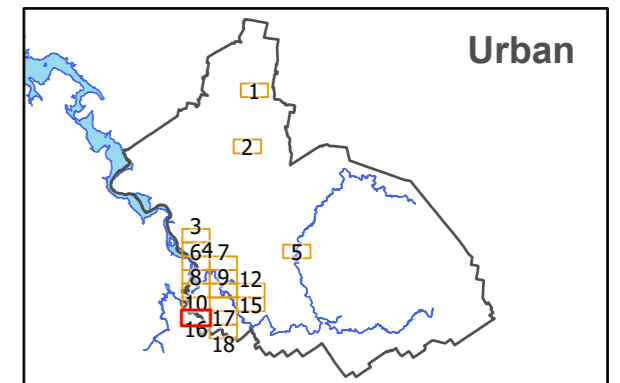
Map 16 of 18 (Urban)



Scale at A3 : 1:11,000

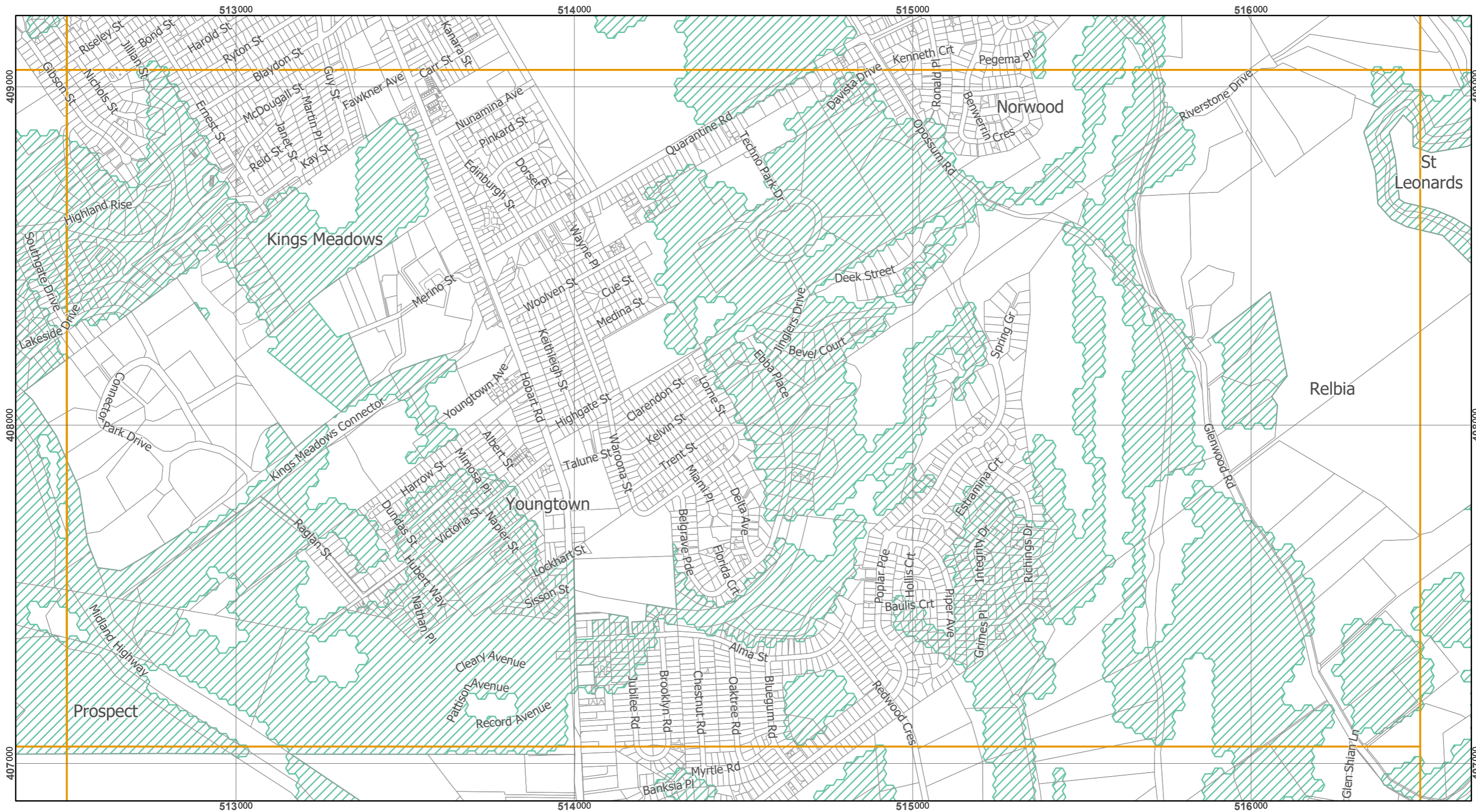
Coordinate System : GDA 94 MGA Zone 55
 Zone data from Launceston City Council
 Base Topographic data from LIST ©State of Tasmania

Print date : 2/12/2019



Urban

Tasmanian Planning Scheme - Launceston LPS: Natural Assets Overlay Map 2 of 2



Legend

 Priority Vegetation Area

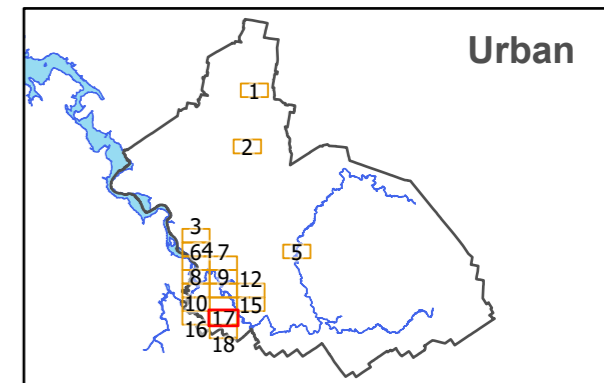
Map 17 of 18 (Urban)



Scale at A3 : 1:11,000

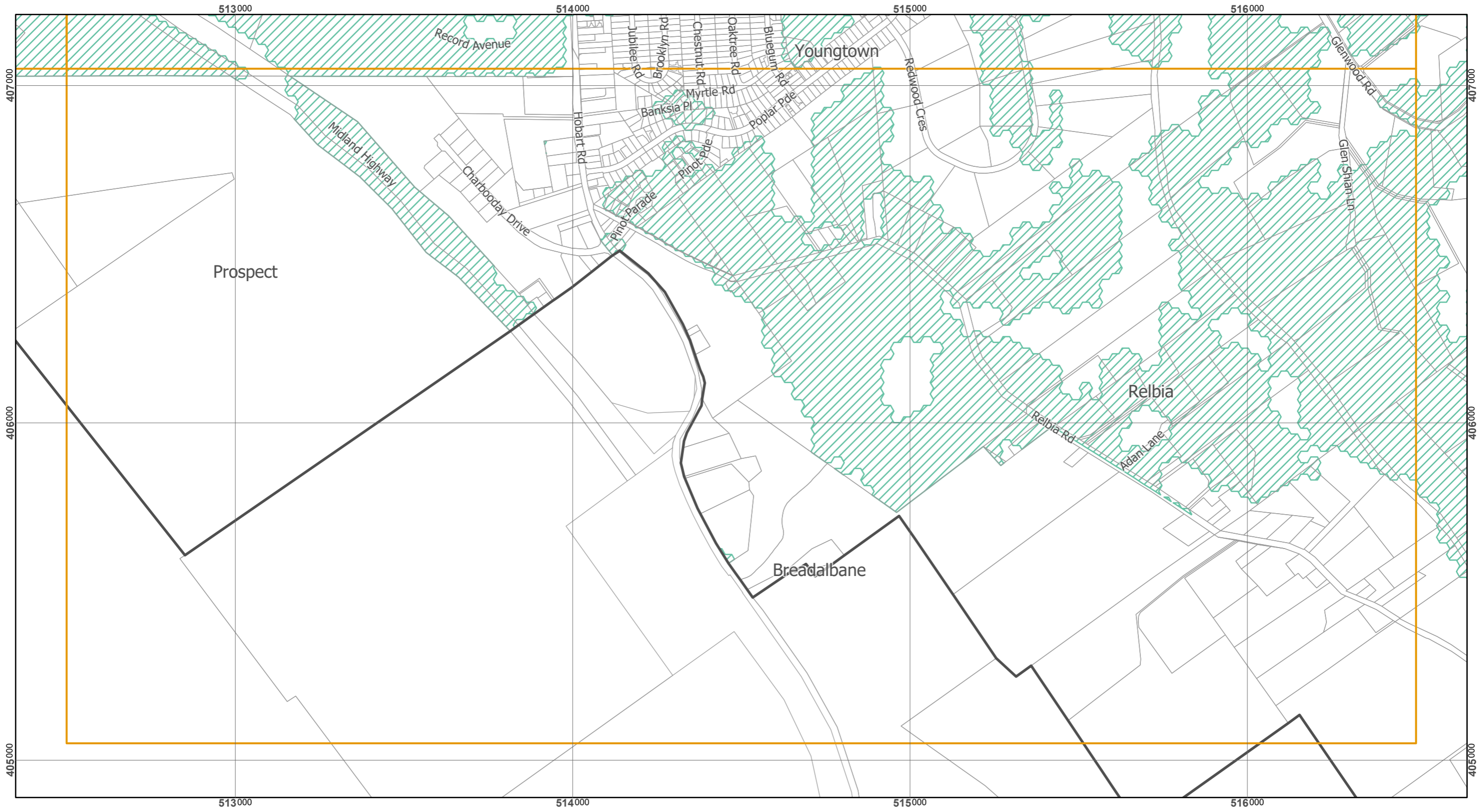
Coordinate System : GDA 94 MGA Zone 55
 Zone data from Launceston City Council
 Base Topographic data from LIST ©State of Tasmania

Print date : 2/12/2019



Urban

Tasmanian Planning Scheme - Launceston LPS: Natural Assets Overlay Map 2 of 2



Legend

 Priority Vegetation Area

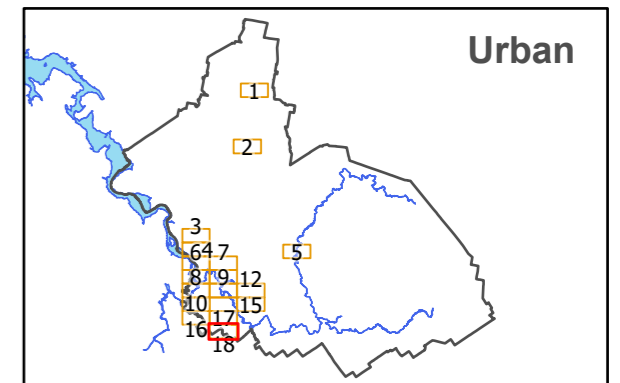
Map 18 of 18 (Urban)



Scale at A3 : 1:11,000

Coordinate System : GDA 94 MGA Zone 55
 Zone data from Launceston City Council
 Base Topographic data from LIST ©State of Tasmania

Print date : 2/12/2019



Urban