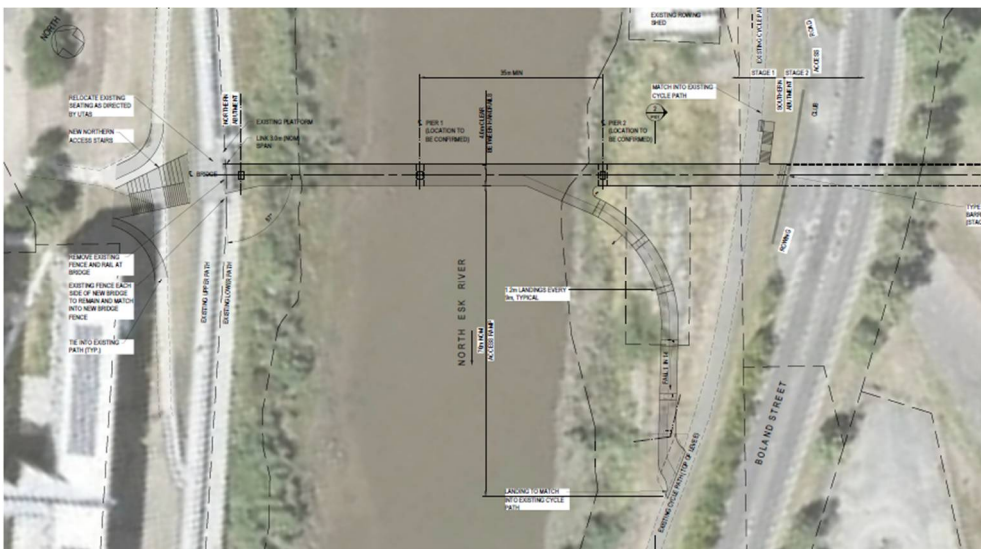
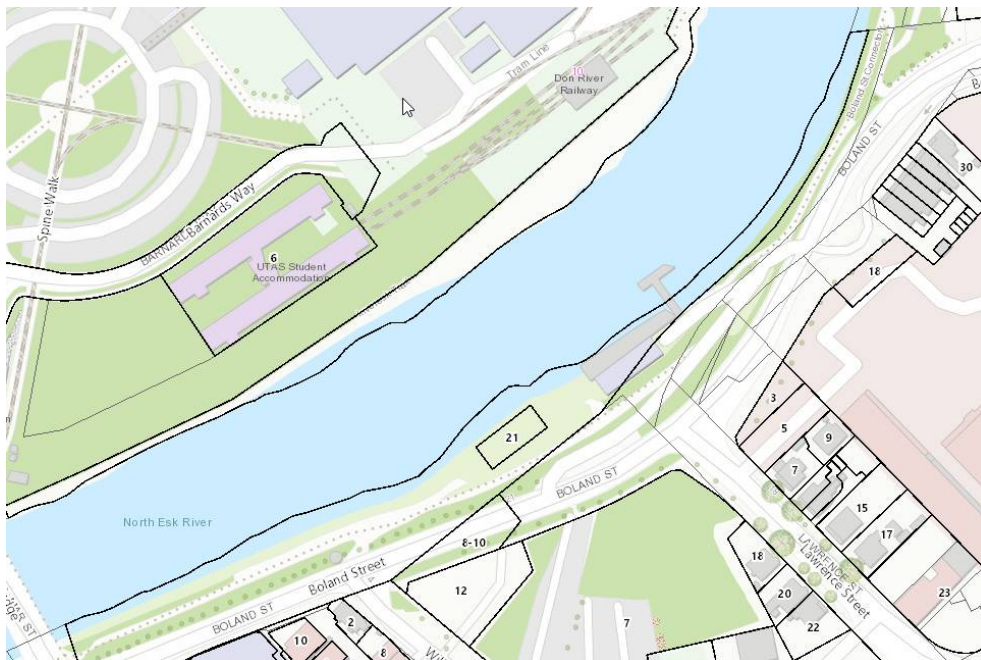


LOCALITY MAP

DA0312/2019 - 2-4 Invermay Road, Invermay and the land extending over the North Esk River from the existing viewing platform on the northern levee adjacent to the Inveresk student accommodation building located at 6 Barnards Way, Invermay within CT 174633/2, and continuing south east across the levee and river to a position on the southern levee bank immediately to the south west of the Scotch Oakburn College Rowing Club and extending into Boland Street road reserve within CT144355/1



Locality Map

Scale: This Map Is Not to Scale