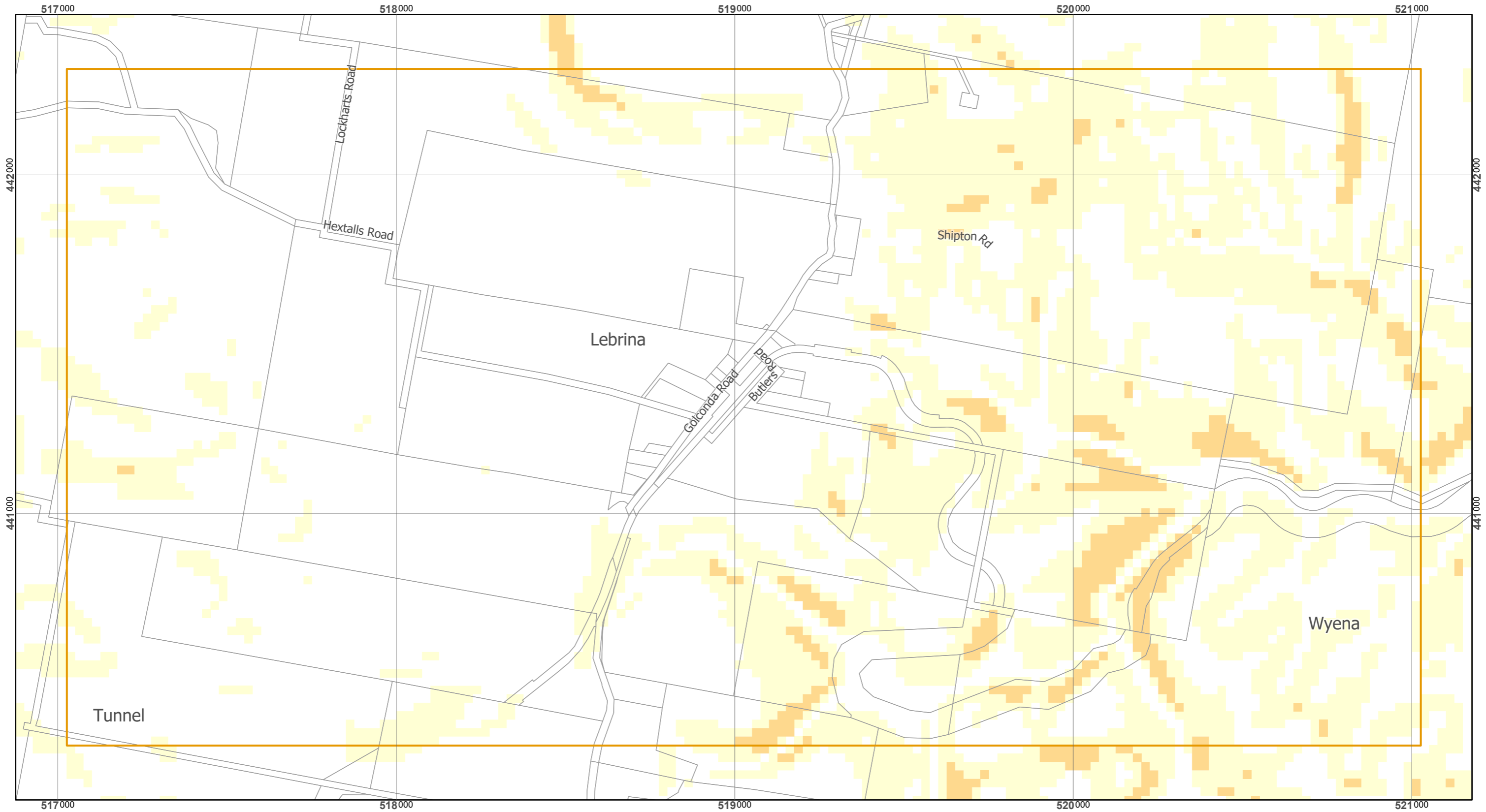


# Tasmanian Planning Scheme - Launceston LPS: Landslip Hazard Overlay Map



## Legend

- Low landslip hazard
- Medium landslip hazard
- Medium-active landslip hazard
- High landslip hazard

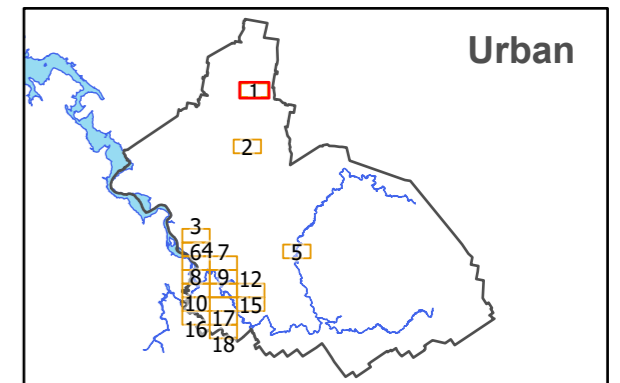
## Map 1 of 18 (Urban)



Scale at A3 : 1:11,000

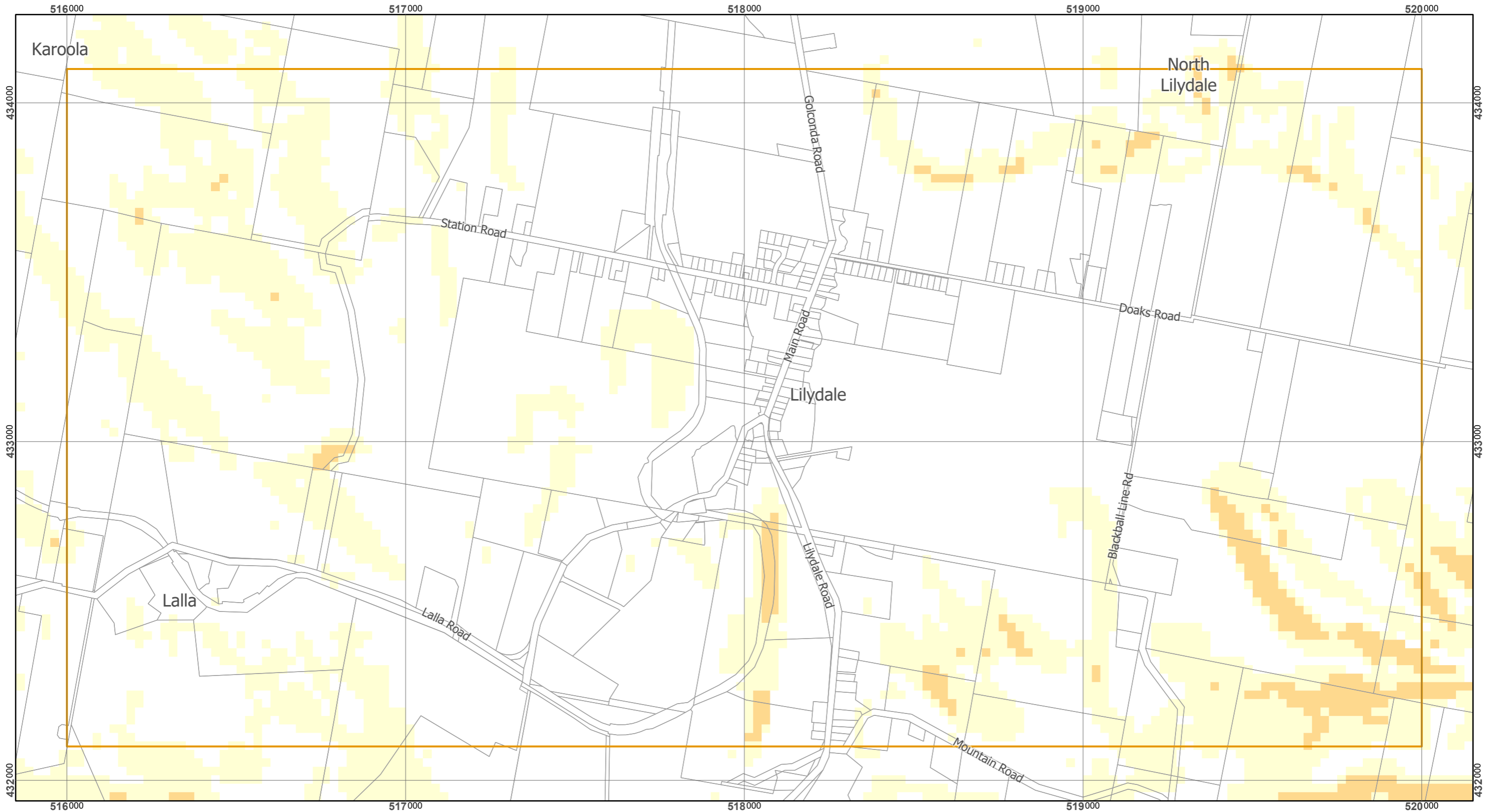
Coordinate System : GDA 94 MGA Zone 55  
 Zone data from Launceston City Council  
 Base Topographic data from LIST ©State of Tasmania

Print date : 29/08/2019



## Urban

# Tasmanian Planning Scheme - Launceston LPS: Landslip Hazard Overlay Map



## Legend

- Low landslip hazard
- Medium landslip hazard
- Medium-active landslip hazard
- High landslip hazard

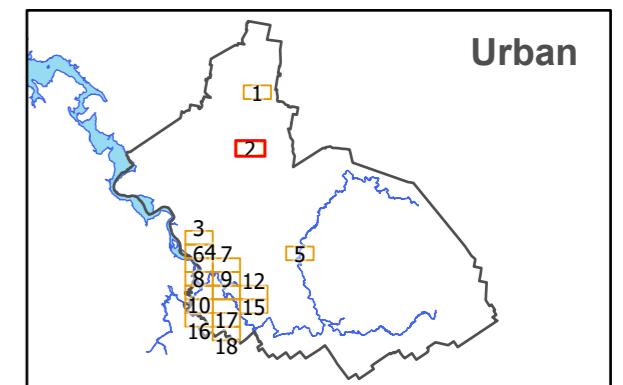
## Map 2 of 18 (Urban)



Scale at A3 : 1:11,000

Coordinate System : GDA 94 MGA Zone 55  
 Zone data from Launceston City Council  
 Base Topographic data from LIST ©State of Tasmania

Print date : 29/08/2019



# Tasmanian Planning Scheme - Launceston LPS: Landslip Hazard Overlay Map



## Legend

- Low landslip hazard
- Medium landslip hazard
- Medium-active landslip hazard
- High landslip hazard

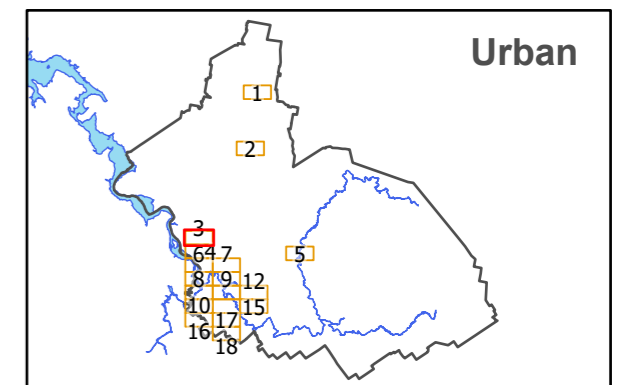
## Map 3 of 18 (Urban)



Scale at A3 : 1:11,000

Coordinate System : GDA 94 MGA Zone 55  
 Zone data from Launceston City Council  
 Base Topographic data from LIST ©State of Tasmania

Print date : 29/08/2019



# Tasmanian Planning Scheme - Launceston LPS: Landslip Hazard Overlay Map



## Legend

- Low landslip hazard
- Medium landslip hazard
- Medium-active landslip hazard
- High landslip hazard

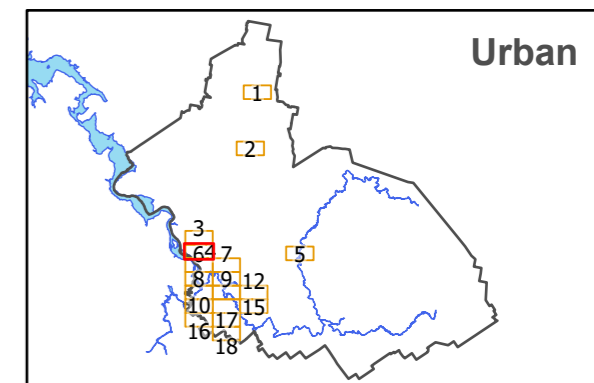
## Map 4 of 18 (Urban)



Scale at A3 : 1:11,000

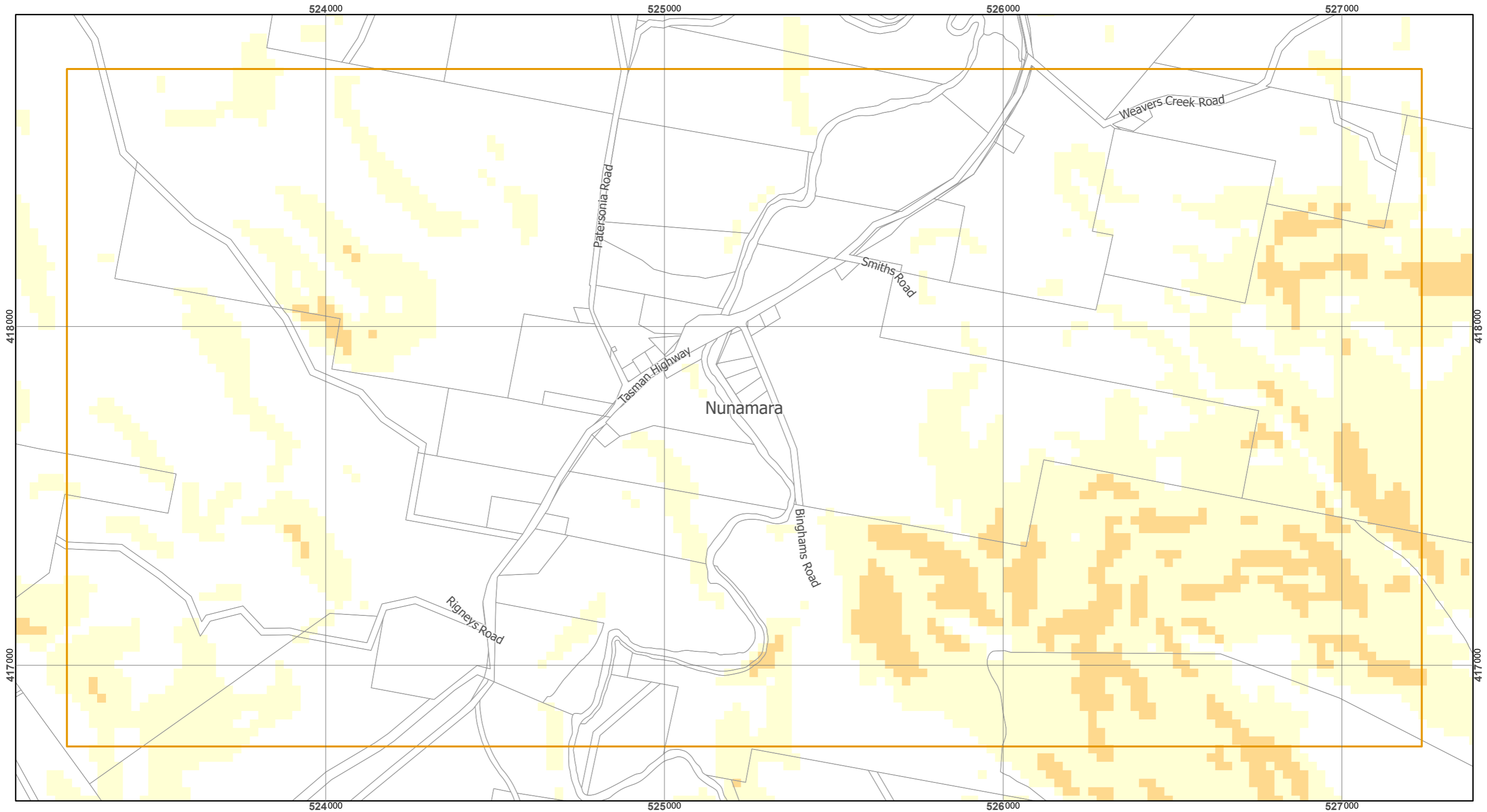
Coordinate System : GDA 94 MGA Zone 55  
 Zone data from Launceston City Council  
 Base Topographic data from LIST ©State of Tasmania

Print date : 29/08/2019



Urban

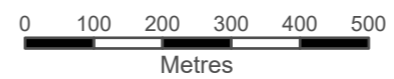
# Tasmanian Planning Scheme - Launceston LPS: Landslip Hazard Overlay Map



## Legend

- Low landslip hazard
- Medium landslip hazard
- Medium-active landslip hazard
- High landslip hazard

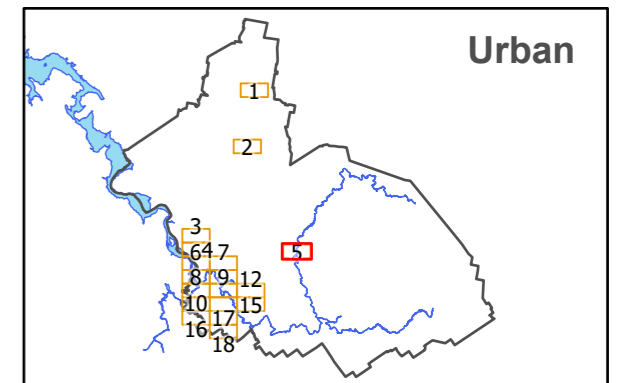
## Map 5 of 18 (Urban)



Scale at A3 : 1:11,000

Coordinate System : GDA 94 MGA Zone 55  
 Zone data from Launceston City Council  
 Base Topographic data from LIST ©State of Tasmania

Print date : 29/08/2019



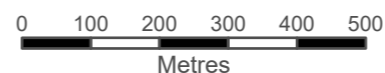
# Tasmanian Planning Scheme - Launceston LPS: Landslip Hazard Overlay Map



## Legend

- Low landslip hazard
- Medium landslip hazard
- Medium-active landslip hazard
- High landslip hazard

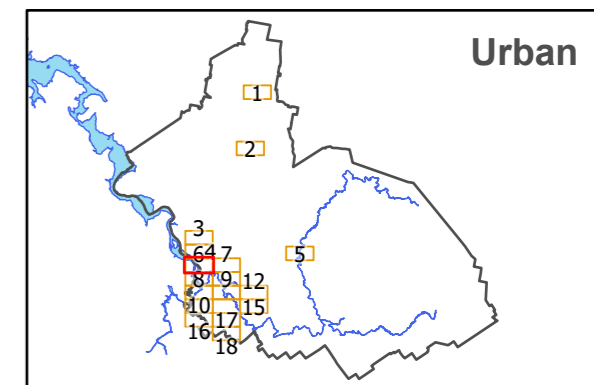
## Map 6 of 18 (Urban)



Scale at A3 : 1:11,000

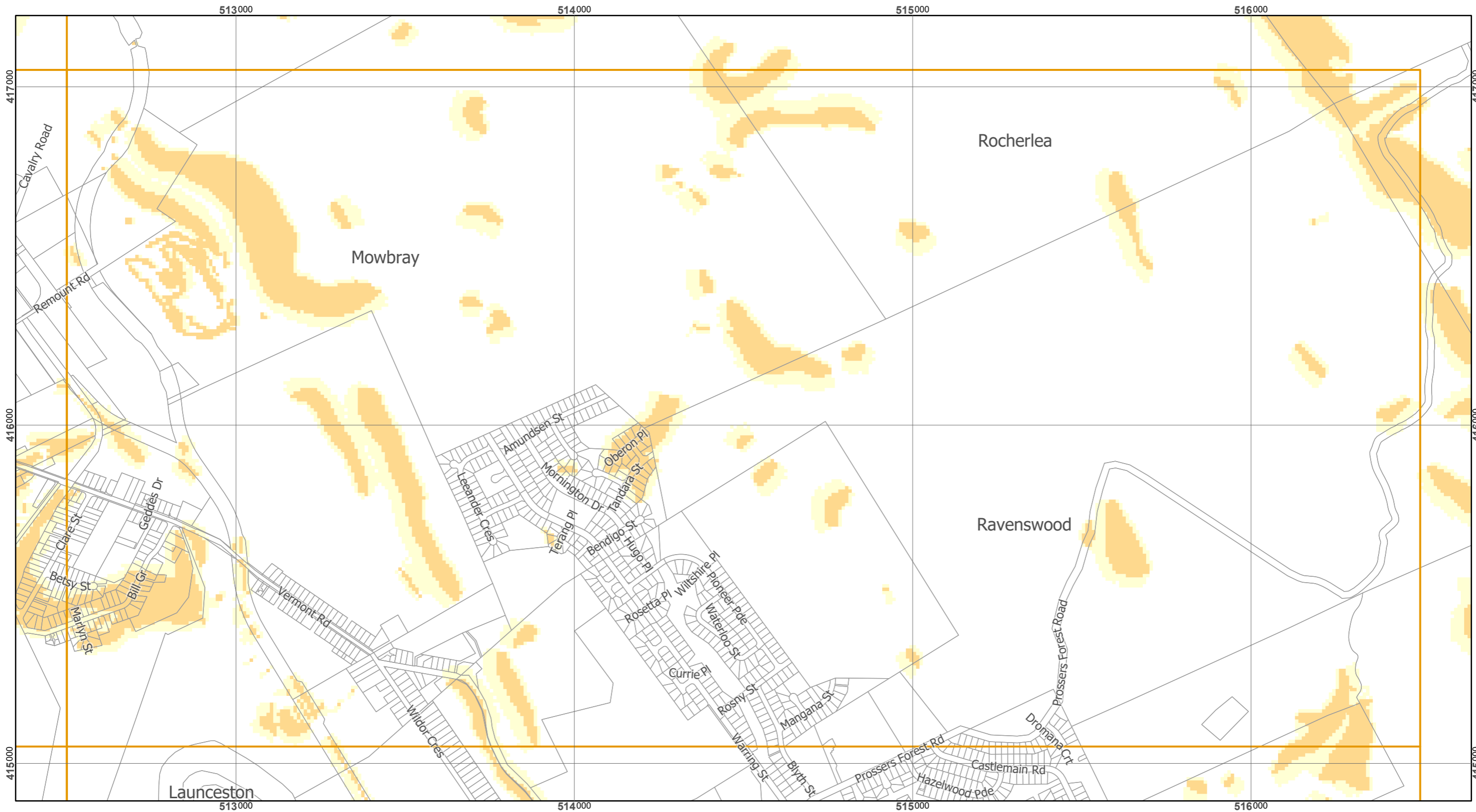
Coordinate System : GDA 94 MGA Zone 55  
 Zone data from Launceston City Council  
 Base Topographic data from LIST ©State of Tasmania

Print date : 29/08/2019



## Urban

# Tasmanian Planning Scheme - Launceston LPS: Landslip Hazard Overlay Map



## Legend

- Low landslip hazard
- Medium landslip hazard
- Medium-active landslip hazard
- High landslip hazard

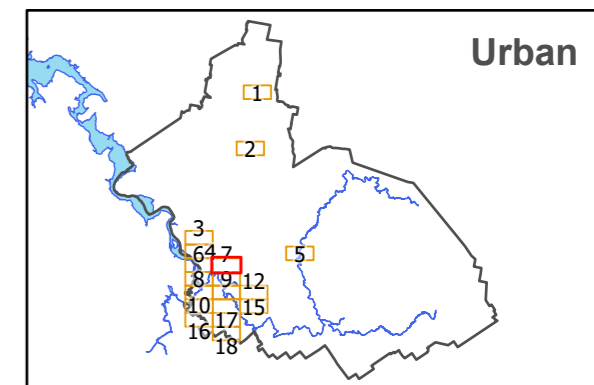
## Map 7 of 18 (Urban)



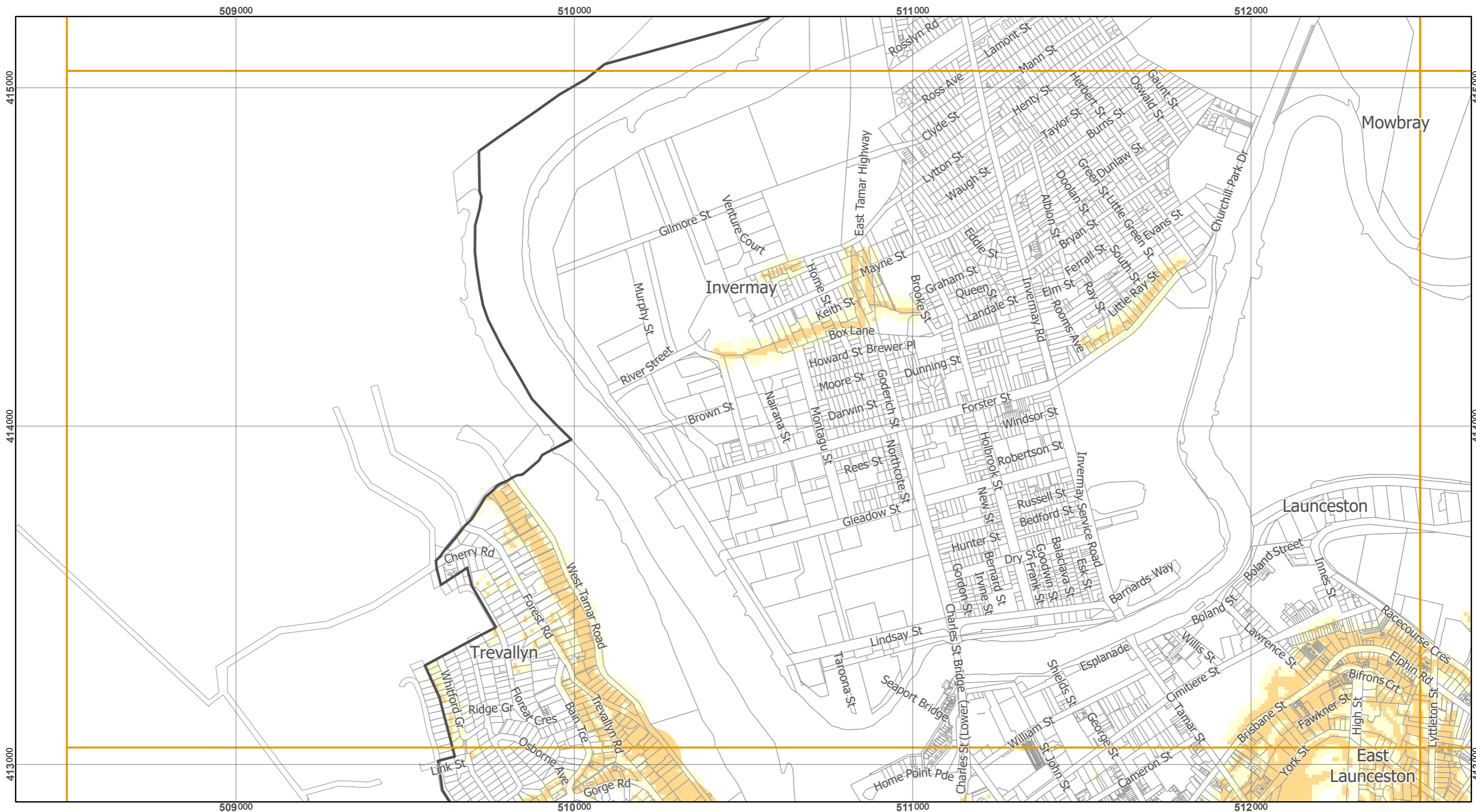
Scale at A3 : 1:11,000

Coordinate System : GDA 94 MGA Zone 55  
 Zone data from Launceston City Council  
 Base Topographic data from LIST ©State of Tasmania

Print date : 29/08/2019



# Tasmanian Planning Scheme - Launceston LPS: Landslip Hazard Overlay Map



## Legend

- Low landslip hazard
- Medium landslip hazard
- Medium-active landslip hazard
- High landslip hazard

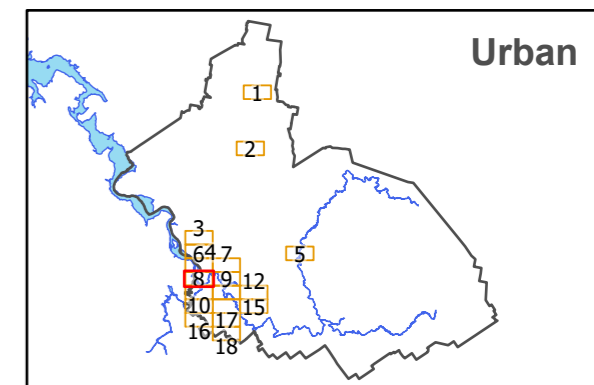
## Map 8 of 18 (Urban)



Scale at A3 : 1:11,000

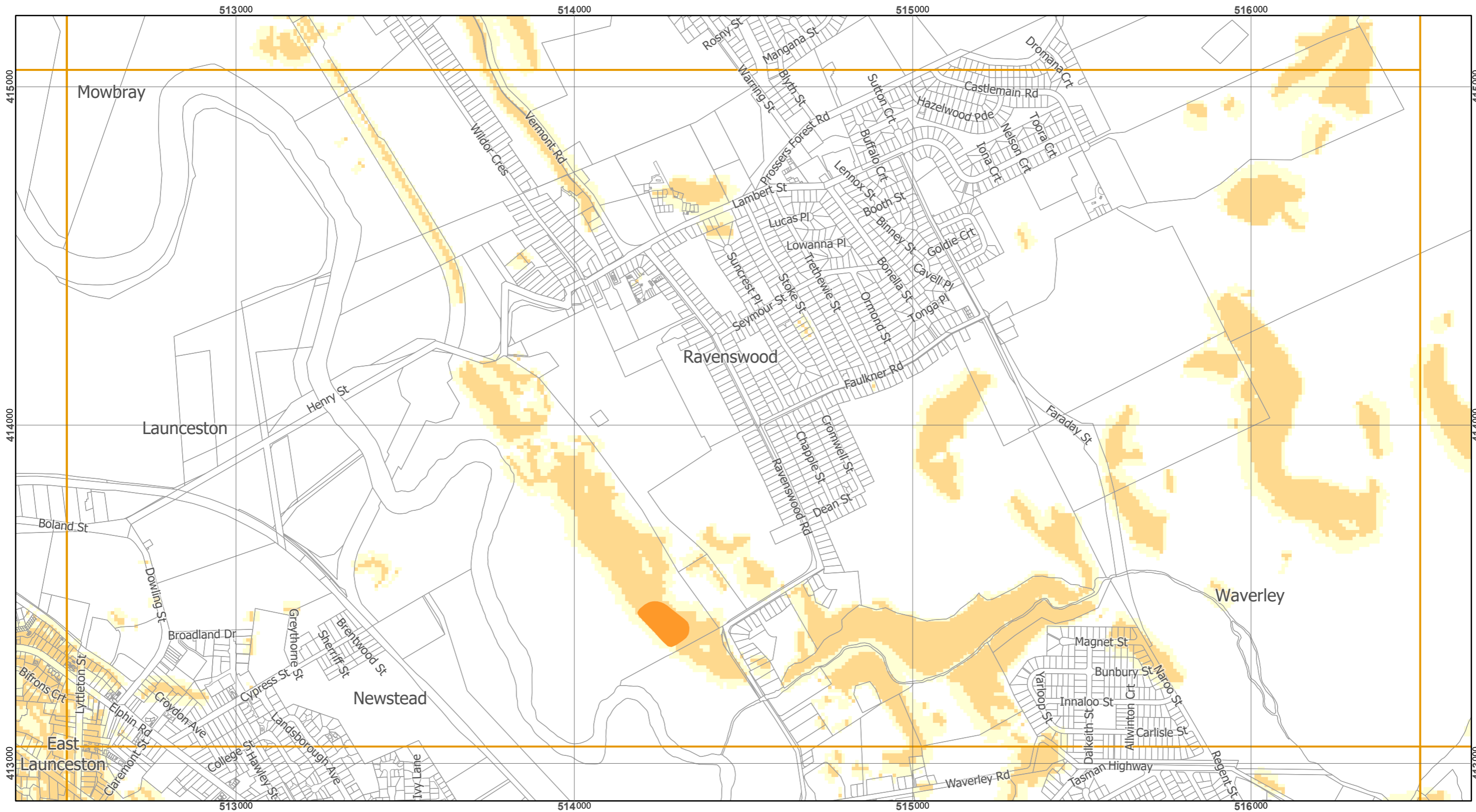
Coordinate System : GDA 94 MGA Zone 55  
 Zone data from Launceston City Council  
 Base Topographic data from LIST ©State of Tasmania

Print date : 29/08/2019





# Tasmanian Planning Scheme - Launceston LPS: Landslip Hazard Overlay Map



## Legend

- Low landslip hazard
- Medium landslip hazard
- Medium-active landslip hazard
- High landslip hazard

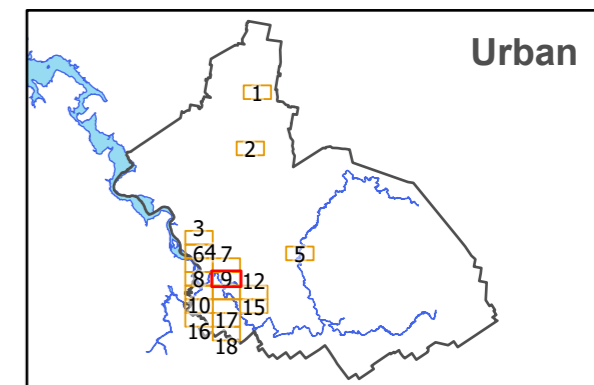
## Map 9 of 18 (Urban)



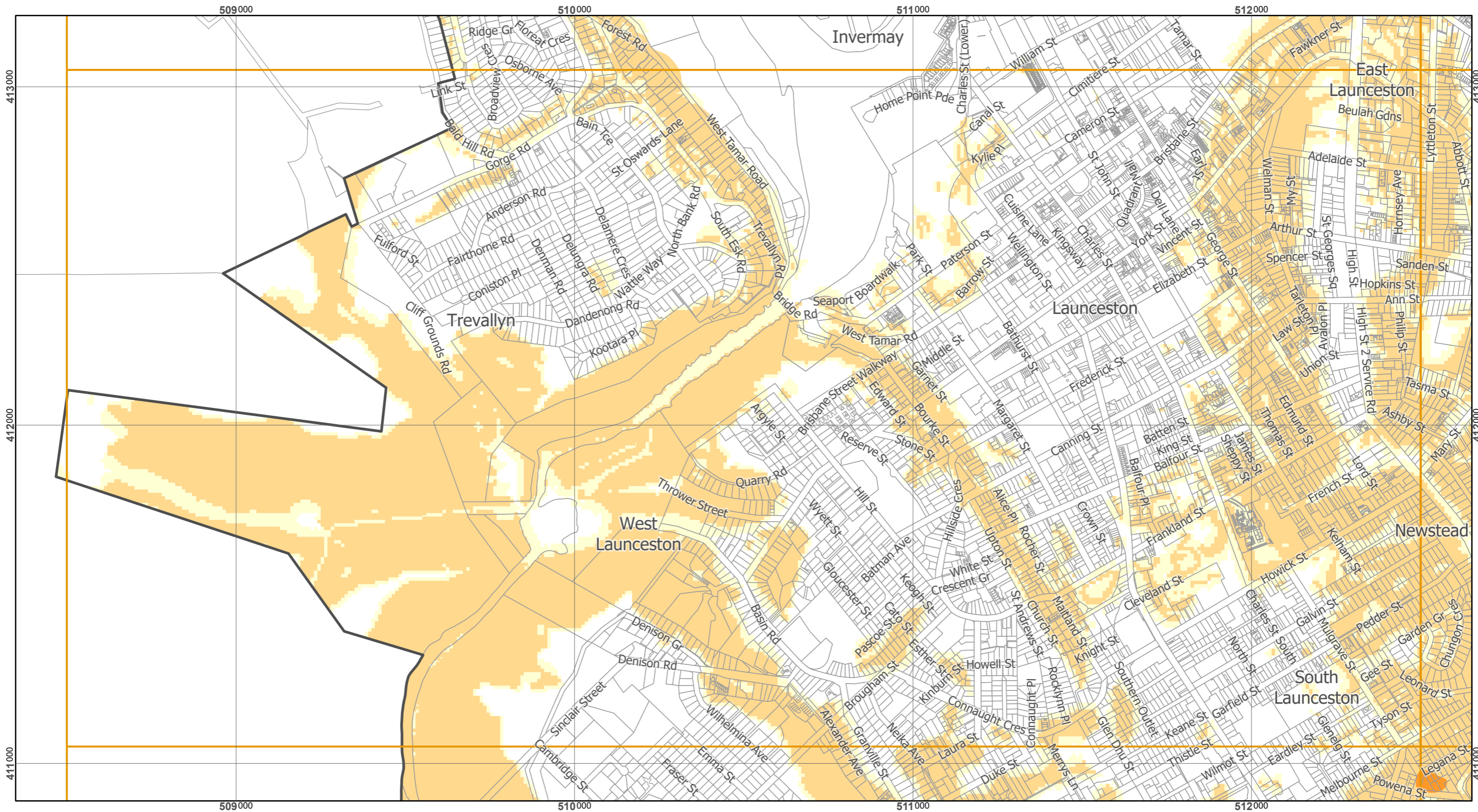
Scale at A3 : 1:11,000

Coordinate System : GDA 94 MGA Zone 55  
 Zone data from Launceston City Council  
 Base Topographic data from LIST ©State of Tasmania

Print date : 29/08/2019



# Tasmanian Planning Scheme - Launceston LPS: Landslip Hazard Overlay Map



## Legend

- Low landslip hazard
- Medium landslip hazard
- Medium-active landslip hazard
- High landslip hazard

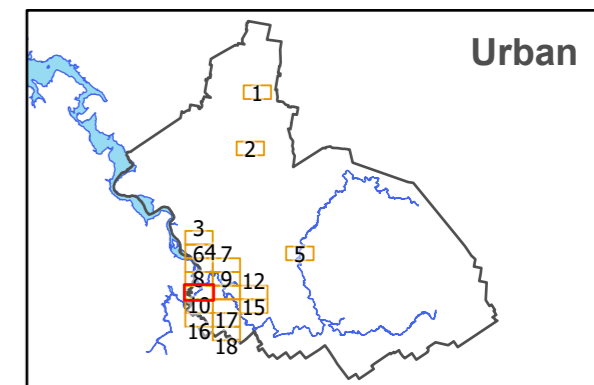
## Map 10 of 18 (Urban)



Scale at A3 : 1:11,000

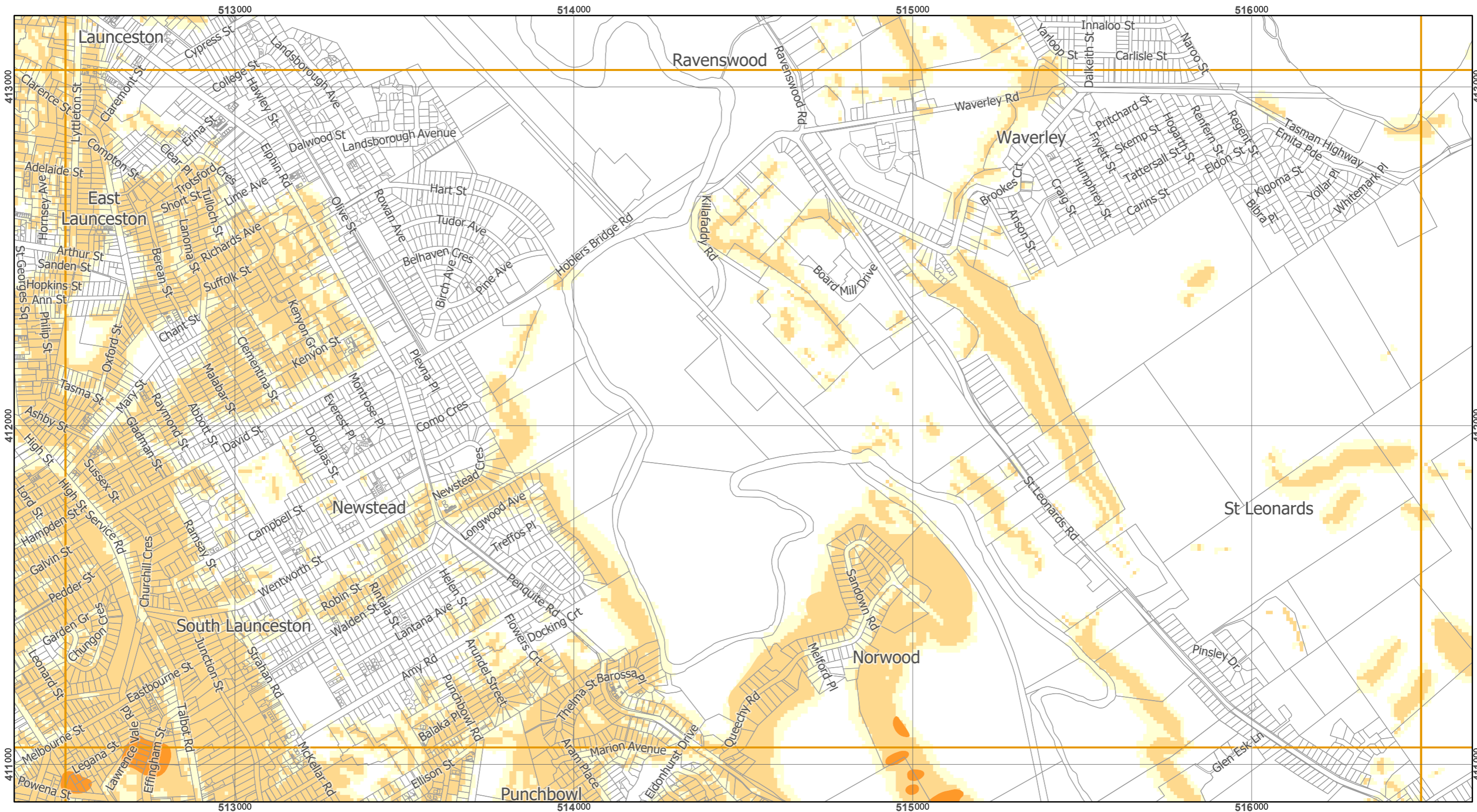
Coordinate System : GDA 94 MGA Zone 55  
 Zone data from Launceston City Council  
 Base Topographic data from LIST ©State of Tasmania

Print date : 29/08/2019



## Urban

# Tasmanian Planning Scheme - Launceston LPS: Landslip Hazard Overlay Map



## Legend

- Low landslip hazard
- Medium landslip hazard
- Medium-active landslip hazard
- High landslip hazard

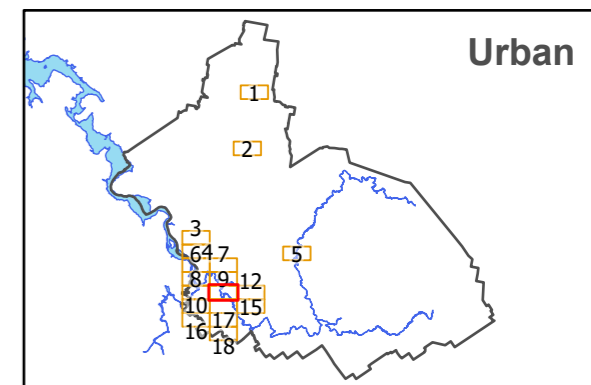
## Map 11 of 18 (Urban)



Scale at A3 : 1:11,000

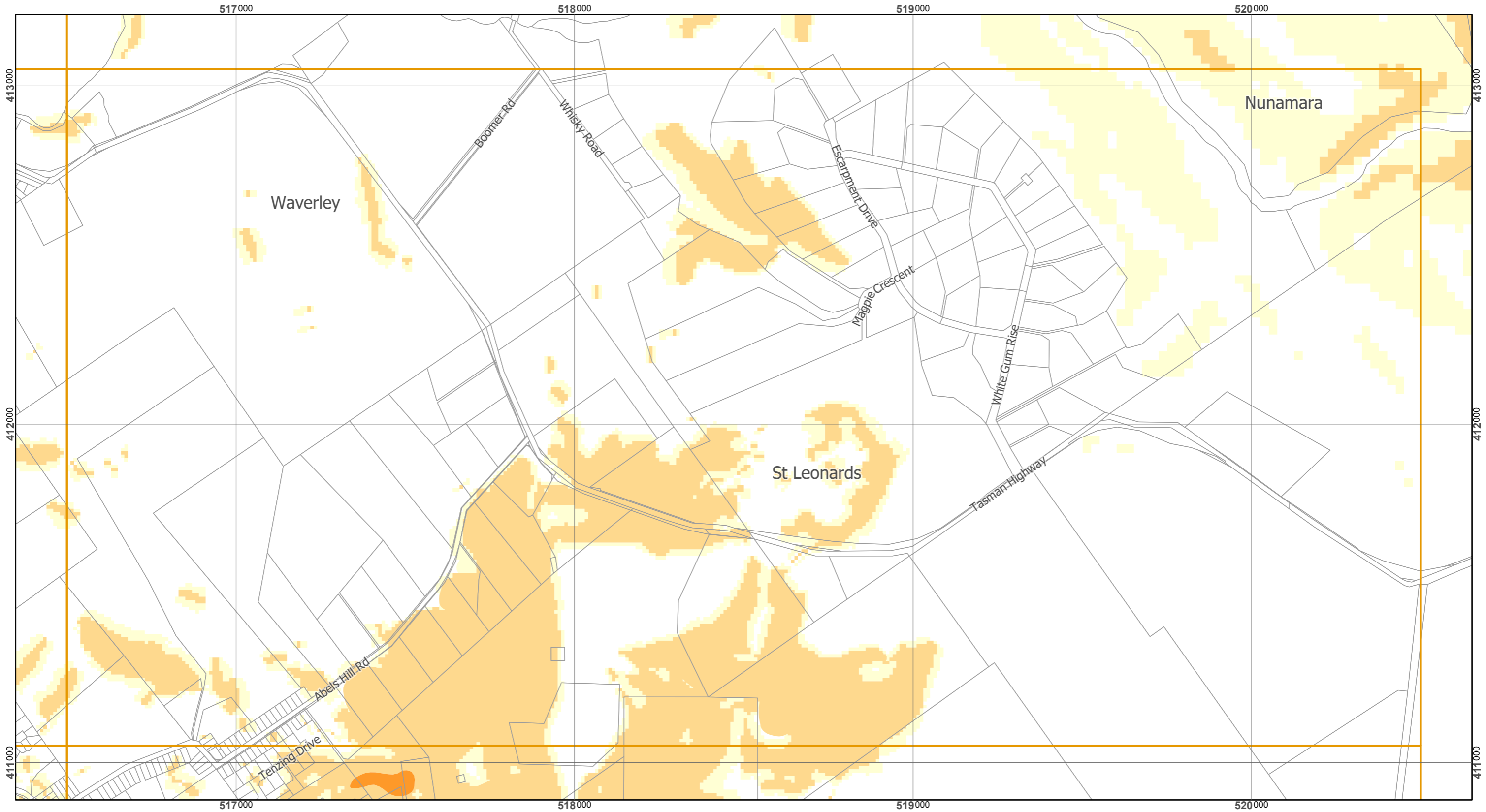
Coordinate System : GDA 94 MGA Zone 55  
 Zone data from Launceston City Council  
 Base Topographic data from LIST ©State of Tasmania

Print date : 29/08/2019



## Urban

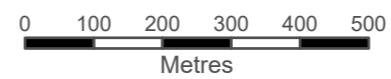
# Tasmanian Planning Scheme - Launceston LPS: Landslip Hazard Overlay Map



## Legend

- Low landslip hazard
- Medium landslip hazard
- Medium-active landslip hazard
- High landslip hazard

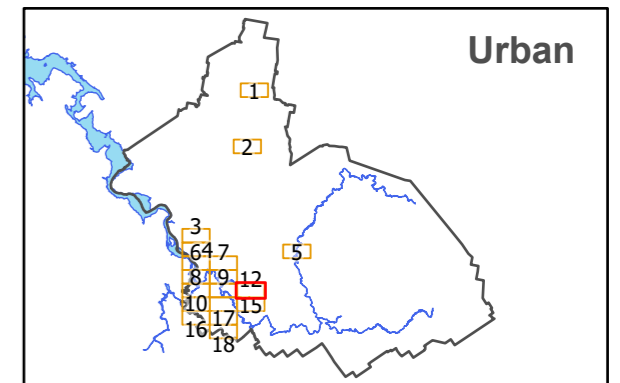
## Map 12 of 18 (Urban)



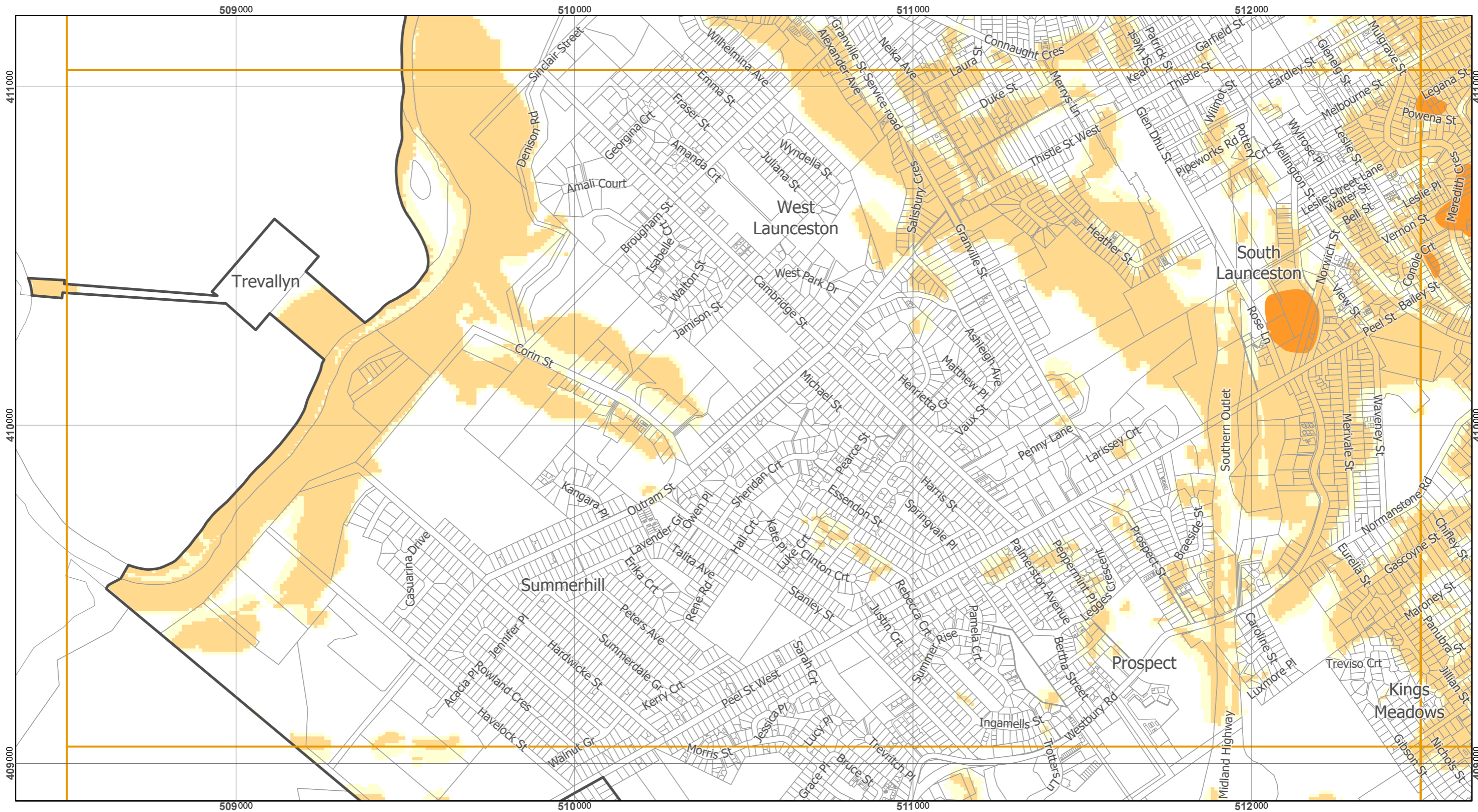
Scale at A3 : 1:11,000

Coordinate System : GDA 94 MGA Zone 55  
Zone data from Launceston City Council  
Base Topographic data from LIST ©State of Tasmania

Print date : 29/08/2019



# Tasmanian Planning Scheme - Launceston LPS: Landslip Hazard Overlay Map



## Legend

- Low landslip hazard
- Medium landslip hazard
- Medium-active landslip hazard
- High landslip hazard

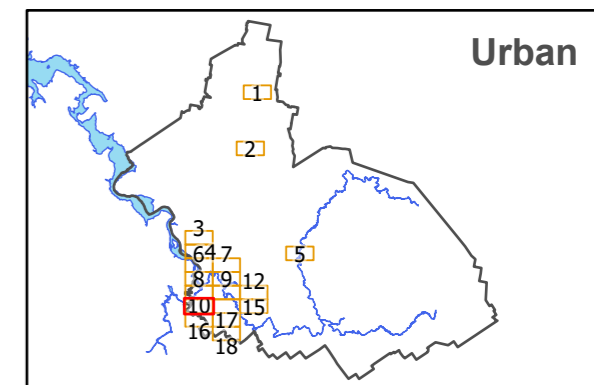
## Map 13 of 18 (Urban)



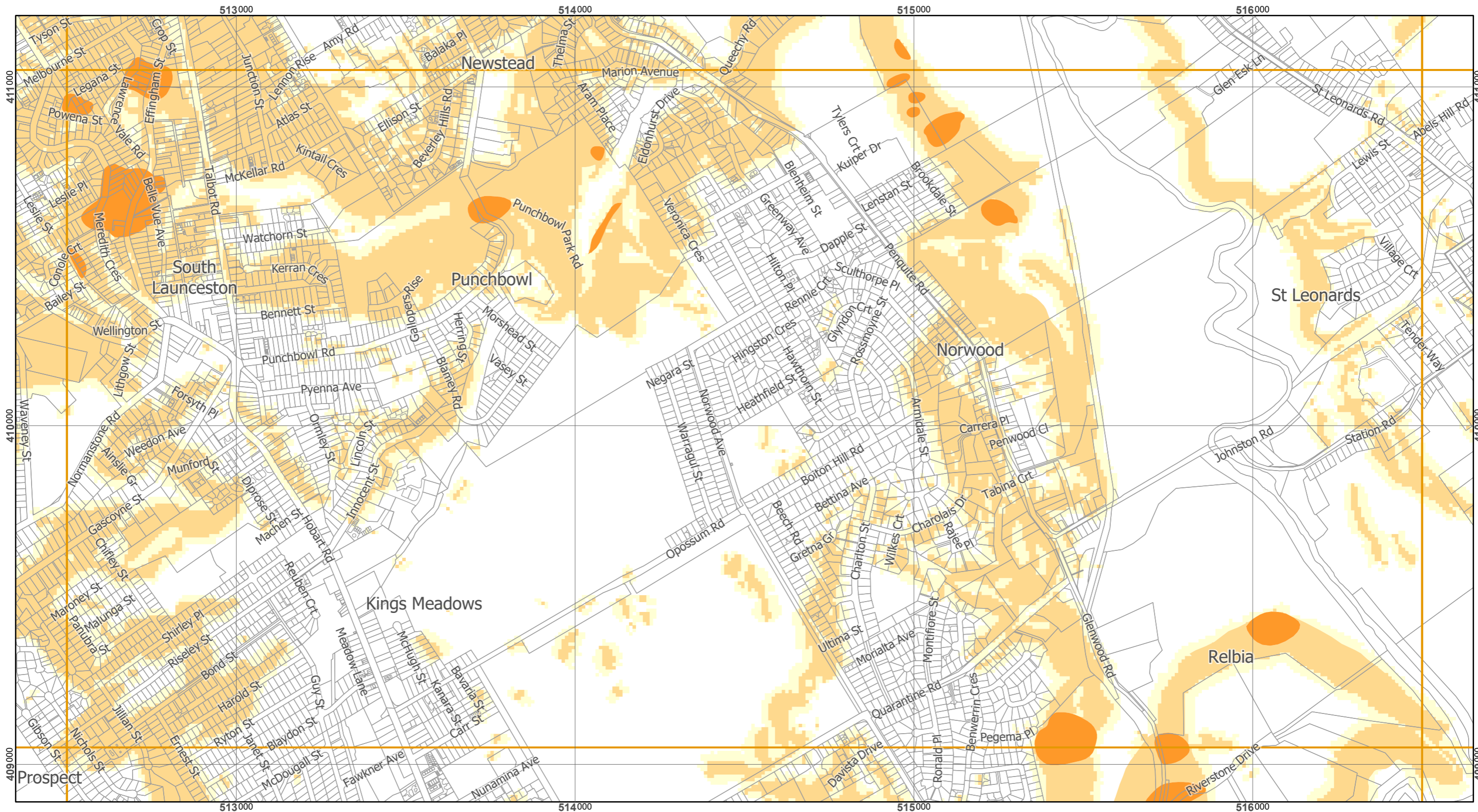
Scale at A3 : 1:11,000

Coordinate System : GDA 94 MGA Zone 55  
 Zone data from Launceston City Council  
 Base Topographic data from LIST ©State of Tasmania

Print date : 29/08/2019



# Tasmanian Planning Scheme - Launceston LPS: Landslip Hazard Overlay Map



## Legend

- Low landslip hazard
- Medium landslip hazard
- Medium-active landslip hazard
- High landslip hazard

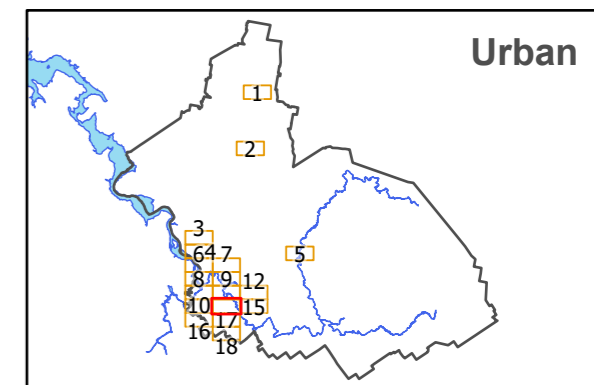
## Map 14 of 18 (Urban)



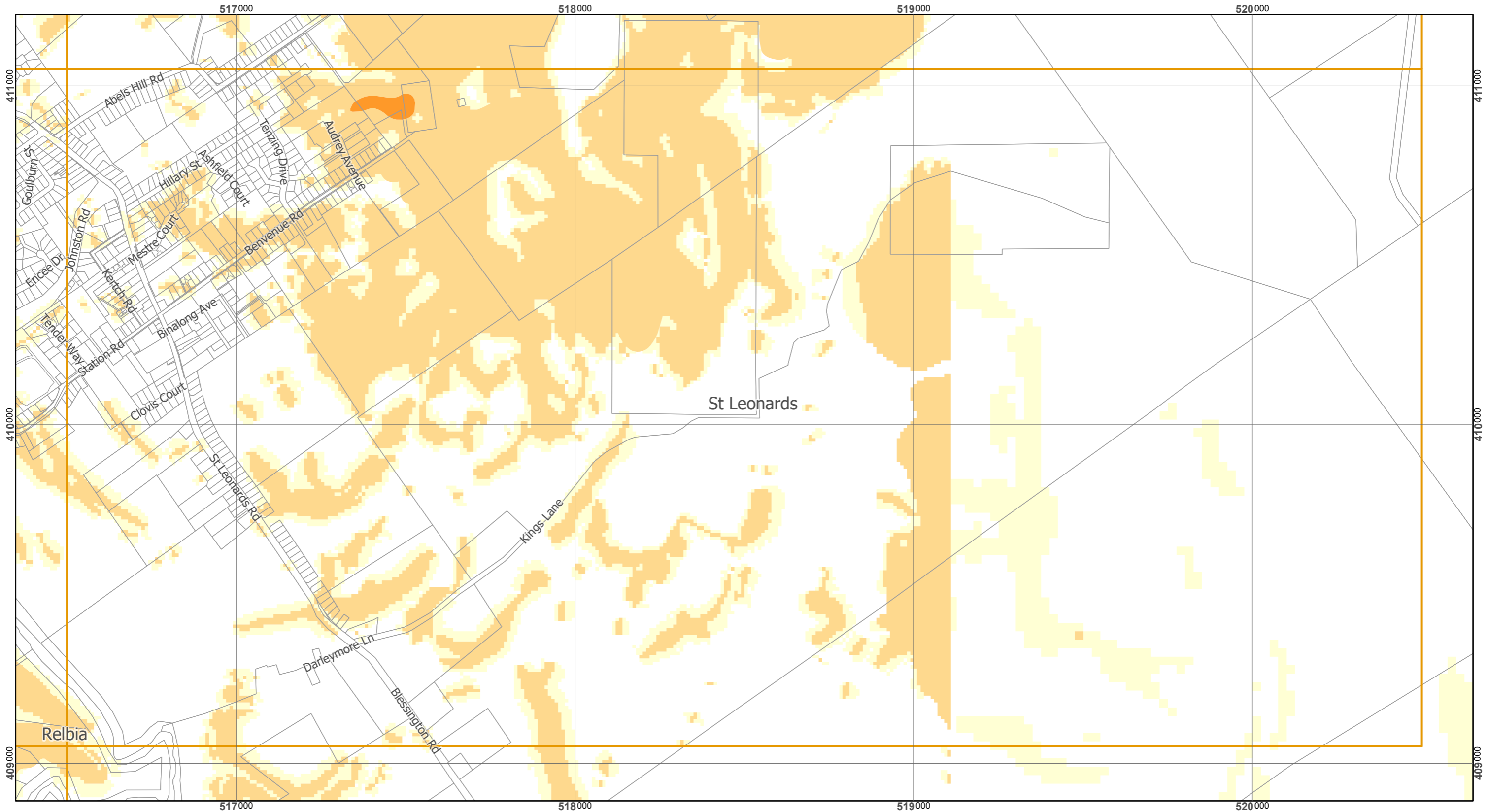
Scale at A3 : 1:11,000

Coordinate System : GDA 94 MGA Zone 55  
 Zone data from Launceston City Council  
 Base Topographic data from LIST ©State of Tasmania

Print date : 29/08/2019



# Tasmanian Planning Scheme - Launceston LPS: Landslip Hazard Overlay Map



## Legend

- Low landslip hazard
- Medium landslip hazard
- Medium-active landslip hazard
- High landslip hazard

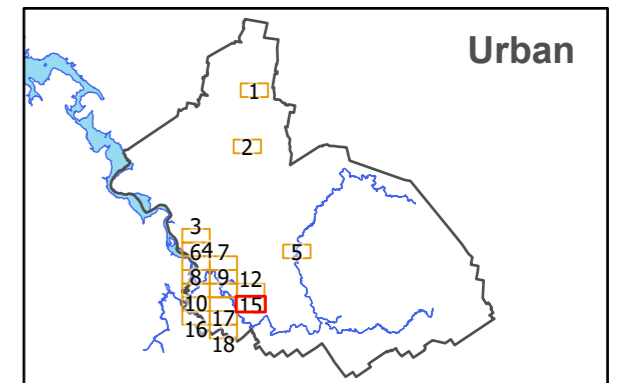
## Map 15 of 18 (Urban)



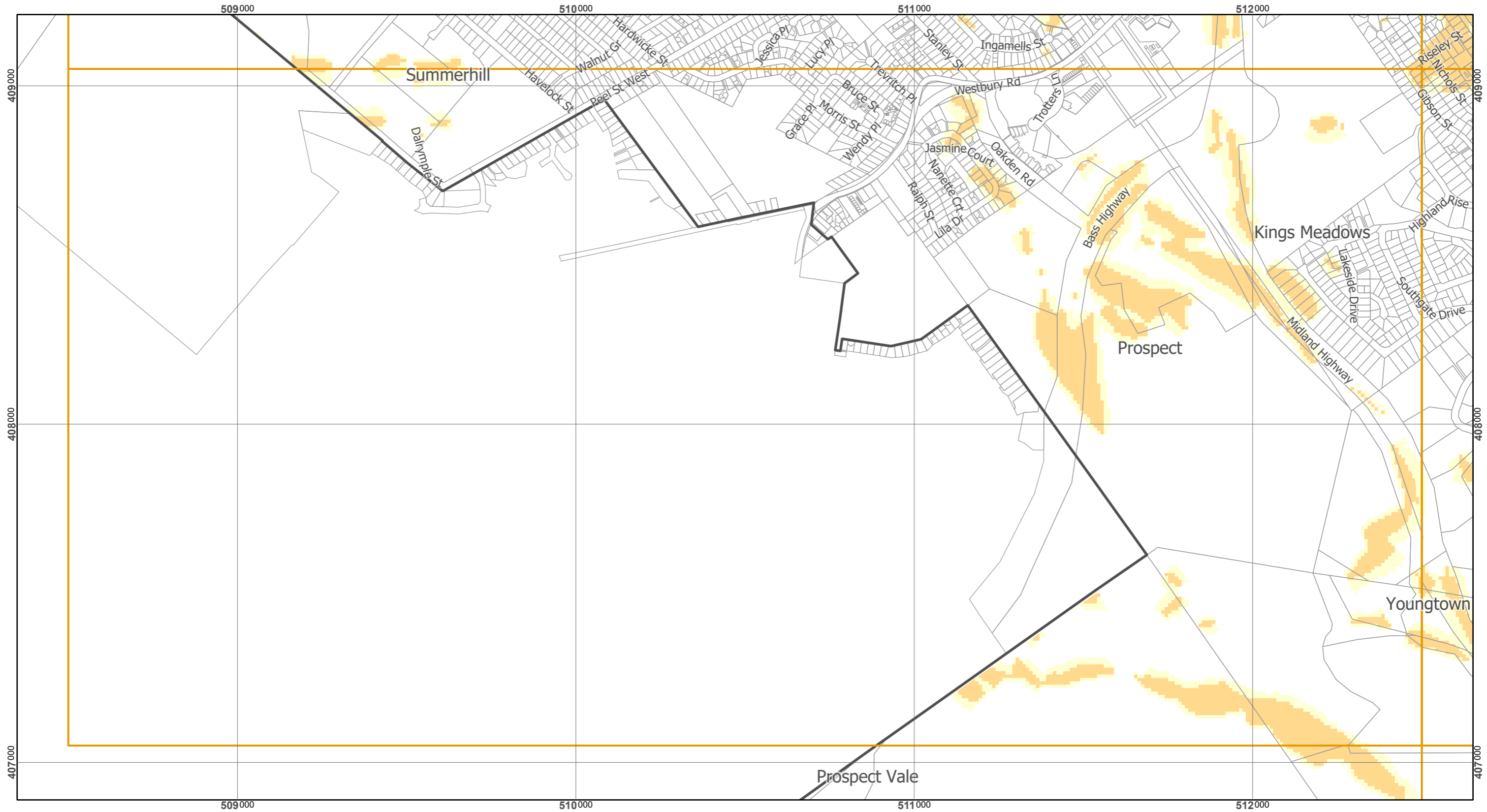
Scale at A3 : 1:11,000

Coordinate System : GDA 94 MGA Zone 55  
 Zone data from Launceston City Council  
 Base Topographic data from LIST ©State of Tasmania

Print date : 29/08/2019



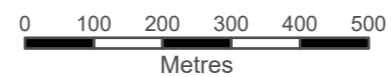
# Tasmanian Planning Scheme - Launceston LPS: Landslip Hazard Overlay Map



## Legend

- Low landslip hazard
- Medium landslip hazard
- Medium-active landslip hazard
- High landslip hazard

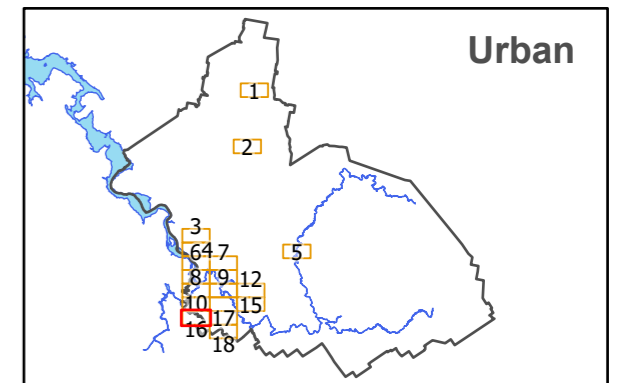
## Map 16 of 18 (Urban)



Scale at A3 : 1:11,000

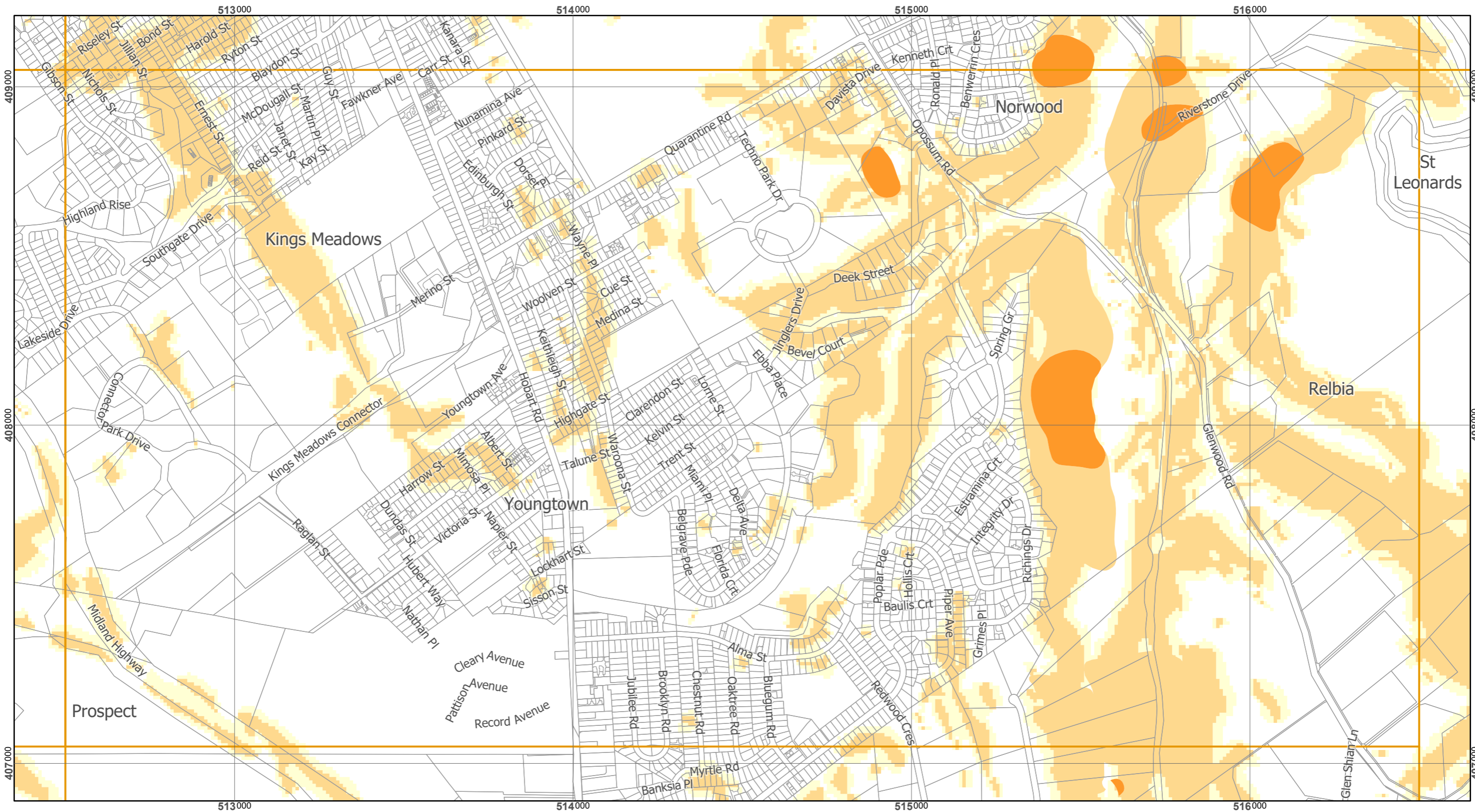
Coordinate System : GDA 94 MGA Zone 55  
 Zone data from Launceston City Council  
 Base Topographic data from LIST ©State of Tasmania

Print date : 29/08/2019





# Tasmanian Planning Scheme - Launceston LPS: Landslip Hazard Overlay Map



## Legend

- Low landslip hazard
- Medium landslip hazard
- Medium-active landslip hazard
- High landslip hazard

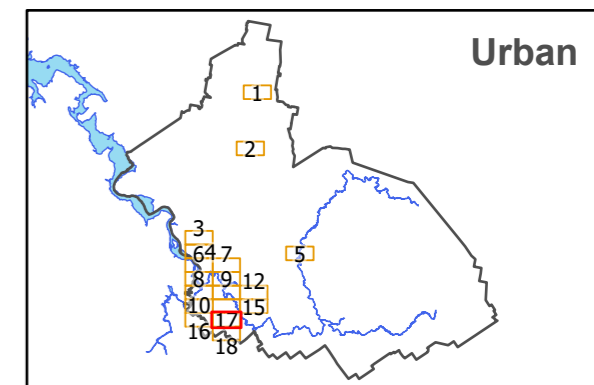
## Map 17 of 18 (Urban)



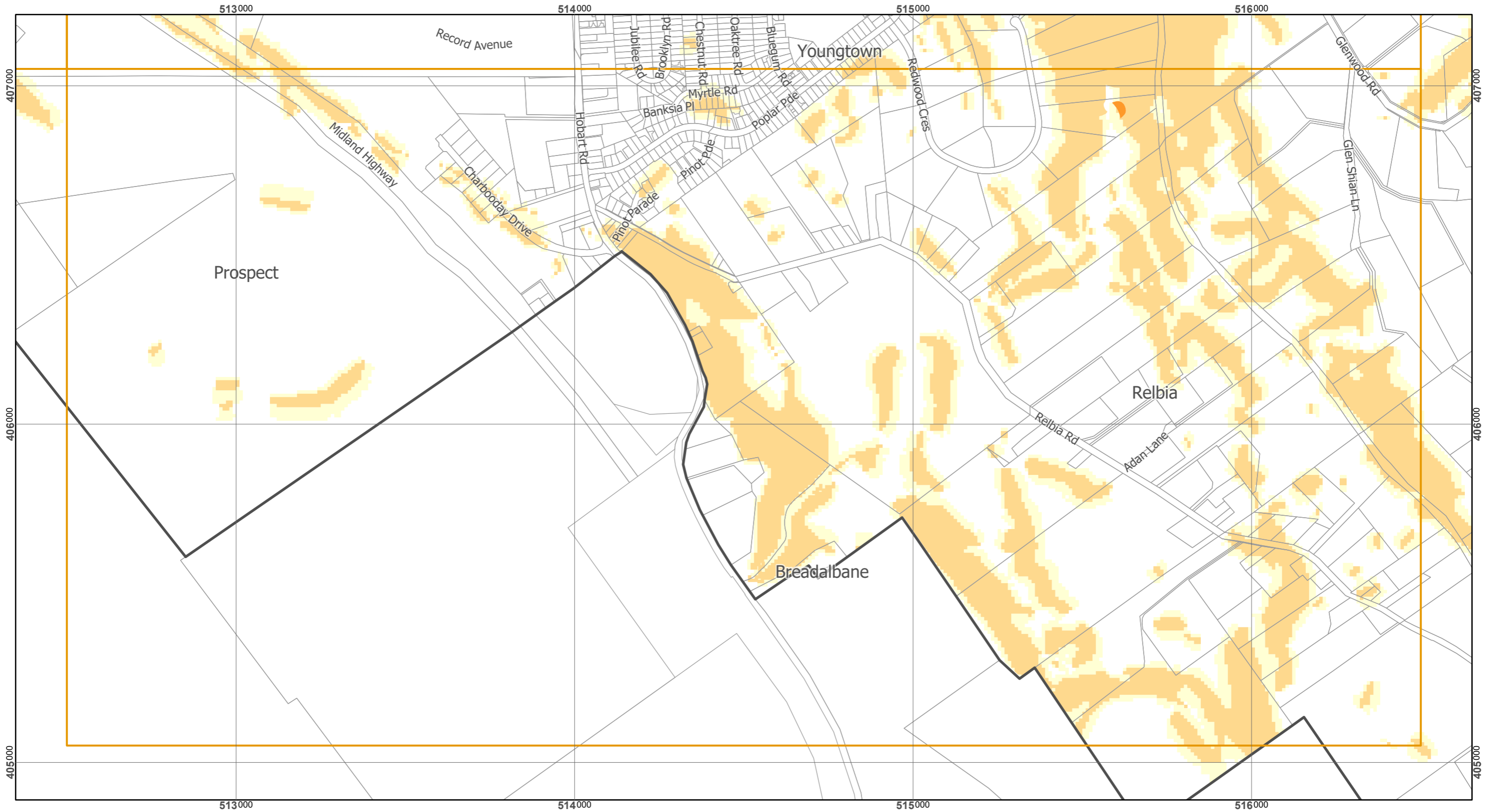
Scale at A3 : 1:11,000

Coordinate System : GDA 94 MGA Zone 55  
 Zone data from Launceston City Council  
 Base Topographic data from LIST ©State of Tasmania

Print date : 29/08/2019



# Tasmanian Planning Scheme - Launceston LPS: Landslip Hazard Overlay Map



## Legend

- Low landslip hazard
- Medium landslip hazard
- Medium-active landslip hazard
- High landslip hazard

## Map 18 of 18 (Urban)



Scale at A3 : 1:11,000

Coordinate System : GDA 94 MGA Zone 55  
Zone data from Launceston City Council  
Base Topographic data from LIST ©State of Tasmania

Print date : 29/08/2019

