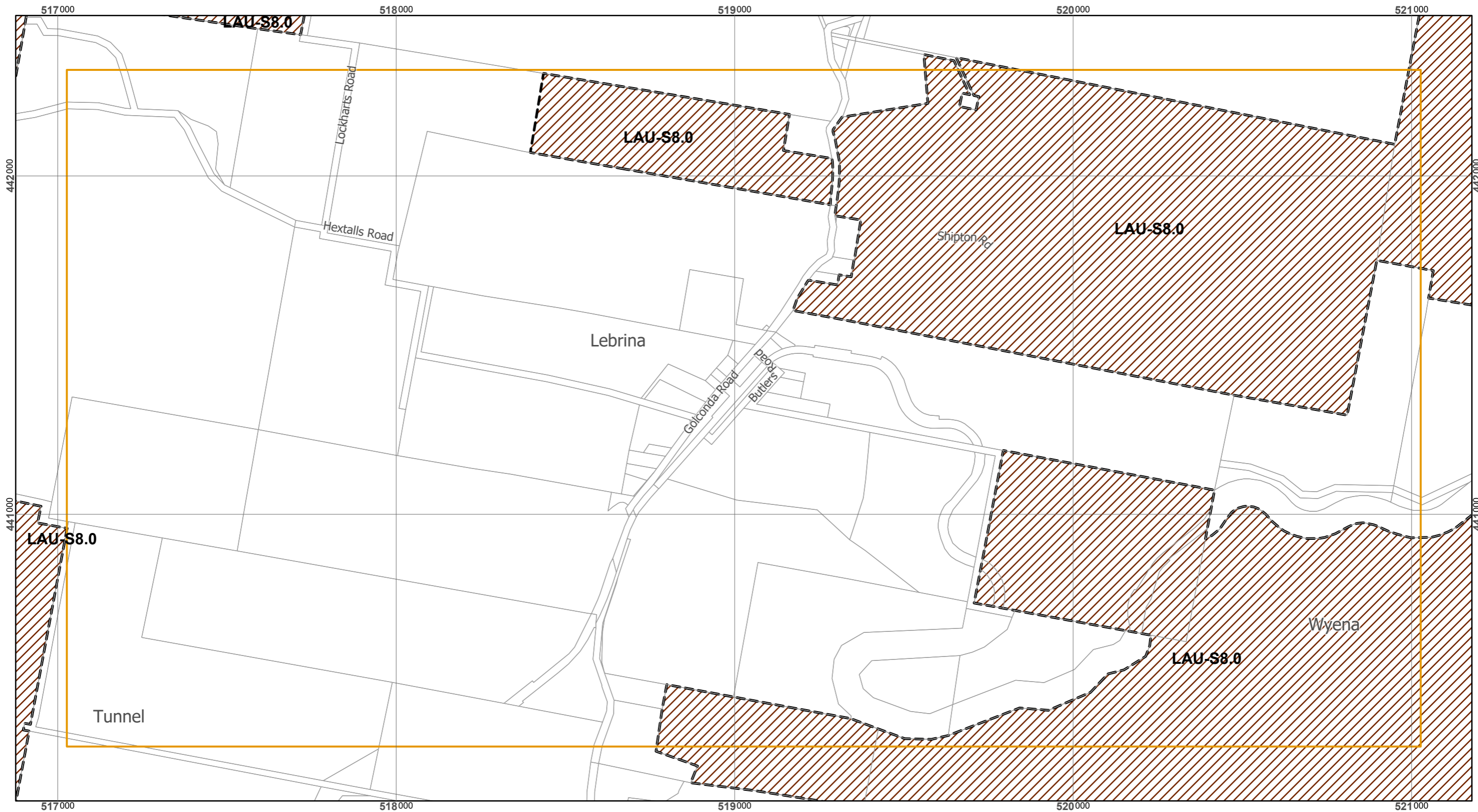
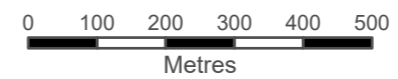


Tasmanian Planning Scheme - Launceston LPS: Specific Area Plans and Site-specific Qualifications



Site Specific Qualifications	LAU-S6.0 Relbia and Glenwood Road	LAU-S12.0 Development Potential
LAU-S1.0 Mount Stuart Drive	LAU-S7.0 Cataract Gorge Subdivision	LAU-S13.0 Western Hillside
LAU-S2.0 The Green	LAU-S8.0 Forestry Area	LAU-S14.0 Southern Gateway
LAU-S3.0 Raglan Street	LAU-S9.0 Launceston Plaza Retail	LAU-S15.0 Central Area
LAU-S4.0 Hillary Street	LAU-S10.0 Invermay/Inveresk Flood Inundation	LAU-S16.0 Rural Conservation
LAU-S5.0 Drivers Run	LAU-S11.0 Cataract Gorge Management	

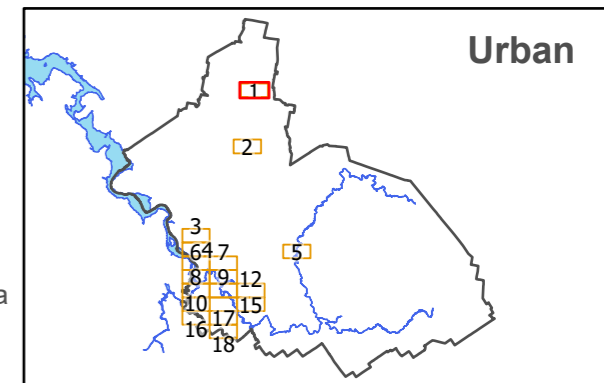
Map 1 of 18 (Urban)



Scale at A3 : 1:11,000

Coordinate System : GDA 94 MGA Zone 55
 Zone data from Launceston City Council
 Base Topographic data from LIST ©State of Tasmania

Print date : 29/08/2019



Tasmanian Planning Scheme - Launceston LPS: Specific Area Plans and Site-specific Qualifications



Site Specific Qualifications	LAU-S6.0 Relbia and Glenwood Road	LAU-S12.0 Development Potential
LAU-S1.0 Mount Stuart Drive	LAU-S7.0 Cataract Gorge Subdivision	LAU-S13.0 Western Hillside
LAU-S2.0 The Green	LAU-S8.0 Forestry Area	LAU-S14.0 Southern Gateway
LAU-S3.0 Raglan Street	LAU-S9.0 Launceston Plaza Retail	LAU-S15.0 Central Area
LAU-S4.0 Hillary Street	LAU-S10.0 Invermay/Inveresk Flood Inundation	LAU-S16.0 Rural Conservation
LAU-S5.0 Drivers Run	LAU-S11.0 Cataract Gorge Management	

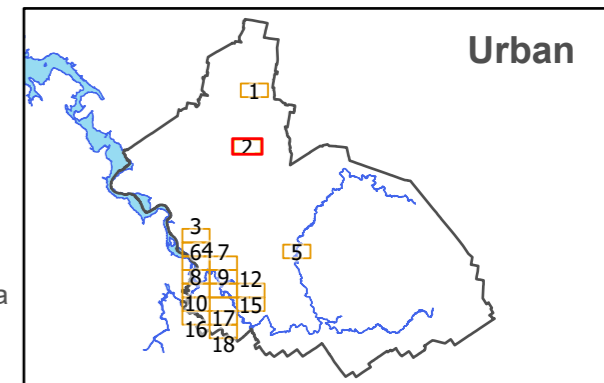
Map 2 of 18 (Urban)



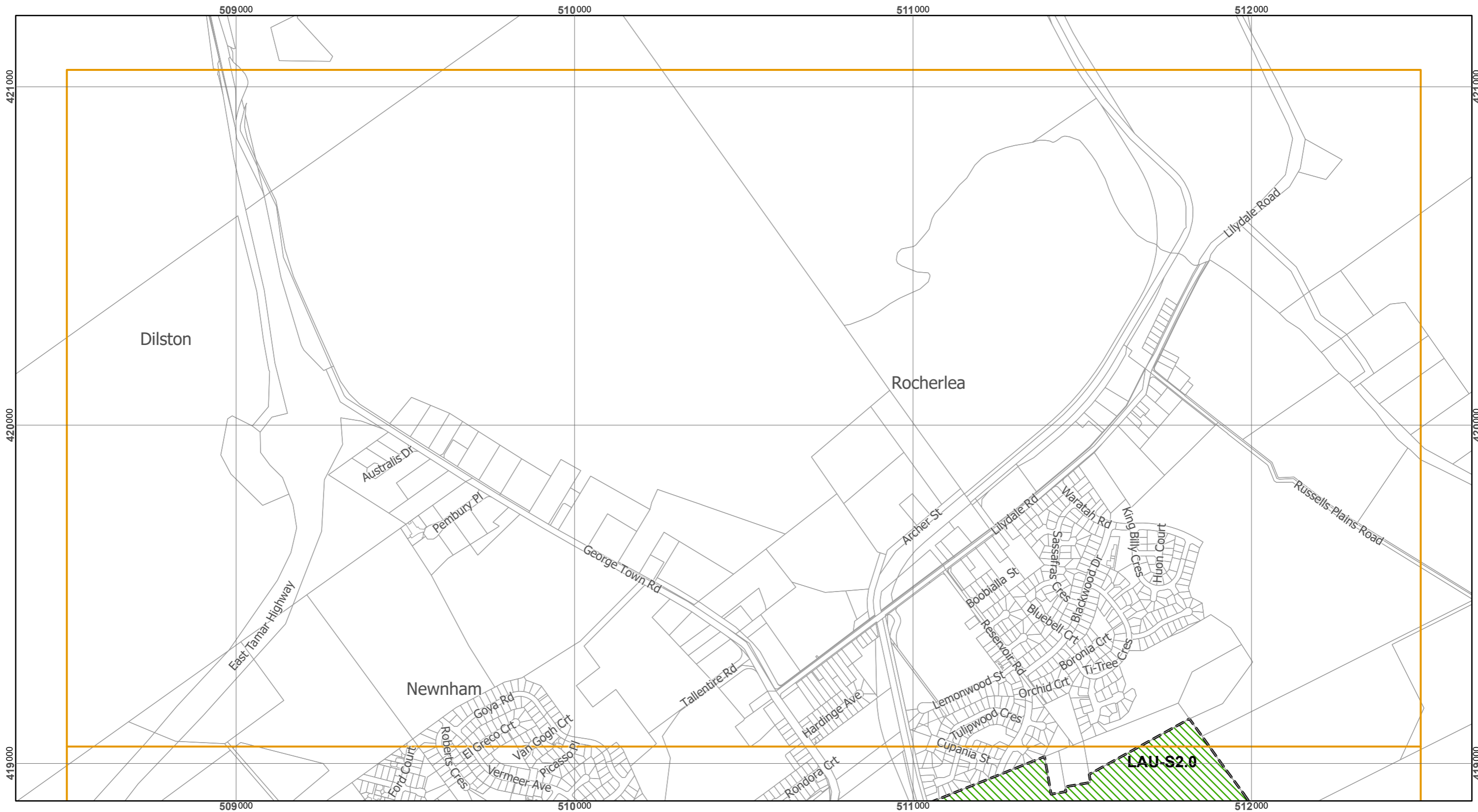
Scale at A3 : 1:11,000

Coordinate System : GDA 94 MGA Zone 55
 Zone data from Launceston City Council
 Base Topographic data from LIST ©State of Tasmania

Print date : 29/08/2019



Tasmanian Planning Scheme - Launceston LPS: Specific Area Plans and Site-specific Qualifications



	Site Specific Qualifications		LAU-S6.0 Relbia and Glenwood Road		LAU-S12.0 Development Potential
	LAU-S1.0 Mount Stuart Drive		LAU-S7.0 Cataract Gorge Subdivision		LAU-S13.0 Western Hillside
	LAU-S2.0 The Green		LAU-S8.0 Forestry Area		LAU-S14.0 Southern Gateway
	LAU-S3.0 Raglan Street		LAU-S9.0 Launceston Plaza Retail		LAU-S15.0 Central Area
	LAU-S4.0 Hillary Street		LAU-S10.0 Invermay/Inveresk Flood Inundation		LAU-S16.0 Rural Conservation
	LAU-S5.0 Drivers Run		LAU-S11.0 Cataract Gorge Management		

Map 3 of 18 (Urban)

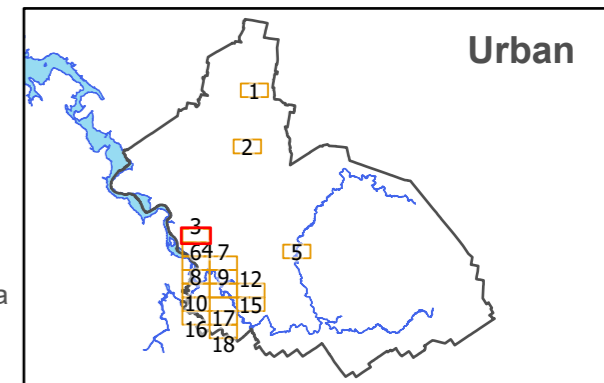


Scale at A3 : 1:11,000

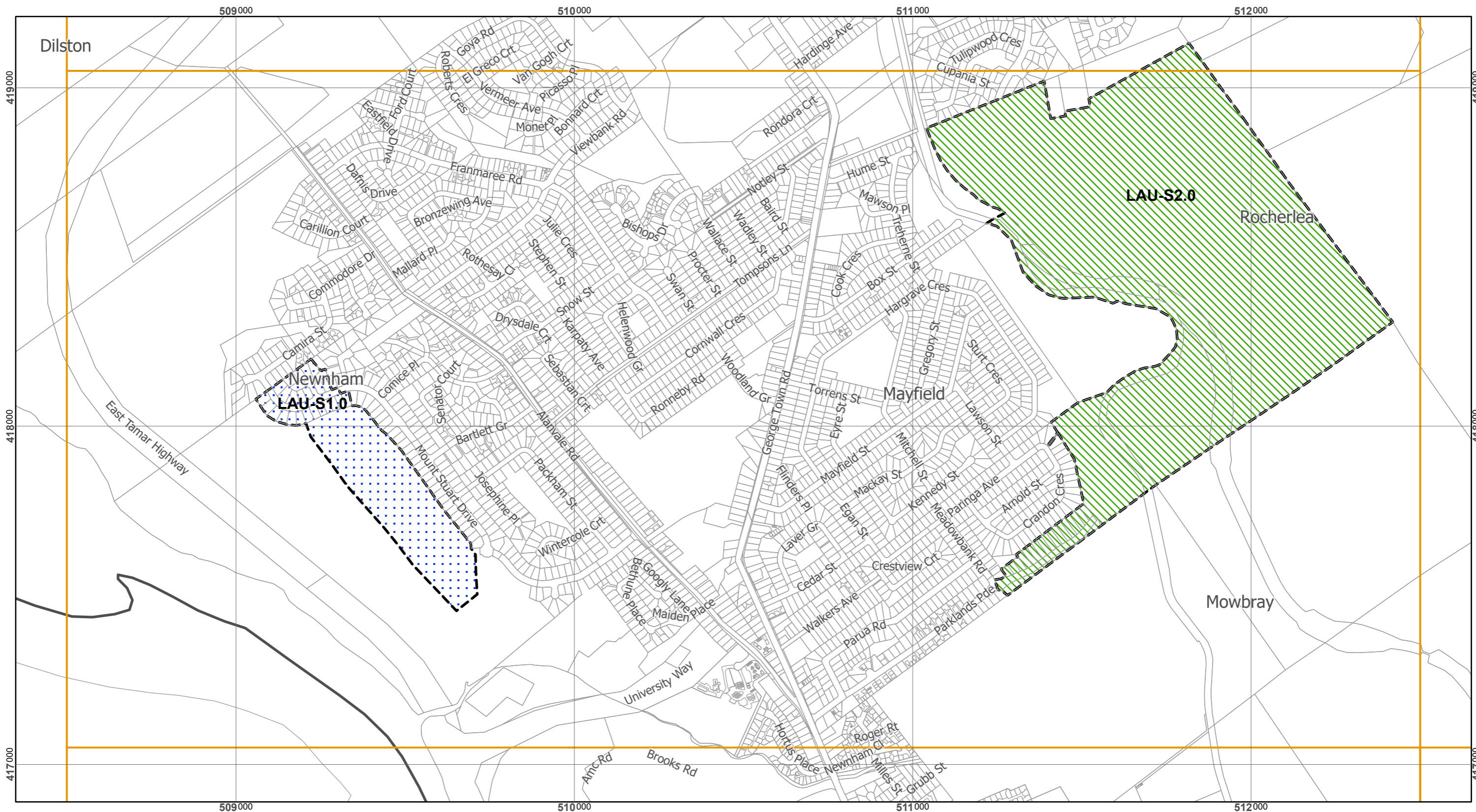


Coordinate System : GDA 94 MGA Zone 55
 Zone data from Launceston City Council
 Base Topographic data from LIST ©State of Tasmania

Print date : 29/08/2019



Tasmanian Planning Scheme - Launceston LPS: Specific Area Plans and Site-specific Qualifications



Site Specific Qualifications	LAU-S6.0 Relbia and Glenwood Road	LAU-S12.0 Development Potential
LAU-S1.0 Mount Stuart Drive	LAU-S7.0 Cataract Gorge Subdivision	LAU-S13.0 Western Hillside
LAU-S2.0 The Green	LAU-S8.0 Forestry Area	LAU-S14.0 Southern Gateway
LAU-S3.0 Raglan Street	LAU-S9.0 Launceston Plaza Retail	LAU-S15.0 Central Area
LAU-S4.0 Hillary Street	LAU-S10.0 Invermay/Inveresk Flood Inundation	LAU-S16.0 Rural Conservation
LAU-S5.0 Drivers Run	LAU-S11.0 Cataract Gorge Management	

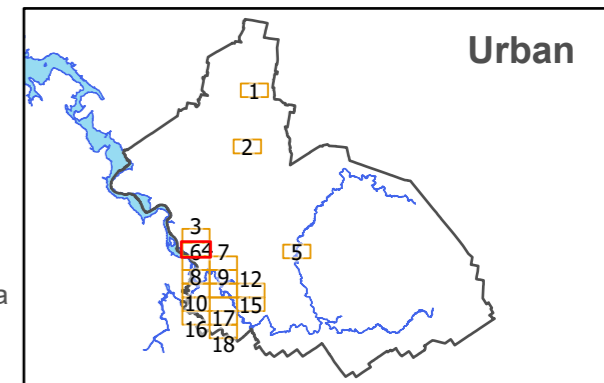
Map 4 of 18 (Urban)



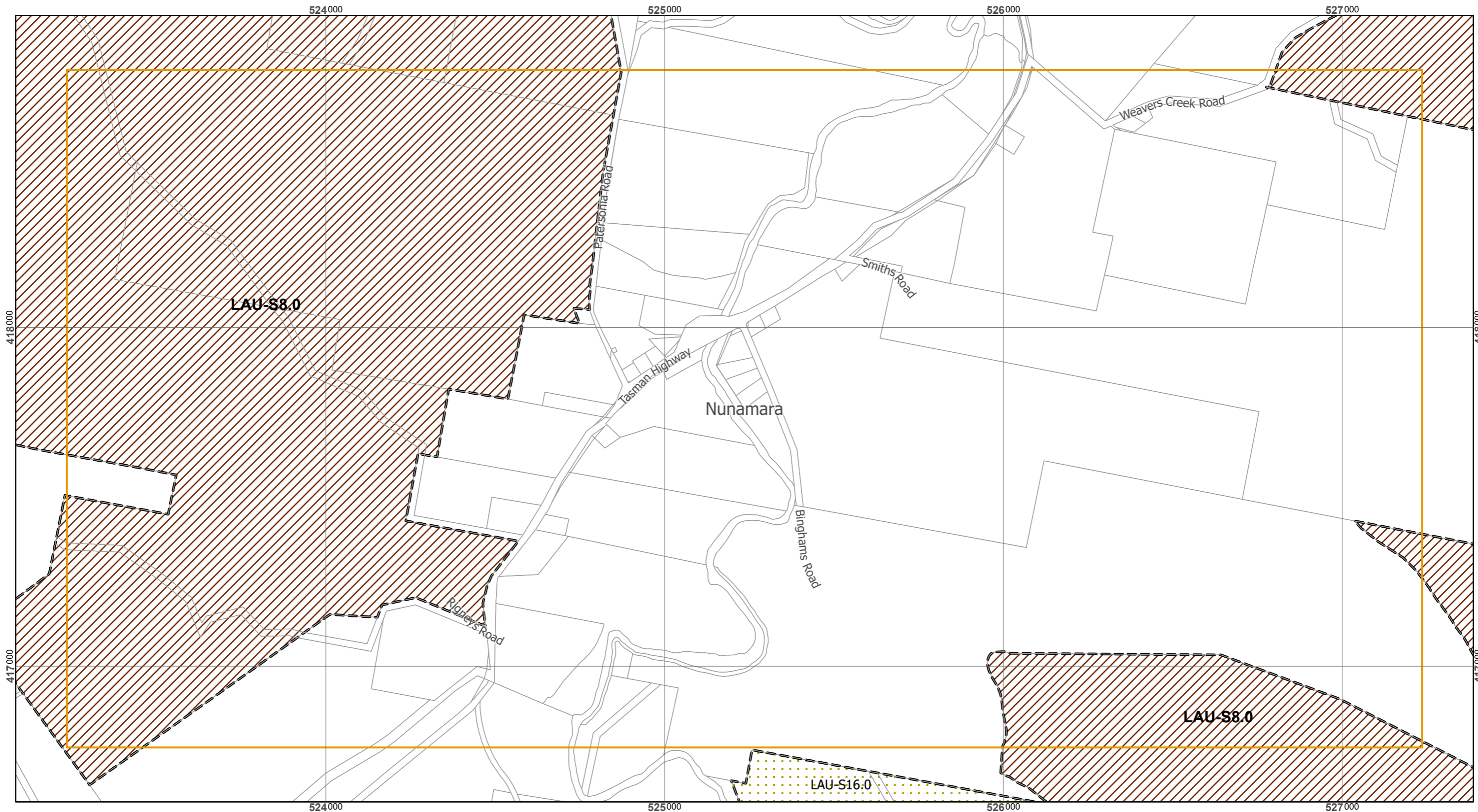
Scale at A3 : 1:11,000

Coordinate System : GDA 94 MGA Zone 55
Zone data from Launceston City Council
Base Topographic data from LIST ©State of Tasmania

Print date : 29/08/2019



Tasmanian Planning Scheme - Launceston LPS: Specific Area Plans and Site-specific Qualifications



Site Specific Qualifications	LAU-S6.0 Relbia and Glenwood Road	LAU-S12.0 Development Potential
LAU-S1.0 Mount Stuart Drive	LAU-S7.0 Cataract Gorge Subdivision	LAU-S13.0 Western Hillside
LAU-S2.0 The Green	LAU-S8.0 Forestry Area	LAU-S14.0 Southern Gateway
LAU-S3.0 Raglan Street	LAU-S9.0 Launceston Plaza Retail	LAU-S15.0 Central Area
LAU-S4.0 Hillary Street	LAU-S10.0 Invermay/Inveresk Flood Inundation	LAU-S16.0 Rural Conservation
LAU-S5.0 Drivers Run	LAU-S11.0 Cataract Gorge Management	

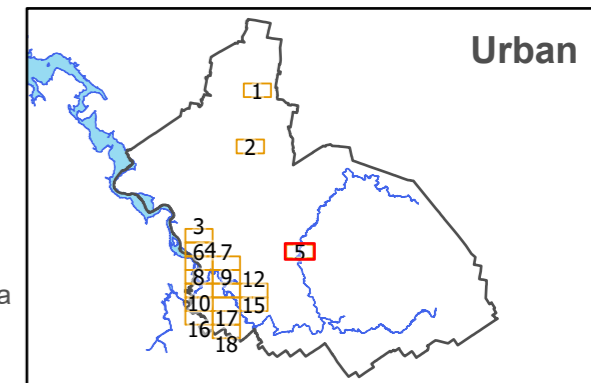
Map 5 of 18 (Urban)



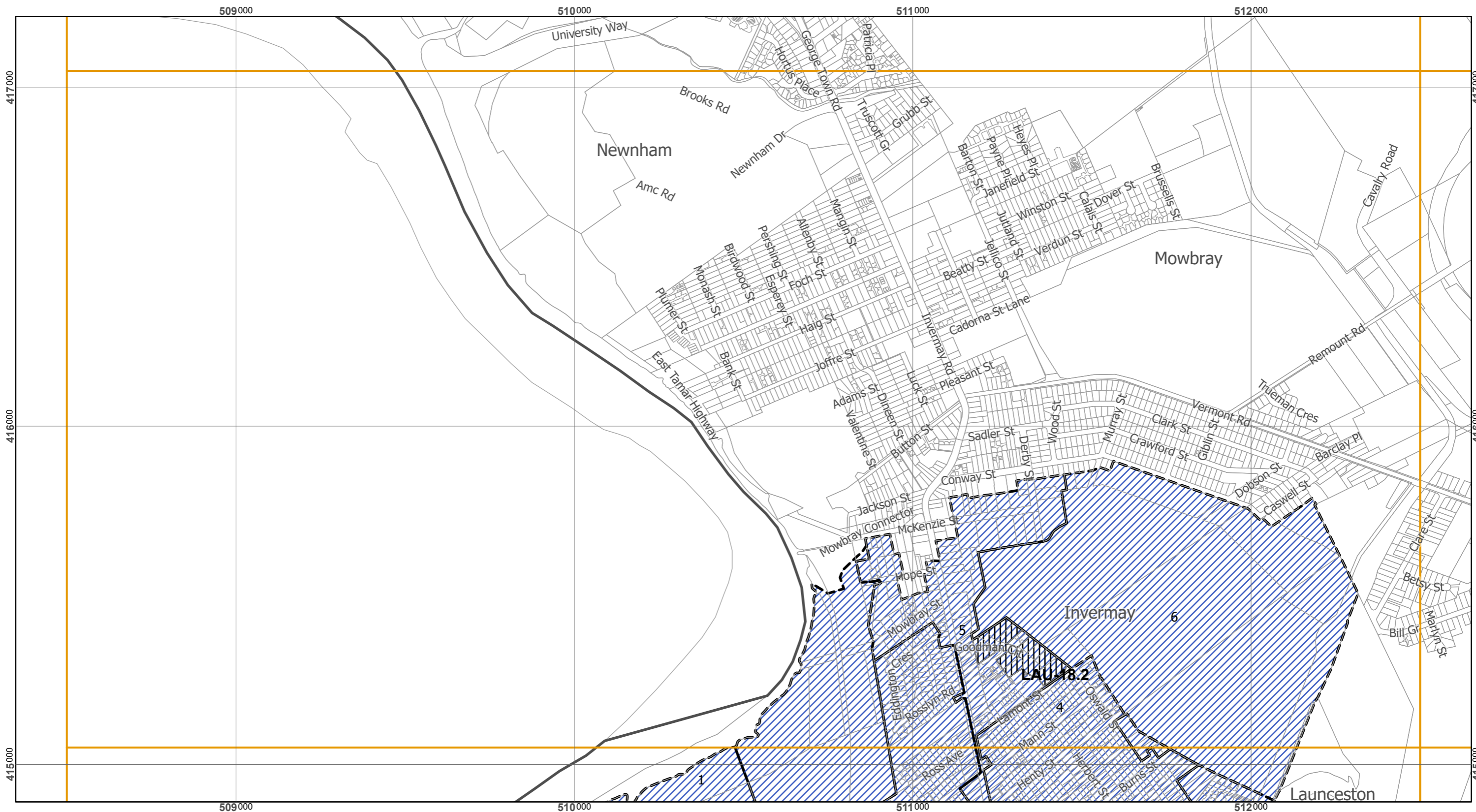
Scale at A3 : 1:11,000

Coordinate System : GDA 94 MGA Zone 55
 Zone data from Launceston City Council
 Base Topographic data from LIST ©State of Tasmania

Print date : 29/08/2019



Tasmanian Planning Scheme - Launceston LPS: Specific Area Plans and Site-specific Qualifications



Map 6 of 18 (Urban)

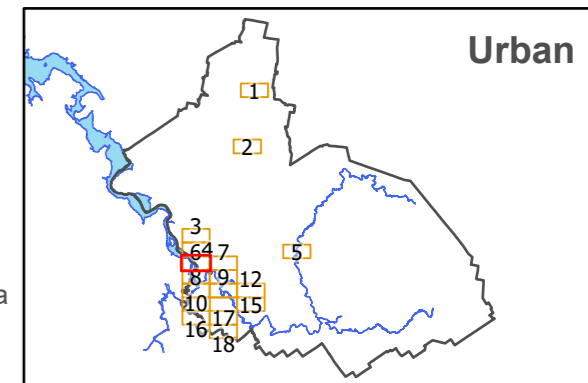


Scale at A3 : 1:11,000

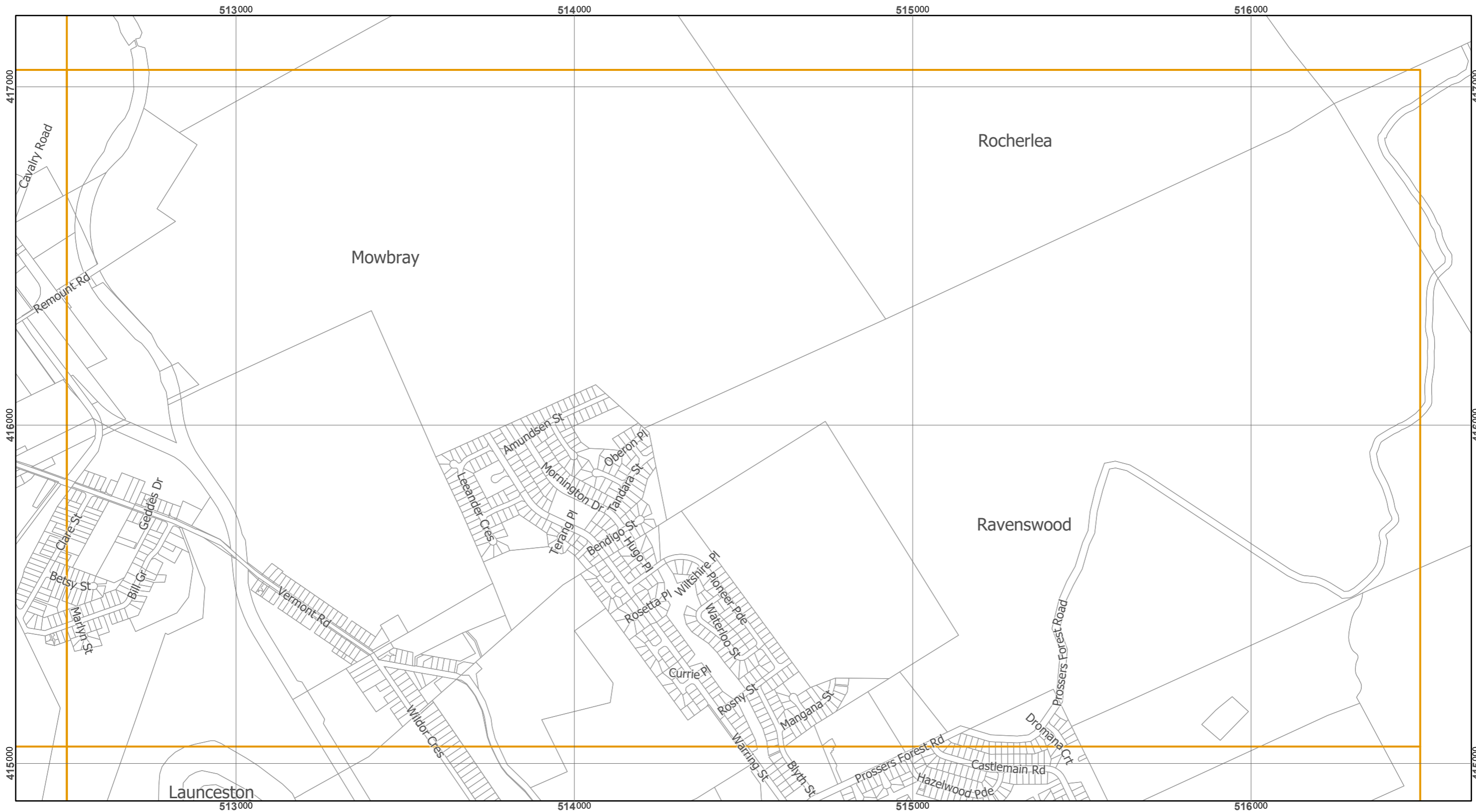


Coordinate System : GDA 94 MGA Zone 55
 Zone data from Launceston City Council
 Base Topographic data from LIST ©State of Tasmania

Print date : 29/08/2019



Tasmanian Planning Scheme - Launceston LPS: Specific Area Plans and Site-specific Qualifications



	Site Specific Qualifications		LAU-S6.0 Relbia and Glenwood Road		LAU-S12.0 Development Potential
	LAU-S1.0 Mount Stuart Drive		LAU-S7.0 Cataract Gorge Subdivision		LAU-S13.0 Western Hillside
	LAU-S2.0 The Green		LAU-S8.0 Forestry Area		LAU-S14.0 Southern Gateway
	LAU-S3.0 Raglan Street		LAU-S9.0 Launceston Plaza Retail		LAU-S15.0 Central Area
	LAU-S4.0 Hillary Street		LAU-S10.0 Invermay/Inveresk Flood Inundation		LAU-S16.0 Rural Conservation
	LAU-S5.0 Drivers Run		LAU-S11.0 Cataract Gorge Management		

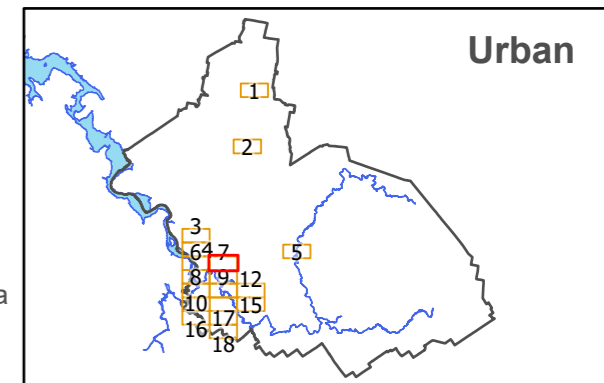
Map 7 of 18 (Urban)



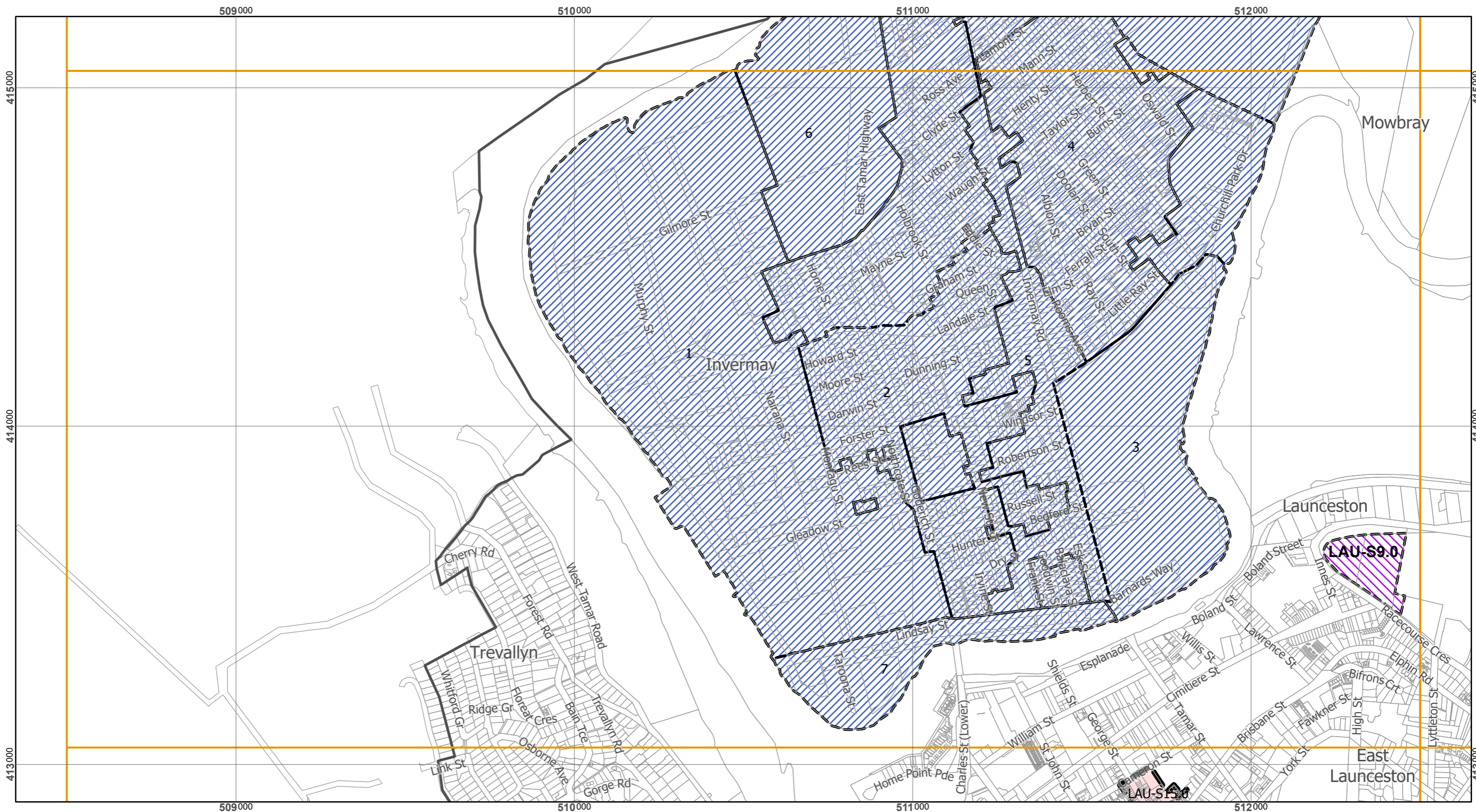
Scale at A3 : 1:11,000

Coordinate System : GDA 94 MGA Zone 55
 Zone data from Launceston City Council
 Base Topographic data from LIST ©State of Tasmania

Print date : 29/08/2019



Tasmanian Planning Scheme - Launceston LPS: Specific Area Plans and Site-specific Qualifications



Site Specific Qualifications	LAU-S6.0 Relbia and Glenwood Road	LAU-S12.0 Development Potential
LAU-S1.0 Mount Stuart Drive	LAU-S7.0 Cataract Gorge Subdivision	LAU-S13.0 Western Hillside
LAU-S2.0 The Green	LAU-S8.0 Forestry Area	LAU-S14.0 Southern Gateway
LAU-S3.0 Raglan Street	LAU-S9.0 Launceston Plaza Retail	LAU-S15.0 Central Area
LAU-S4.0 Hillary Street	LAU-S10.0 Invermay/Inveresk Flood Inundation	LAU-S16.0 Rural Conservation
LAU-S5.0 Drivers Run	LAU-S11.0 Cataract Gorge Management	

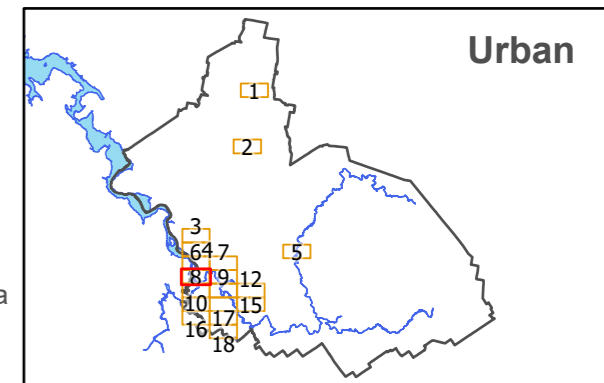
Map 8 of 18 (Urban)



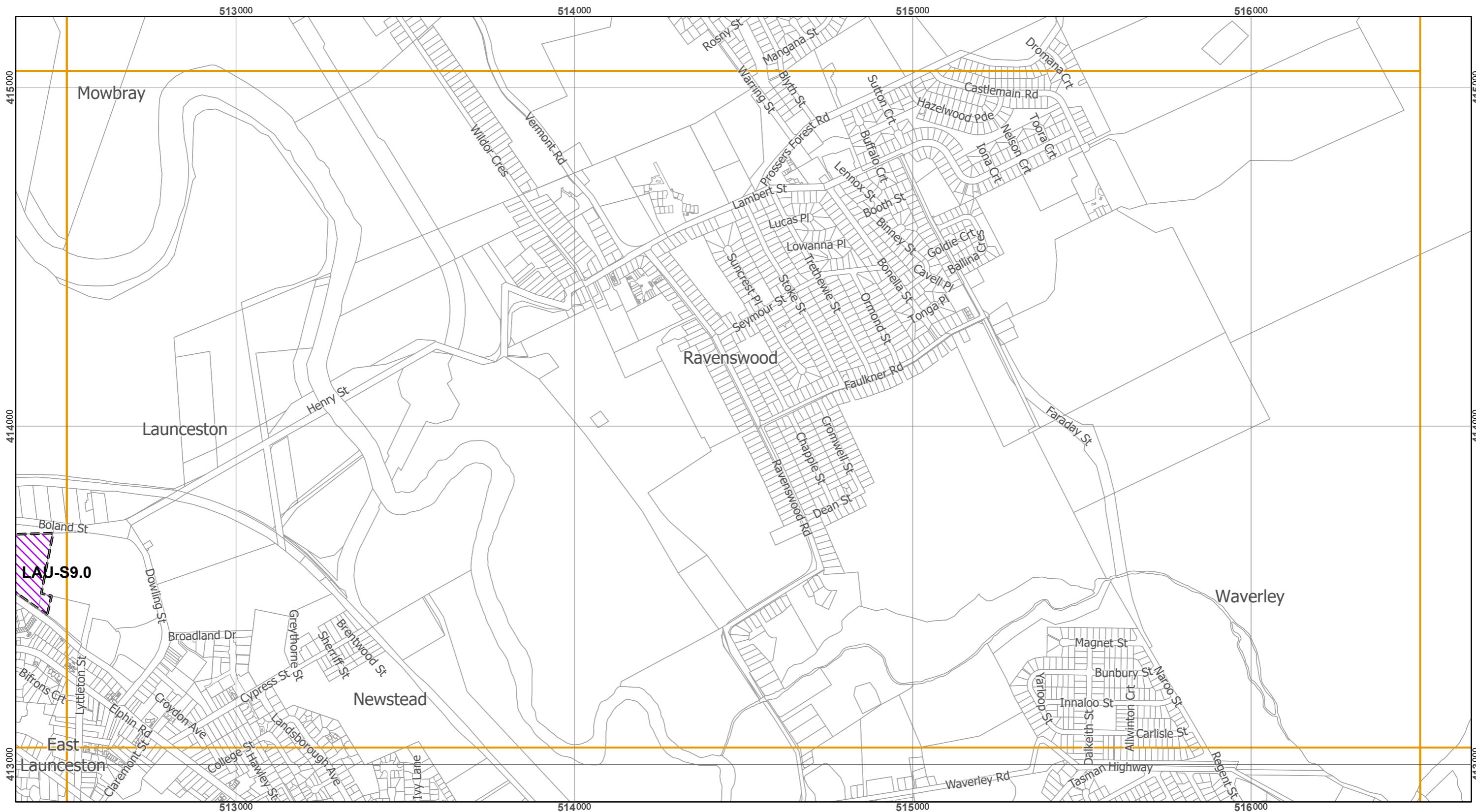
Scale at A3 : 1:11,000

Coordinate System : GDA 94 MGA Zone 55
 Zone data from Launceston City Council
 Base Topographic data from LIST ©State of Tasmania

Print date : 29/08/2019

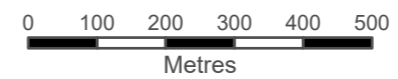


Tasmanian Planning Scheme - Launceston LPS: Specific Area Plans and Site-specific Qualifications



Site Specific Qualifications	LAU-S6.0 Relbia and Glenwood Road	LAU-S12.0 Development Potential
LAU-S1.0 Mount Stuart Drive	LAU-S7.0 Cataract Gorge Subdivision	LAU-S13.0 Western Hillside
LAU-S2.0 The Green	LAU-S8.0 Forestry Area	LAU-S14.0 Southern Gateway
LAU-S3.0 Raglan Street	LAU-S9.0 Launceston Plaza Retail	LAU-S15.0 Central Area
LAU-S4.0 Hillary Street	LAU-S10.0 Invermay/Inveresk Flood Inundation	LAU-S16.0 Rural Conservation
LAU-S5.0 Drivers Run	LAU-S11.0 Cataract Gorge Management	

Map 9 of 18 (Urban)

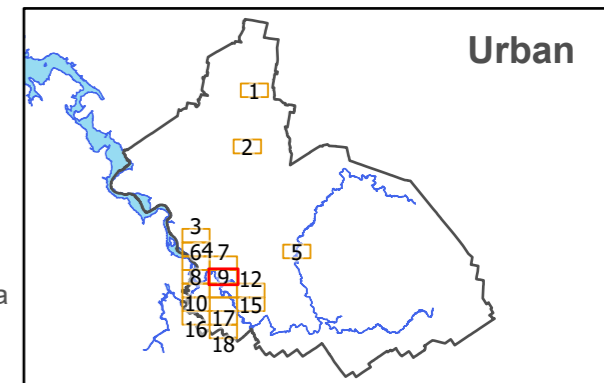


Scale at A3 : 1:11,000



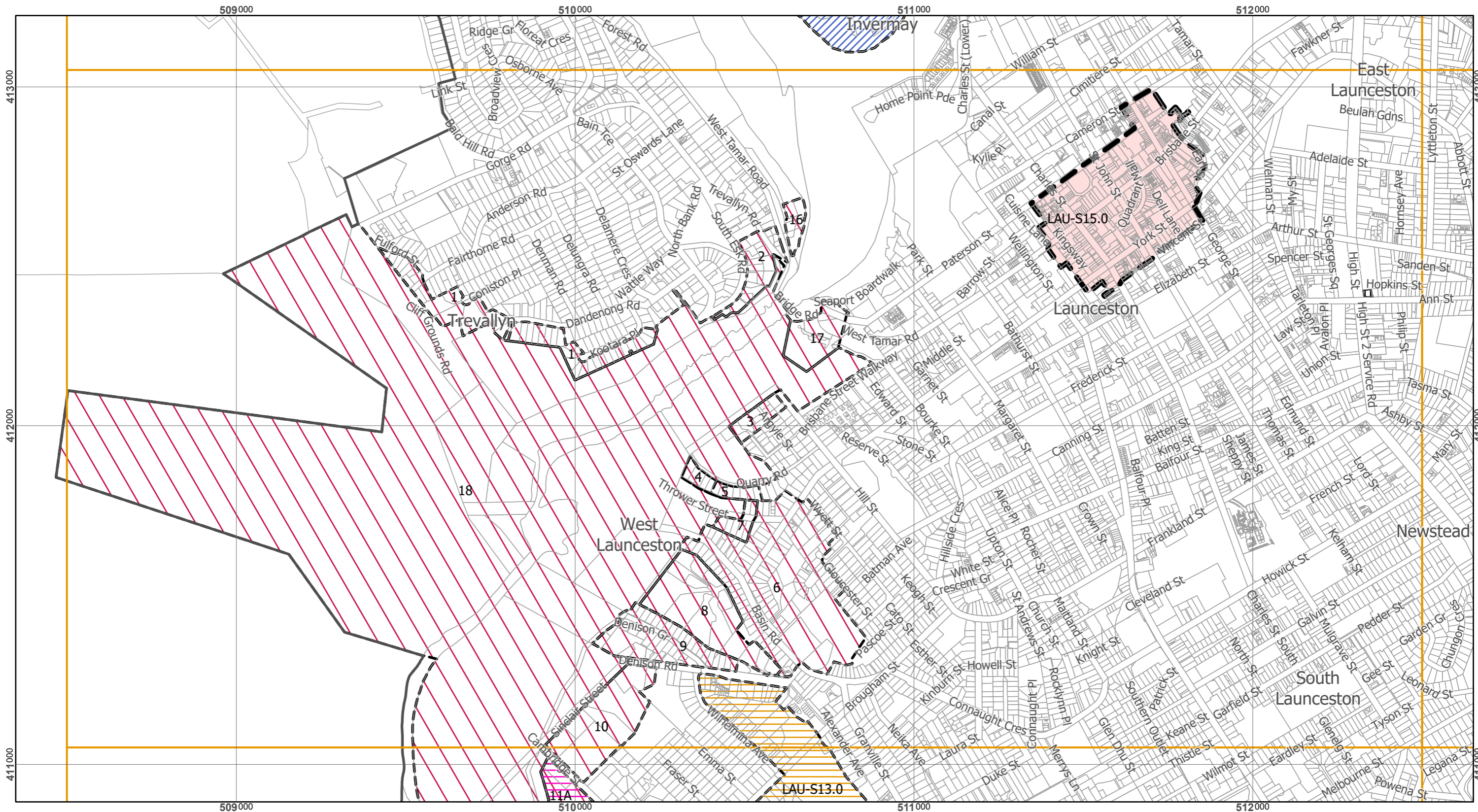
Coordinate System : GDA 94 MGA Zone 55
 Zone data from Launceston City Council
 Base Topographic data from LIST ©State of Tasmania

Print date : 29/08/2019



Urban

Tasmanian Planning Scheme - Launceston LPS: Specific Area Plans and Site-specific Qualifications



Site Specific Qualifications	LAU-S6.0 Relbia and Glenwood Road	LAU-S12.0 Development Potential
LAU-S1.0 Mount Stuart Drive	LAU-S7.0 Cataract Gorge Subdivision	LAU-S13.0 Western Hillside
LAU-S2.0 The Green	LAU-S8.0 Forestry Area	LAU-S14.0 Southern Gateway
LAU-S3.0 Raglan Street	LAU-S9.0 Launceston Plaza Retail	LAU-S15.0 Central Area
LAU-S4.0 Hillary Street	LAU-S10.0 Invermay/Inveresk Flood Inundation	LAU-S16.0 Rural Conservation
LAU-S5.0 Drivers Run	LAU-S11.0 Cataract Gorge Management	

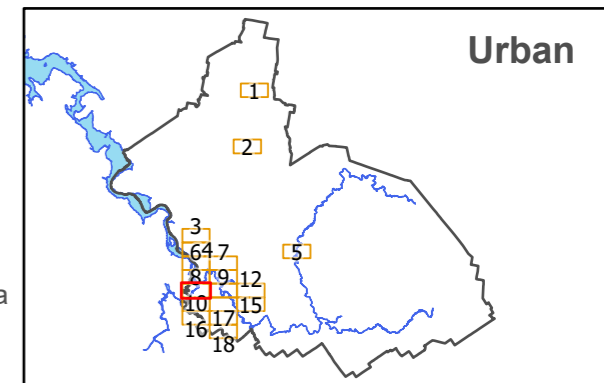
Map 10 of 18 (Urban)



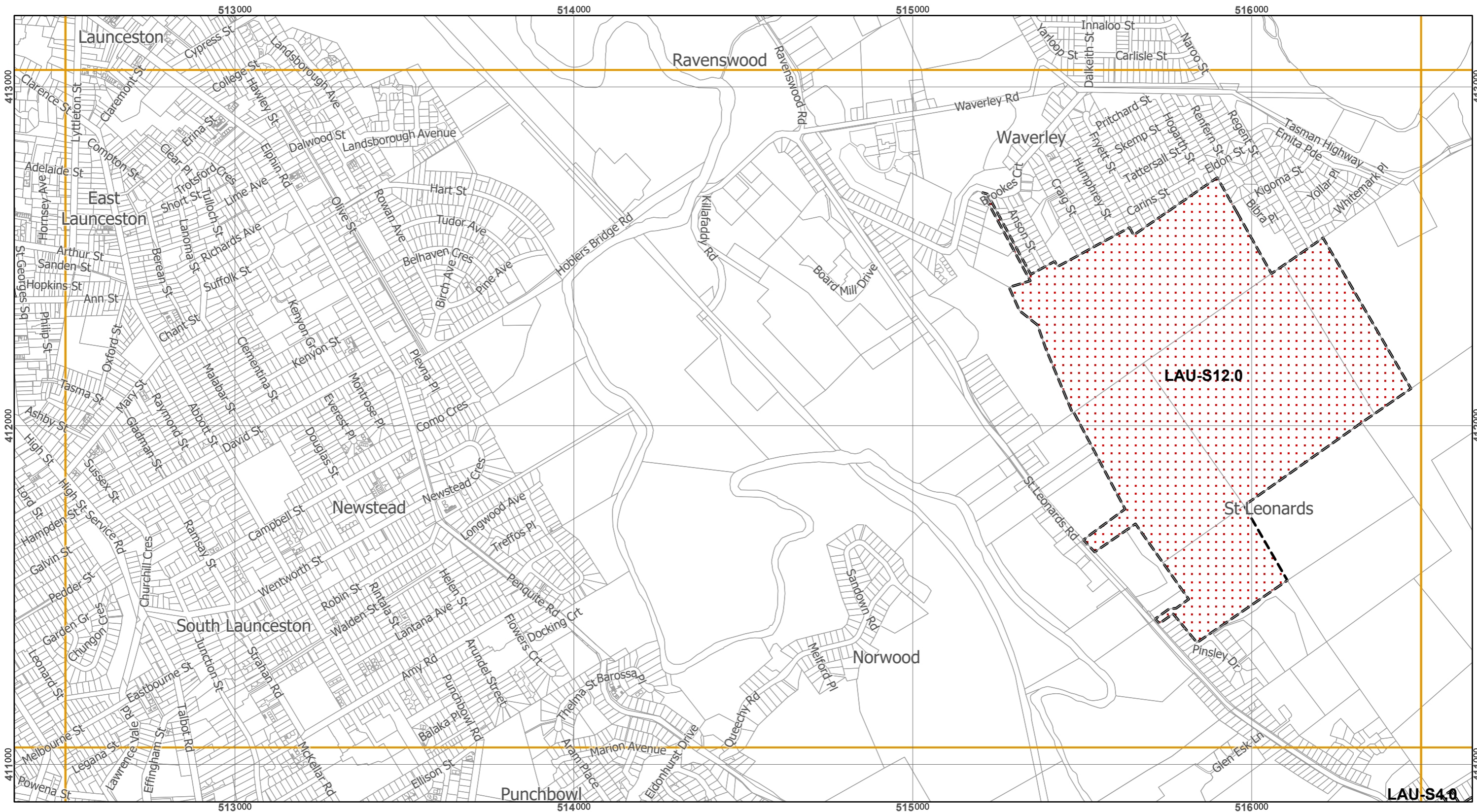
Scale at A3 : 1:11,000

Coordinate System : GDA 94 MGA Zone 55
 Zone data from Launceston City Council
 Base Topographic data from LIST ©State of Tasmania

Print date : 29/08/2019



Tasmanian Planning Scheme - Launceston LPS: Specific Area Plans and Site-specific Qualifications



	Site Specific Qualifications		LAU-S6.0 Relbia and Glenwood Road		LAU-S12.0 Development Potential
	LAU-S1.0 Mount Stuart Drive		LAU-S7.0 Cataract Gorge Subdivision		LAU-S13.0 Western Hillside
	LAU-S2.0 The Green		LAU-S8.0 Forestry Area		LAU-S14.0 Southern Gateway
	LAU-S3.0 Raglan Street		LAU-S9.0 Launceston Plaza Retail		LAU-S15.0 Central Area
	LAU-S4.0 Hillary Street		LAU-S10.0 Invermay/Inveresk Flood Inundation		LAU-S16.0 Rural Conservation
	LAU-S5.0 Drivers Run		LAU-S11.0 Cataract Gorge Management		

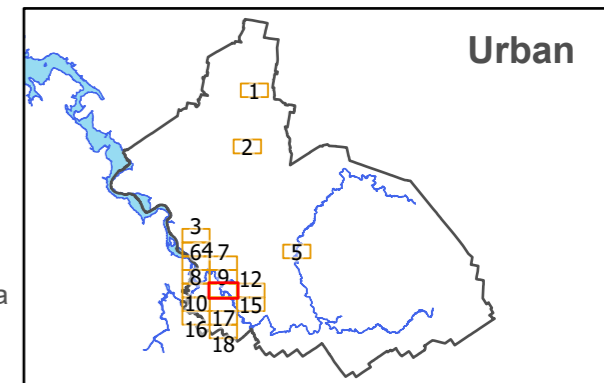
Map 11 of 18 (Urban)



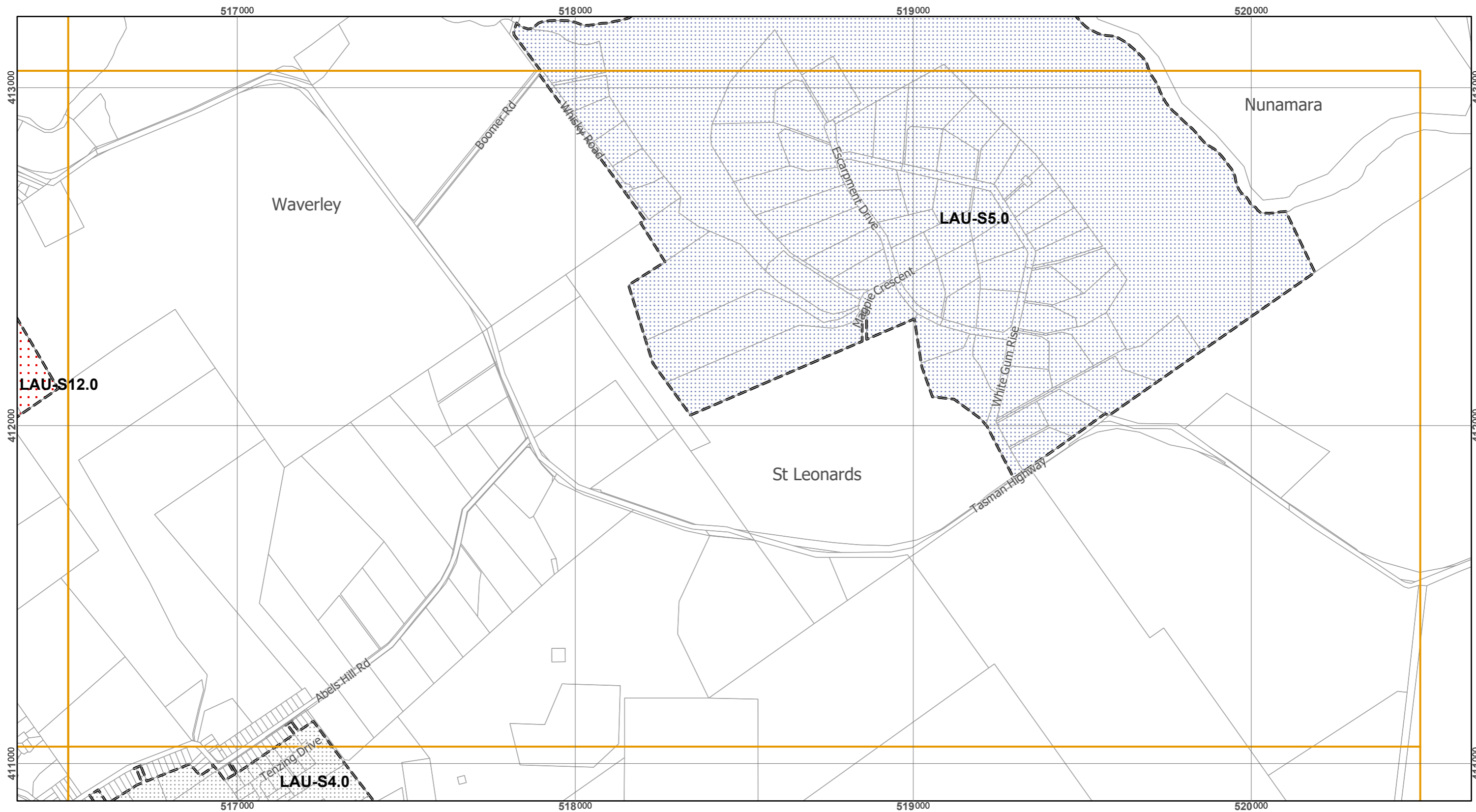
Scale at A3 : 1:11,000

Coordinate System : GDA 94 MGA Zone 55
 Zone data from Launceston City Council
 Base Topographic data from LIST ©State of Tasmania

Print date : 29/08/2019



Tasmanian Planning Scheme - Launceston LPS: Specific Area Plans and Site-specific Qualifications



Site Specific Qualifications	LAU-S6.0 Relbia and Glenwood Road	LAU-S12.0 Development Potential
LAU-S1.0 Mount Stuart Drive	LAU-S7.0 Cataract Gorge Subdivision	LAU-S13.0 Western Hillside
LAU-S2.0 The Green	LAU-S8.0 Forestry Area	LAU-S14.0 Southern Gateway
LAU-S3.0 Raglan Street	LAU-S9.0 Launceston Plaza Retail	LAU-S15.0 Central Area
LAU-S4.0 Hillary Street	LAU-S10.0 Invermay/Inveresk Flood Inundation	LAU-S16.0 Rural Conservation
LAU-S5.0 Drivers Run	LAU-S11.0 Cataract Gorge Management	

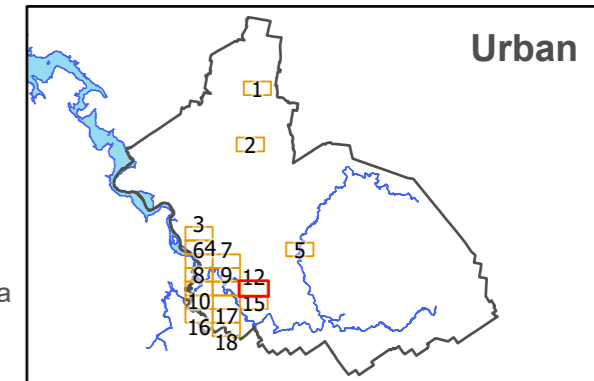
Map 12 of 18 (Urban)



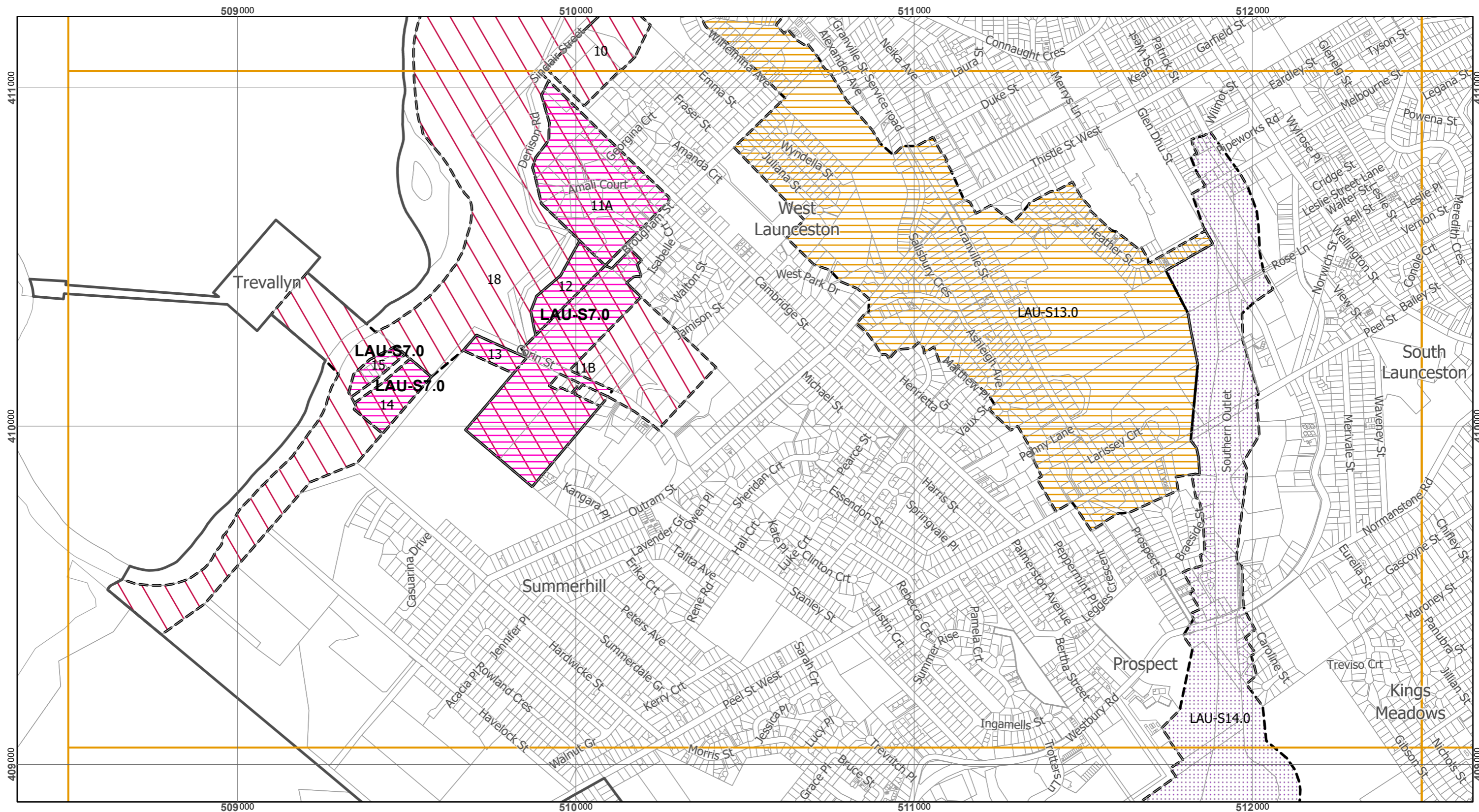
Scale at A3 : 1:11,000

Coordinate System : GDA 94 MGA Zone 55
 Zone data from Launceston City Council
 Base Topographic data from LIST ©State of Tasmania

Print date : 29/08/2019



Tasmanian Planning Scheme - Launceston LPS: Specific Area Plans and Site-specific Qualifications



Site Specific Qualifications	LAU-S6.0 Relbia and Glenwood Road	LAU-S12.0 Development Potential
LAU-S1.0 Mount Stuart Drive	LAU-S7.0 Cataract Gorge Subdivision	LAU-S13.0 Western Hillside
LAU-S2.0 The Green	LAU-S8.0 Forestry Area	LAU-S14.0 Southern Gateway
LAU-S3.0 Raglan Street	LAU-S9.0 Launceston Plaza Retail	LAU-S15.0 Central Area
LAU-S4.0 Hillary Street	LAU-S10.0 Invermay/Inveresk Flood Inundation	LAU-S16.0 Rural Conservation
LAU-S5.0 Drivers Run	LAU-S11.0 Cataract Gorge Management	

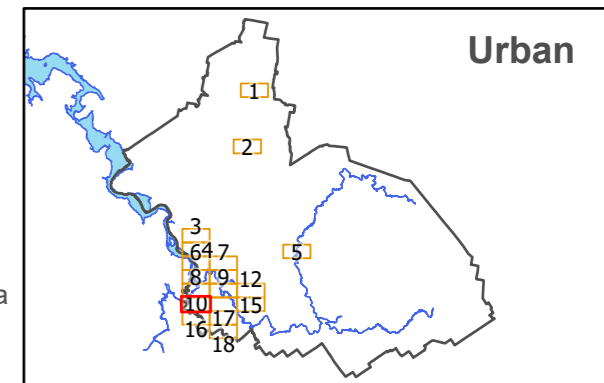
Map 13 of 18 (Urban)



Scale at A3 : 1:11,000

Coordinate System : GDA 94 MGA Zone 55
 Zone data from Launceston City Council
 Base Topographic data from LIST ©State of Tasmania

Print date : 29/08/2019



Tasmanian Planning Scheme - Launceston LPS: Specific Area Plans and Site-specific Qualifications



	Site Specific Qualifications		LAU-S6.0 Relbia and Glenwood Road		LAU-S12.0 Development Potential
	LAU-S1.0 Mount Stuart Drive		LAU-S7.0 Cataract Gorge Subdivision		LAU-S13.0 Western Hillside
	LAU-S2.0 The Green		LAU-S8.0 Forestry Area		LAU-S14.0 Southern Gateway
	LAU-S3.0 Raglan Street		LAU-S9.0 Launceston Plaza Retail		LAU-S15.0 Central Area
	LAU-S4.0 Hillary Street		LAU-S10.0 Invermay/Inveresk Flood Inundation		LAU-S16.0 Rural Conservation
	LAU-S5.0 Drivers Run		LAU-S11.0 Cataract Gorge Management		

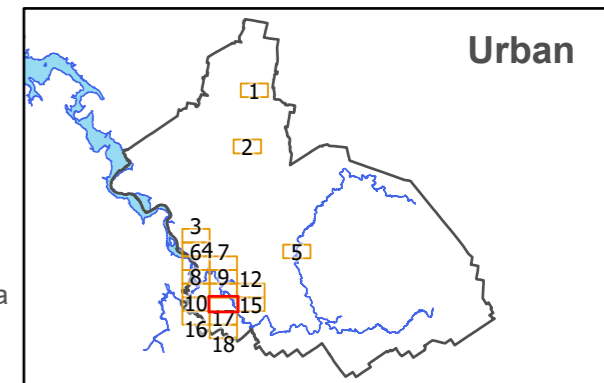
Map 14 of 18 (Urban)



Scale at A3 : 1:11,000

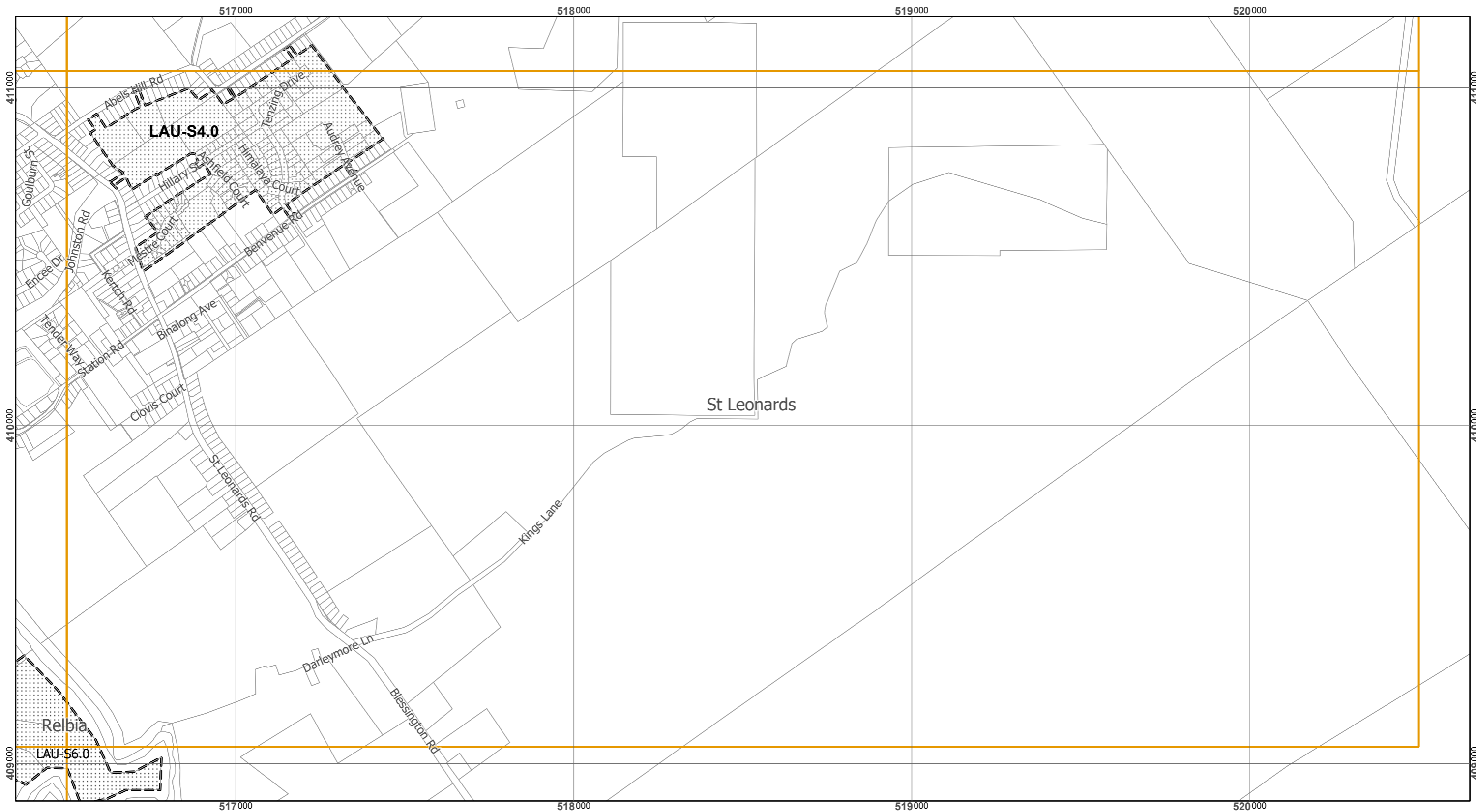
Coordinate System : GDA 94 MGA Zone 55
 Zone data from Launceston City Council
 Base Topographic data from LIST ©State of Tasmania

Print date : 29/08/2019



Urban

Tasmanian Planning Scheme - Launceston LPS: Specific Area Plans and Site-specific Qualifications



	Site Specific Qualifications		LAU-S6.0 Relbia and Glenwood Road		LAU-S12.0 Development Potential
	LAU-S1.0 Mount Stuart Drive		LAU-S7.0 Cataract Gorge Subdivision		LAU-S13.0 Western Hillside
	LAU-S2.0 The Green		LAU-S8.0 Forestry Area		LAU-S14.0 Southern Gateway
	LAU-S3.0 Raglan Street		LAU-S9.0 Launceston Plaza Retail		LAU-S15.0 Central Area
	LAU-S4.0 Hillary Street		LAU-S10.0 Invermay/Inveresk Flood Inundation		LAU-S16.0 Rural Conservation
	LAU-S5.0 Drivers Run		LAU-S11.0 Cataract Gorge Management		

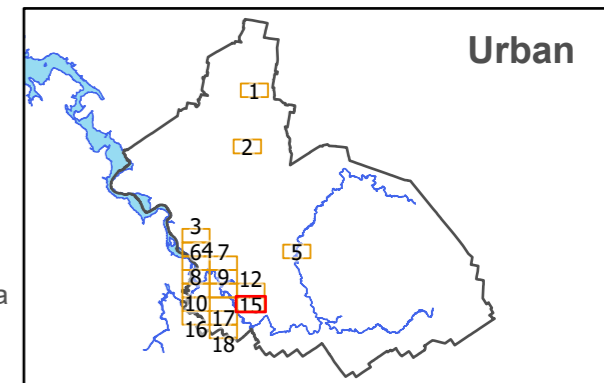
Map 15 of 18 (Urban)



Scale at A3 : 1:11,000

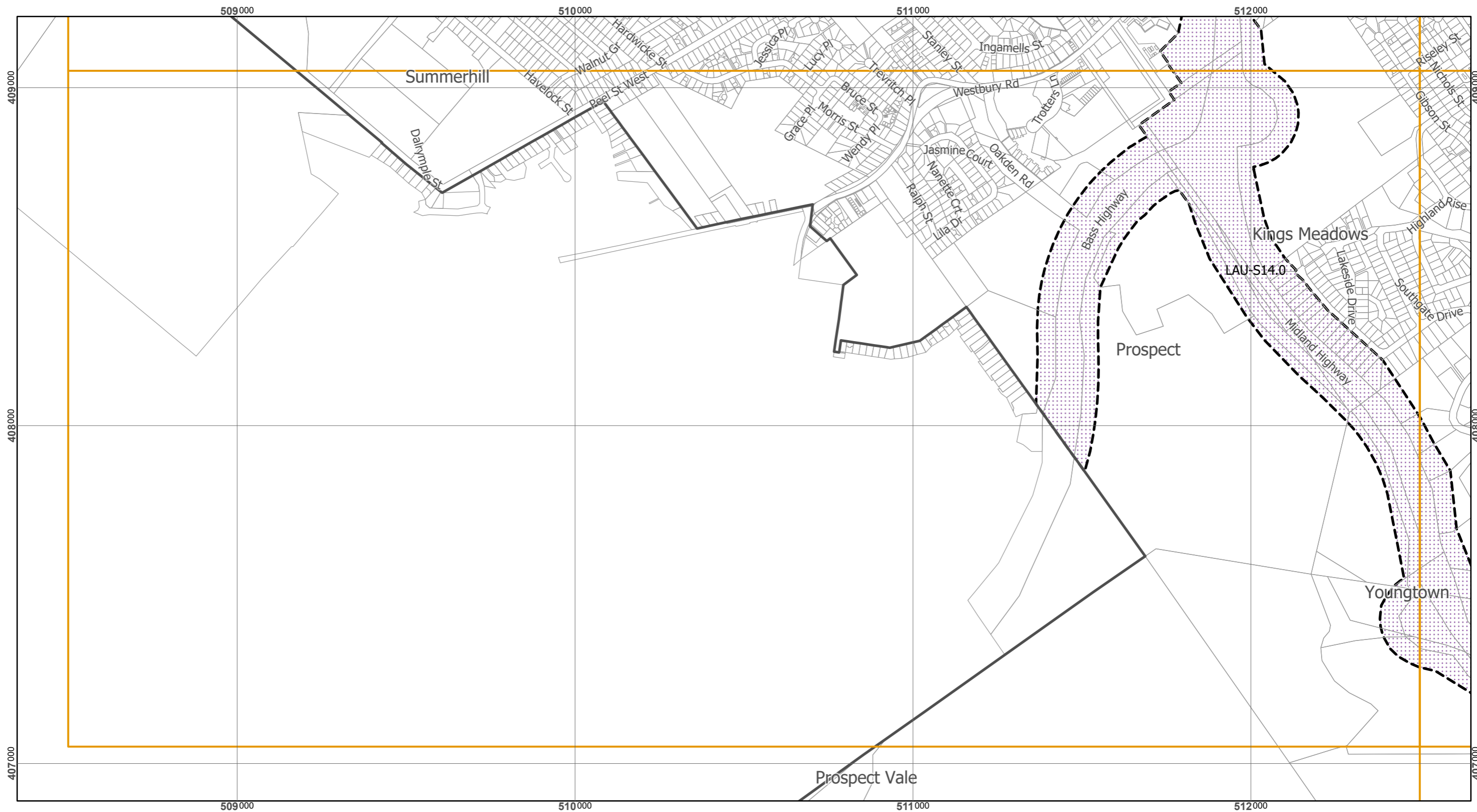
Coordinate System : GDA 94 MGA Zone 55
 Zone data from Launceston City Council
 Base Topographic data from LIST ©State of Tasmania

Print date : 29/08/2019



Urban

Tasmanian Planning Scheme - Launceston LPS: Specific Area Plans and Site-specific Qualifications



Site Specific Qualifications	LAU-S6.0 Relbia and Glenwood Road	LAU-S12.0 Development Potential
LAU-S1.0 Mount Stuart Drive	LAU-S7.0 Cataract Gorge Subdivision	LAU-S13.0 Western Hillside
LAU-S2.0 The Green	LAU-S8.0 Forestry Area	LAU-S14.0 Southern Gateway
LAU-S3.0 Raglan Street	LAU-S9.0 Launceston Plaza Retail	LAU-S15.0 Central Area
LAU-S4.0 Hillary Street	LAU-S10.0 Invermay/Inveresk Flood Inundation	LAU-S16.0 Rural Conservation
LAU-S5.0 Drivers Run	LAU-S11.0 Cataract Gorge Management	

Map 16 of 18 (Urban)

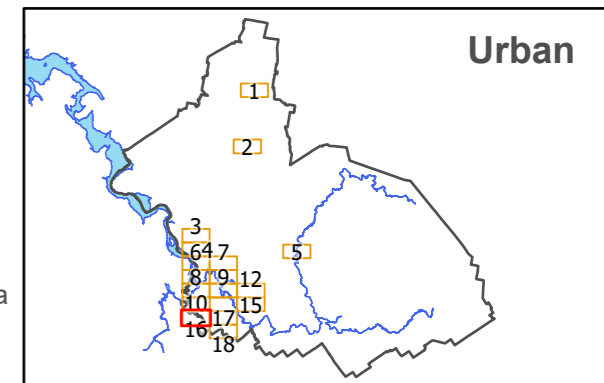


Scale at A3 : 1:11,000



Coordinate System : GDA 94 MGA Zone 55
 Zone data from Launceston City Council
 Base Topographic data from LIST ©State of Tasmania

Print date : 29/08/2019



Tasmanian Planning Scheme - Launceston LPS: Specific Area Plans and Site-specific Qualifications



Site Specific Qualifications	LAU-S6.0 Relbia and Glenwood Road	LAU-S12.0 Development Potential
LAU-S1.0 Mount Stuart Drive	LAU-S7.0 Cataract Gorge Subdivision	LAU-S13.0 Western Hillside
LAU-S2.0 The Green	LAU-S8.0 Forestry Area	LAU-S14.0 Southern Gateway
LAU-S3.0 Raglan Street	LAU-S9.0 Launceston Plaza Retail	LAU-S15.0 Central Area
LAU-S4.0 Hillary Street	LAU-S10.0 Invermay/Inveresk Flood Inundation	LAU-S16.0 Rural Conservation
LAU-S5.0 Drivers Run	LAU-S11.0 Cataract Gorge Management	

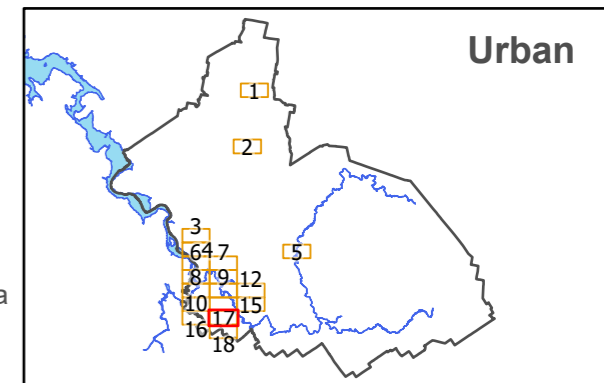
Map 17 of 18 (Urban)



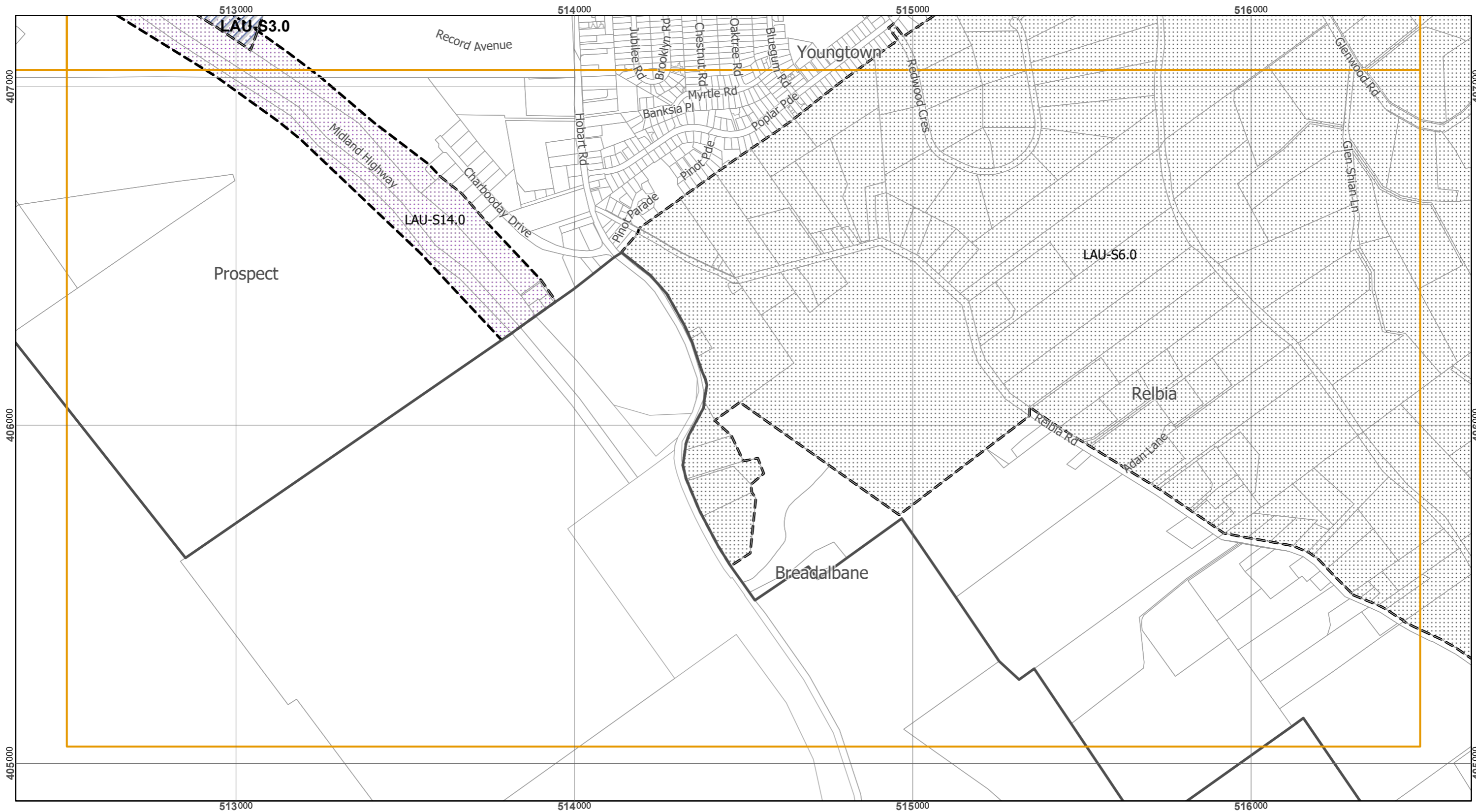
Scale at A3 : 1:11,000

Coordinate System : GDA 94 MGA Zone 55
 Zone data from Launceston City Council
 Base Topographic data from LIST ©State of Tasmania

Print date : 29/08/2019



Tasmanian Planning Scheme - Launceston LPS: Specific Area Plans and Site-specific Qualifications



	Site Specific Qualifications		LAU-S6.0 Relbia and Glenwood Road		LAU-S12.0 Development Potential
	LAU-S1.0 Mount Stuart Drive		LAU-S7.0 Cataract Gorge Subdivision		LAU-S13.0 Western Hillside
	LAU-S2.0 The Green		LAU-S8.0 Forestry Area		LAU-S14.0 Southern Gateway
	LAU-S3.0 Raglan Street		LAU-S9.0 Launceston Plaza Retail		LAU-S15.0 Central Area
	LAU-S4.0 Hillary Street		LAU-S10.0 Invermay/Inveresk Flood Inundation		LAU-S16.0 Rural Conservation
	LAU-S5.0 Drivers Run		LAU-S11.0 Cataract Gorge Management		

Map 18 of 18 (Urban)



Scale at A3 : 1:11,000

Coordinate System : GDA 94 MGA Zone 55
Zone data from Launceston City Council
Base Topographic data from LIST ©State of Tasmania

Print date : 29/08/2019

