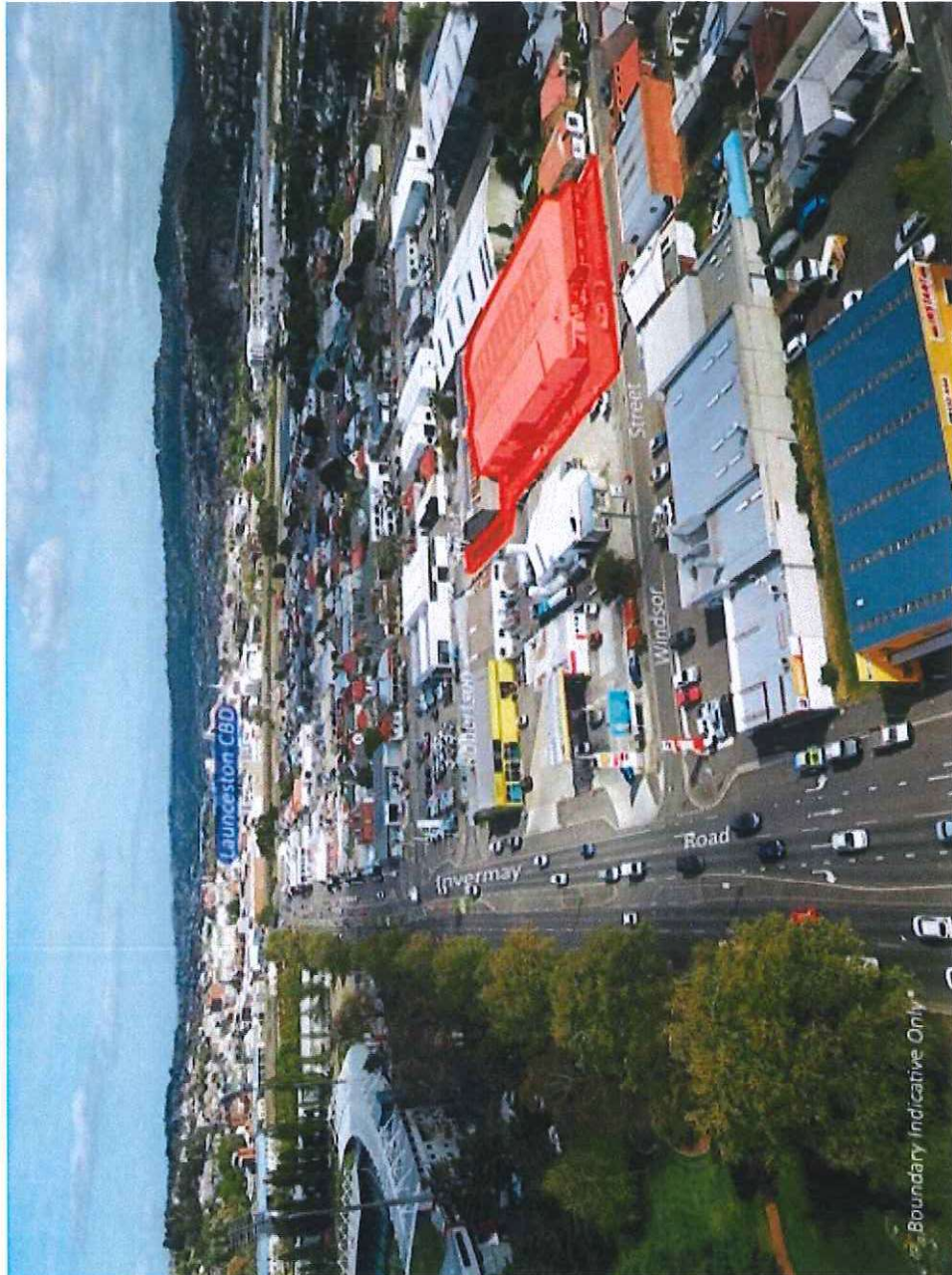
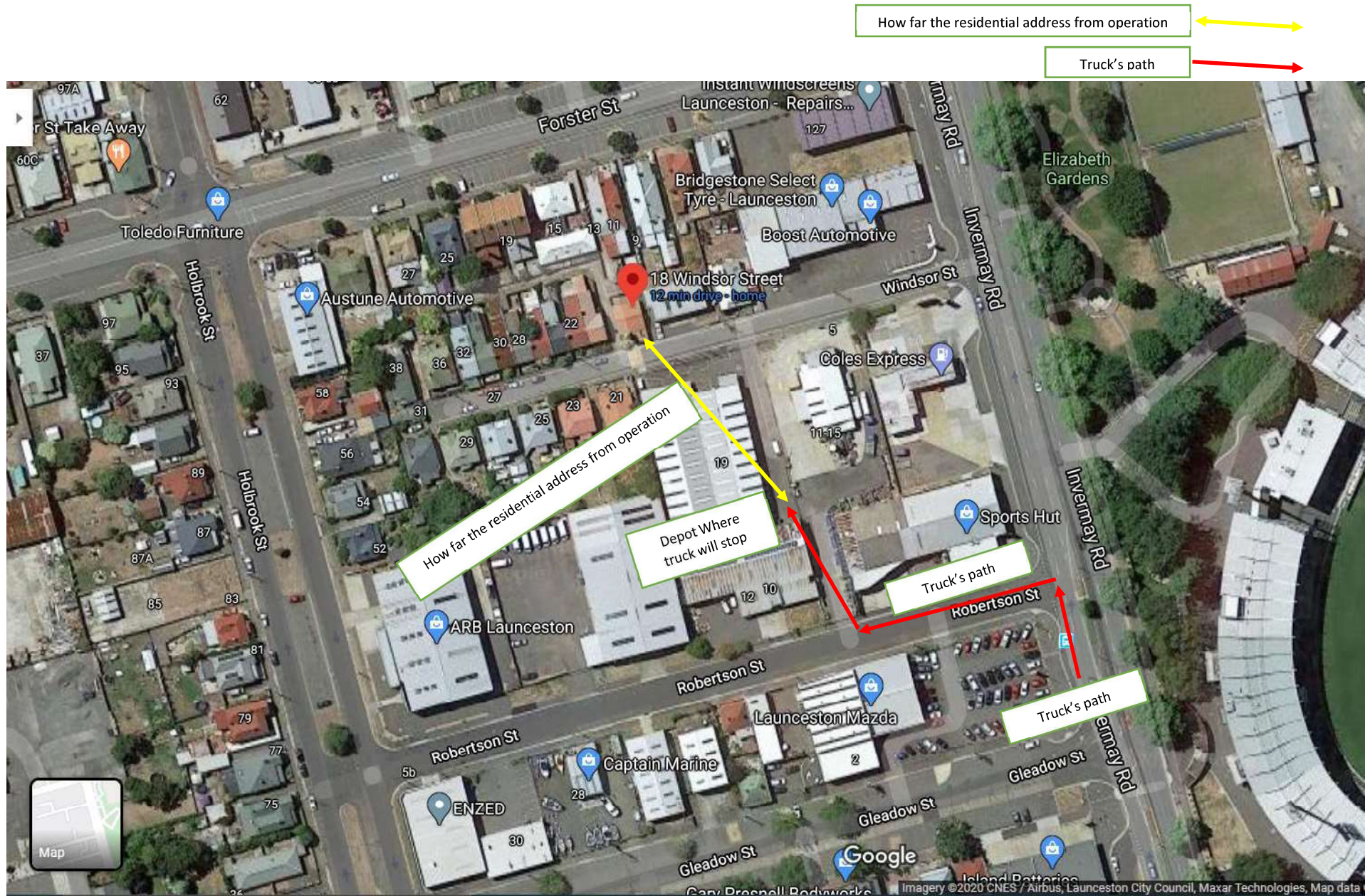


Council Meeting - 14 May 2020 - Agenda Item 9.3

Attachment 2 - Plans to be Endorsed - 17-19 Windsor Street, Invermay

17-19
→ Windsor Street
Invermay
Tas 7243





To whom it may concern.

Please see this letter of application for our tentative lease of 17-19 Windsor Street, Invermay 7248.

Aramex, is an international express, mail delivery and logistics services company based in Dubai, United Arab Emirates (UAE). The company was founded by Jordanian Fadi Ghandour and Bill Kingson in 1982. It is the first Arab-based company to be listed on the NASDAQ stock exchange. Aramex is listed on the Dubai Financial Market. Bashar Obeid serves as the company's CEO, and Peter Lipinski is Australia's. Aramex has approximately 13,800 employees in 54 countries and a network consisting of 40 independent express companies. Formally, we were operating as Fastway Couriers.

Fastway has been operating in Australia and New Zealand for 33 years. Aramex bought the Fastway network 2 years ago, and we have rebranded across the country. Now, it is Tasmania's turn! Up until February last year, our Launceston depot was run out of Montague Street, Invermay for 8 years. We pride ourselves in Fastway/Aramex is heavily involved in the local community, supporting charities such as Daffodil Day, Beyond Blue and other local ventures. Fastway/Aramex is a franchise-based company. We have many families, brothers, sisters, husbands and wife teams, friends etc running our depots. These people have invested their money into our business, and we need to ensure that they are receiving every support possible from our Franchise Support Office, this includes making sure we have the best depot available in the area. This, to us, is 17-19 Windsor Street, Invermay. This site is a great place for us to operate out of as the land is flat, it is centrally located with easy access for our staff members, drivers and most importantly, our customers.

This is the daily run sheet of how we operate our business in Launceston.

5:30am – Morning supervisor and 7 drivers come into the depot to organise their runs. The forklift is used, but for only approximately 10 minutes. This work is conducted inside the depot, with all doors, windows etc closed. There is minimum noise produced.

6:30am- All drivers bring their vans inside the depot, and stock their vehicles with their parcels for the morning.

7:00am – 8:00am – The drivers will leave the depot. The morning supervisor will remain onsite.

8:00am – 9:00am – Only one person will remain onsite, this is usually the morning supervisor, or an administration support staff member.

11:00am – 11:30am – A truck comes in from Devonport with daily freight. The forklift is used, for no more than 30 minutes. Again, only one staff member and one truck driver on site. Customers are welcome to collect parcels from 9:00am until 4:00pm Monday to Friday. Generally, customers are on site for no more than 5-10minutes.

11:00am – 3:30pm – There will be 1 admin staff onsite, along with our Regional Franchise Manager, General Manager and Customer Service Manager.

3:30pm – 5:00pm – All the drivers return to the depot with their freight collected from the day. The remaining staff have left the depot no later than 5:00pm.

7:00pm – 8:00pm – Our truck arrives with our daily freight, the truck is taken inside the depot and all doors etc are closed, so there is minimal disruption and noise. The forklift is also used, but this is very minimal and approximately for 20minutes.

10-30pm 11.30pm

- ~~12:00am – 1:00am~~ – Our truck driver returns and repeats the same process. Forklift is also used again for 15 minutes. The forklift is used, but for only approximately 10 minutes. This work is conducted inside the depot, with all doors, windows etc closed. There is minimum noise produced.

Unfortunately, we must have this truck arrive at this time due to our company fatigue management policy. It is not ideal, but this ensures all staff and drivers are healthy and have had a reasonable amount of rest between drives and or shifts.

Sound levels created from a semi-trailer during the day, when background noise is at its highest, are far less noticeable than during the evening/night when background noise is at its lowest.

Please provide some sound modelling on this one.

- evening/night when background noise is at its lowest our sound emission was 80dB.
- For a reference, 80dB is as loud as Garbage disposal, dishwasher, average factory, freight train (at 15 meters). Car wash at 20 ft (89 dB); propeller plane flyover at 1000 ft (88 dB); diesel truck 40 mph at 50 ft (84 dB); diesel train at 45 mph at 100 ft (83 dB). Food blender (88 dB); milling machine (85 dB); garbage disposal (80 dB).
- Reference: <https://www.chem.purdue.edu/chemsafety/Training/PPETrain/dblevels.htm>
- Device used to measure sound level : The Lutron SL-4033SD

A forklift condition could be formulated. Please provide details the type of beeper the electric forklifts have or the times of when there is only 1 staff member.

The condition would be something along the lines of Intrusive pulsed tonal forklift alarms are prohibited onsite, an alternative non-intrusive alarm complying with AS1418 must be used.

- **Our forklift model: Crown ST 3000**



- It is classed as is environmental friendly electric (24 V / 95 - 200 Ah) walkie forklift which means it does not create noise like traditional gas/petrol operated forklift.
- These electric walkie forklift is battery powered and only source of noise is horn (if applied by the user)
- The specification of Crown ST 3000 walkie forklift can be found at <https://www.crown.com/en-au/forklifts/st-sx-stacker.html>
- The forklift features and technical configuration is attached in this email.

One staff member will be onsite from 7am - 9am, then again from 4pm - 5pm

Please provide the specifications on the type of shutter doors, provide the decibels readings and the regulation they refer to and information on the sound proofing they intend on putting in.

- **Shutter door Specification-**
- **Electric Roller Shutter : Titan Roller Shutter**
 - Curtain Weight **3.4kg/m2 (AR551 Series).**
 - Size Range Width **3200mm. (Single Span)**
 - Size Range Height **3100mm. (Standard Range)**
 - Maximum Size **11.8m2**
 - Materials Used **90% Aluminium with some Plastics, Rubber and Spring Steels.**
- **Sound emission:** 3-10 decibels
- **Benefits:**
 - Maximum security
 - Up to 60% noise reduction
 - Up to 15° cooler in summer
 - Up to 15° warmer in winter
 - Up to 98% light block out
 - Up to 25% more energy efficient
 - Secure, built-in locking mechanism
 - Eliminates condensation
 - Reduces glare
 - Rust prevention: 95% components aluminium
- For more information: <https://www.ultimateshutter.com.au/titan-roller-shutters/>

-

Sound Proofing they intend to put in:

-

- Soundproofing Walls Using Barrierboard :
 - Barrierboard standard tested systems offer Rw ratings of up to 62 and other systems with even higher Rw`s. It is in full compliance with the May 2004 Building Code of Australia sound insulation provisions and will substantially reduce noise in domestic, commercial and industrial sites.
- How Barrierboard reduces noise:
 - Barrierboard is designed to absorb and reduce perceived noise levels by as much as 90 per cent.
 - Sound and noise passes through the first layer of plasterboard and is then greatly reduced by the decoupling insulating layer to minimise structural and airborne noise from passing to the final layer.
- Why we choose this sound proofing?
 - Barrierboard can be installed in commercial and industrial sites in place of standard gyrock sheeting or other types of wall materials. It is a very dense sheet being 32mm thick and comes in two convenient sheet sizes; 2700x1200 and 2400x1200. Barrierboard is easy to install (about 50 per cent faster than conventional soundproofing systems).
- For more information: <https://www.soundblock.com.au/sound-proofing-products/walls>

Hannah Bradley
General Manager
Aramex Launceston & Devonport

Hi Hannah,

As per our conversation on 27th March Friday I have found below:

We will be going to option **b** which is:

b). You seek to provide further evidence and argument to support the proposal and demonstrate that the operation of the trucks, particularly the midnight truck, will not cause a nuisance;

Proposal and argument by Aramex:

Council's problem:

- the applicant has advised the truck operates at approximately 80dB
 - Whilst, background levels were not provided, officer experience measuring noise in other residential areas suggests background is around ~40-45dB(A)
 - An increase of more than 10dB is quite noticeable, one of potentially up to 40dB is likely to be an environmental nuisance.

Our answer:

- We investigated another decibel reading on 27th March.
 - We stood at the 20 Windsor st (Residential) which is closet to the depot
 - From 10:43-10:52pm the average dB was 51dB (Photos enclosed)
 - when the truck approached and parked at 10:59pm we found it was 55.9dB to be exact. (Photos enclosed)
 - Previously, when we estimated 80dB it was an estimation based on you standing next to truck to measure the sound level. But the closet resident (i:e: 20 Windsor st) will not be standing next to the truck.

Councils' problem:

- the freight trucks, which are an essential part of the business, will be operating 7-8pm and again 12am-1am;

Our Answer:

- We have pushed back the operation hour the hour from 12am-1am to 10:30pm-11:30pm
- How the truck will operate: Please check enclosed map

Samiul Islam

Regional Franchise Manager

Aramex (Launceston & Devonport)