

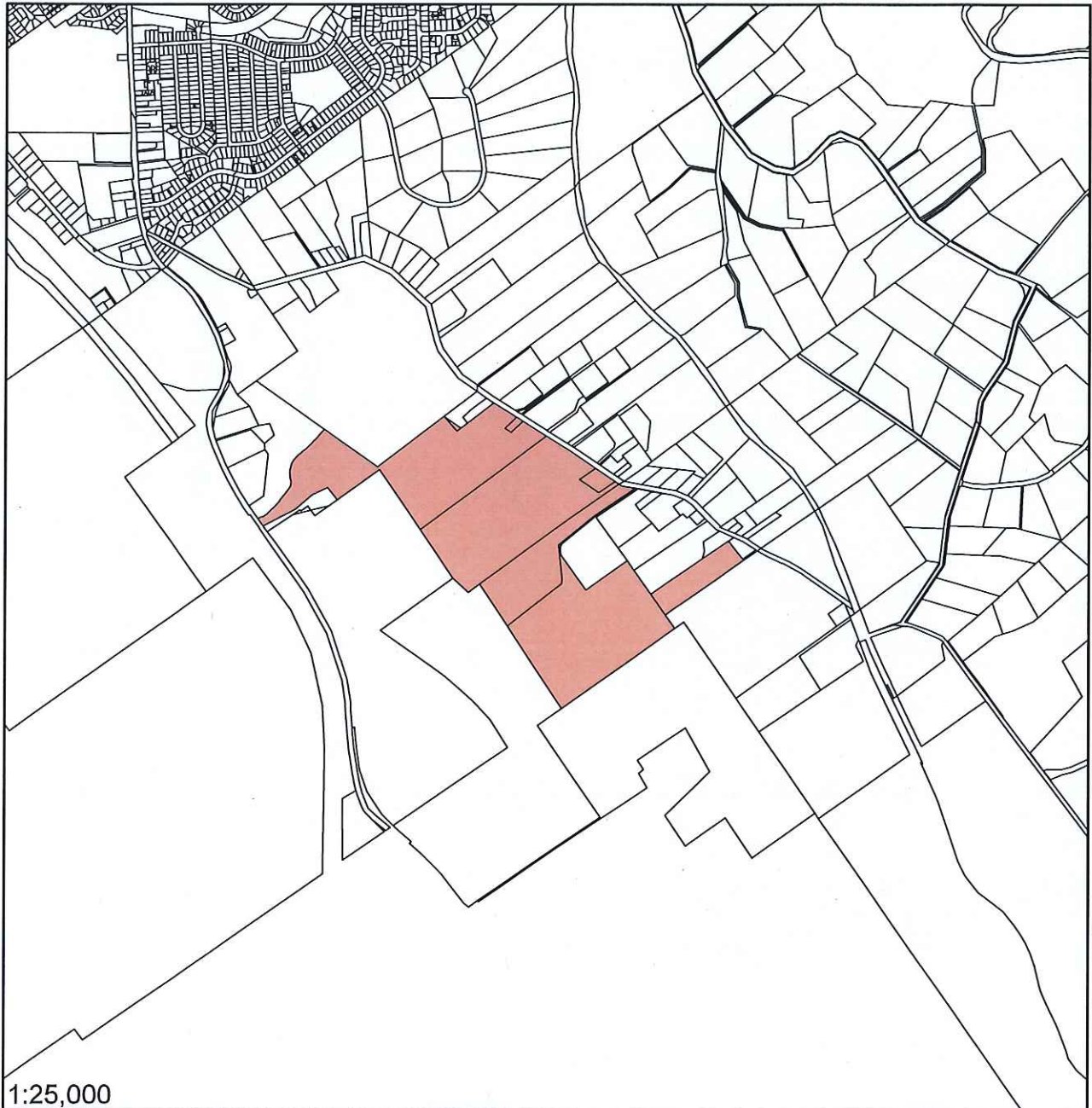
TASMANIAN PLANNING SCHEME - LAUNCESTON LOCAL PROVISIONS SCHEDULE

Amendment PSA-LLP003

Apply the Rural Zone to the following properties at Relbia as shown:

Titles included: 144388/1, 32517/1, 130808/2, 9054/1, 130686/1, 24552/3, 129968/2, 6529/1

Amend the Tasmanian Local Provisions Schedule maps as below



Rural Zone

THE COMMON SEAL
of the City of
Launceston was
hereunto affixed in the
presences of: -

Date



Michael Stretton
Chief Executive Officer