

# Living as a Senior

## in Launceston

## Newsletter

Edition 16, June 2018



### Mayor's Message

I am pleased to say the Launceston City Deal, which is 3 levels of government working together to make Launceston one of Australia's most liveable and innovative regional cities, is on track and meeting its commitments. You will have noticed work on the Brisbane Street Mall is beginning and development at City Square is progressing well: these are initiatives of the City Heart Project which is part of the City Deal.

There's a lot that's happening and changing in our City, but I'm pleased we're able to celebrate the city's past, as we've done in Civic Square and other projects, and to commemorate Launceston's history and achievements for future generations.

In other news, a report into the financial benefits of Hawthorn AFL matches in Launceston was recently released.

The PricewaterhouseCoopers report, states that the deal with the State Government was worth more than \$20.4M in total direct expenditure into the Tasmania economy in 2017. Most of us have seen the activity in our City around each game day.

The report only reinforces the importance of the Hawthorn deal to Launceston and the wider Northern region, particularly during winter months when we don't see as many tourists.

These are exciting times and I trust that senior members of our community will enjoy the renewal Launceston is experiencing.

I would like to thank you and acknowledge the input that our senior citizens have made to consultation processes and all of the work that you have done for the benefit of our city.

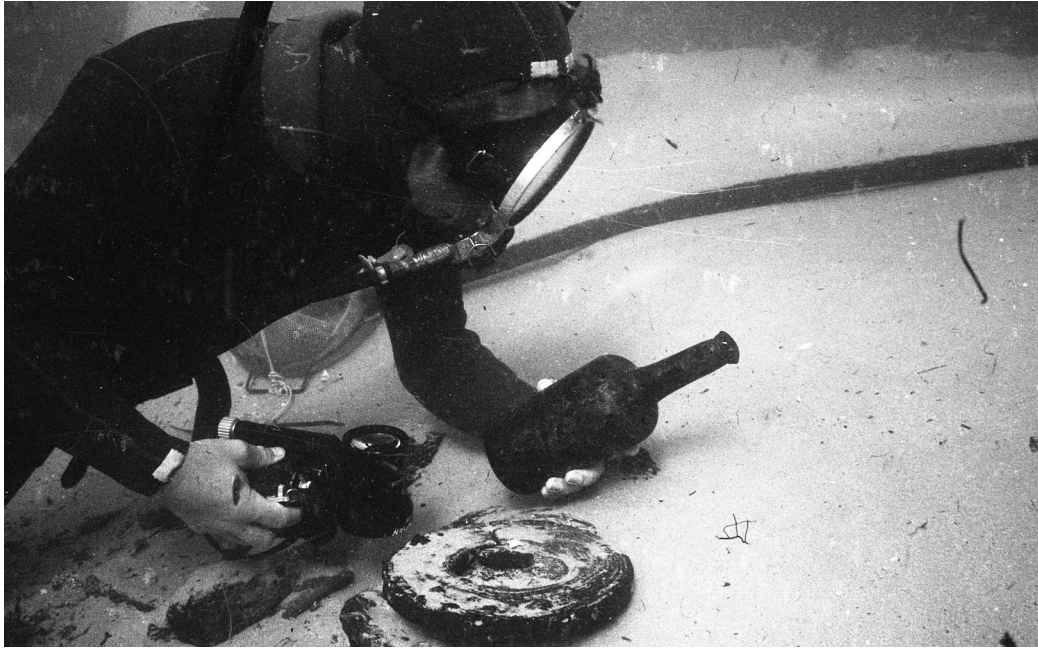
Albert van Zetten  
Mayor

### Car Park Lift

The lift in the Paterson Street East car park will be out of order from 4 June to 16 July 2018 for essential maintenance.

Alternative CBD parking with lift access is available at the Paterson Street West car park.

# World's oldest surviving beer – made new



The Queen Victoria Museum and Art Gallery (QVMAG) has partnered with the Australian Wine Research Institute (AWRI) and LION's James Squire Brewery to develop a beer from yeast found in a ship wrecked off Tasmania more than two centuries ago.

The Sydney Cove was a merchant ship travelling from India to the British Colony of Port Jackson when it was wrecked off Preservation Island in Bass Strait in November, 1797.

The Sydney Cove's contents included tea, rice and tobacco plus more than 30,000 litres of highly-prized alcohol. The icy waters of Bass Strait allowed yeast in these sealed bottles of beer to stay alive for far longer than any previously known yeast.

Following excavation of the wreck between 1977 and the 1990s, QVMAG obtained the ship's objects including beer bottles for its collection, many of which are now on display at Inveresk. Years later the contents in the bottles were re-examined and QVMAG worked with scientists at the AWRI to isolate the yeast. Using skills honed working with wine yeast, the AWRI identified its genetic make-up and found it was a rare hybrid strain which differs from modern ale strains. The yeast was then taken back to the laboratory where experimental brews were born and the journey to commercialise the product began.

Completing the final piece of the puzzle, QVMAG is excited to announce it has partnered with James Squire to produce a special limited edition beer made from the 220 year-old yeast, aptly named The Wreck - Preservation Ale.

Brewers at James Squire's Malt Shovel Brewery rose to the challenge of creating a beer from yeast that had a mind of its own. After some trial and error using modern brewing techniques to craft the centuries-old yeast, the team has delivered a Porter-style beer with hints of blackcurrant and spices, giving it a rich and smooth taste.

The Wreck - Preservation Ale will be available on tap at James Squire brew houses around the country from June.

*Photo courtesy of Mike Nash, Parks and Wildlife - diver explores the Sydney Cove wreck in the 1990s.*

# TasALERT.com

## Where you go to know

TasALERT is a Tasmanian emergency website providing a single source of official emergency information from across government, including Tasmania Police, Tasmania Fire Service, and State Emergency Service (SES).

It's important that we all have access to alerts and information to help us prepare to act quickly if an emergency happens. TasALERT makes it easy to find emergency information and warnings relevant to you or those you care about.

The map on the home page lets you choose the types of information you would like to see during an emergency, including bushfire warnings, flood warnings, road closures and school closures.

The website also contains a range of handy resources like contact numbers and useful advice about what you should do before, during and after an emergency. This information has also been translated into other languages.

The TasALERT website has been built to be highly resilient during an emergency. It is also supported by the TasALERT Facebook and Twitter accounts. Through social media, you can get updates as they happen, and engage with the TasALERT team.



# Keep Warm This Winter

## Launceston Leisure & Aquatic Centre



Launceston Leisure & Aquatic Centre offers a wide range of classes and facilities catering to all ages and abilities. Classes aim to improve quality of life through healthy living.

Open seven days, the Centre provides a safe and supportive environment to help you achieve your health goals.

The Centre provides visit passes, casual entries, and Memberships including off-peak, to suit you and your needs. Valid concession cards can save you up to 25% on regular entry prices.

Age is no barrier at the centre, with over 350 seniors enjoying pain-free heated Aqua sessions, Kettlebell, Pilates and Yoga classes each week. Keep it social, bring a friend or even enjoy a coffee at Cube Aqua onsite after your workout.

Launceston Leisure & Aquatic offers:

- Free training program updates
- Free health assessments
- Over 60 classes per week
- Training solutions for arthritis management and mobility appropriate exercise

The team can help you maintain independence, stay strong, balanced and mobile, and your keep heart and mind healthy in an encouraging—and warm environment!

Stay active and keep warm this winter in the Launceston Leisure & Aquatic Centre.

Contact the team: Ph. 6323 3636

## Queen Victoria Museum & Art Gallery

Museum at 2 Invermay Road, Inveresk and  
Art Gallery at 2 Wellington Street, Launceston

### ON SHOW at the Museum:

The Three M's: Miniatures, Models and Memories  
Until 22 July

Spiders: Alive and Deadly  
30 June - 28 October

Be sure to bring the family to visit the new-look  
Phenomena Factory later this month - we've been  
busy refurbishing the space with exciting new  
interactive exhibits for children.

### ON SHOW at the Art Gallery:

Our Chinese Treasures: The Wong Collection  
Ongoing

Landmark by Ilona Schneider  
Until 7 October

Robyn McKinnon: Disappearing into being  
Until 11 November

Community Collector  
Until 5 August

Ph. 6323 3777  
[www.qvmag.tas.gov.au](http://www.qvmag.tas.gov.au)

## Northern Suburbs Project is Underway

The City of Launceston has made a commitment in both the Greater Launceston Plan and the Launceston City Deal to develop a Northern Suburbs Revitalisation Plan (or NSRP for short) by 2018. The northern suburbs include Invermay, Mowbray, Newnham, Mayfield, Rocherlea, Waverley and Ravenswood.

The NSRP will be developed by listening to what people have to say about living and working in the northern suburbs, and, by working with all levels of government and coming up with ways to build upon existing assets. The purpose of the NSRP is to make living and working in the northern suburbs easier.

The NSRP will consider:

- Health and wellbeing
- Education
- Transport
- Housing
- Employment and economic growth
- Infrastructure and public spaces.

More information about the NSRP will be provided as work progresses.

---

## Contact Us

### Customer Service

Town Hall  
18 - 28 St John Street  
Launceston

Ph. 6323 3000  
[contactus@launceston.tas.gov.au](mailto:contactus@launceston.tas.gov.au)

### Opening hours

Monday to Friday  
8.30am to 5pm  
Emergency (24 hours):  
Ph. 6323 3333

### National Relay Service

The City of Launceston is National Relay Service (NRS) friendly. If you have a hearing or speech impairment, call us through the NRS and ask to be connected to Ph. 6323 3000  
Internet relay users can visit