

SKATEPARK CONCEPT PLAN

LEGEND

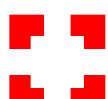
SKATEPARK WORKS:

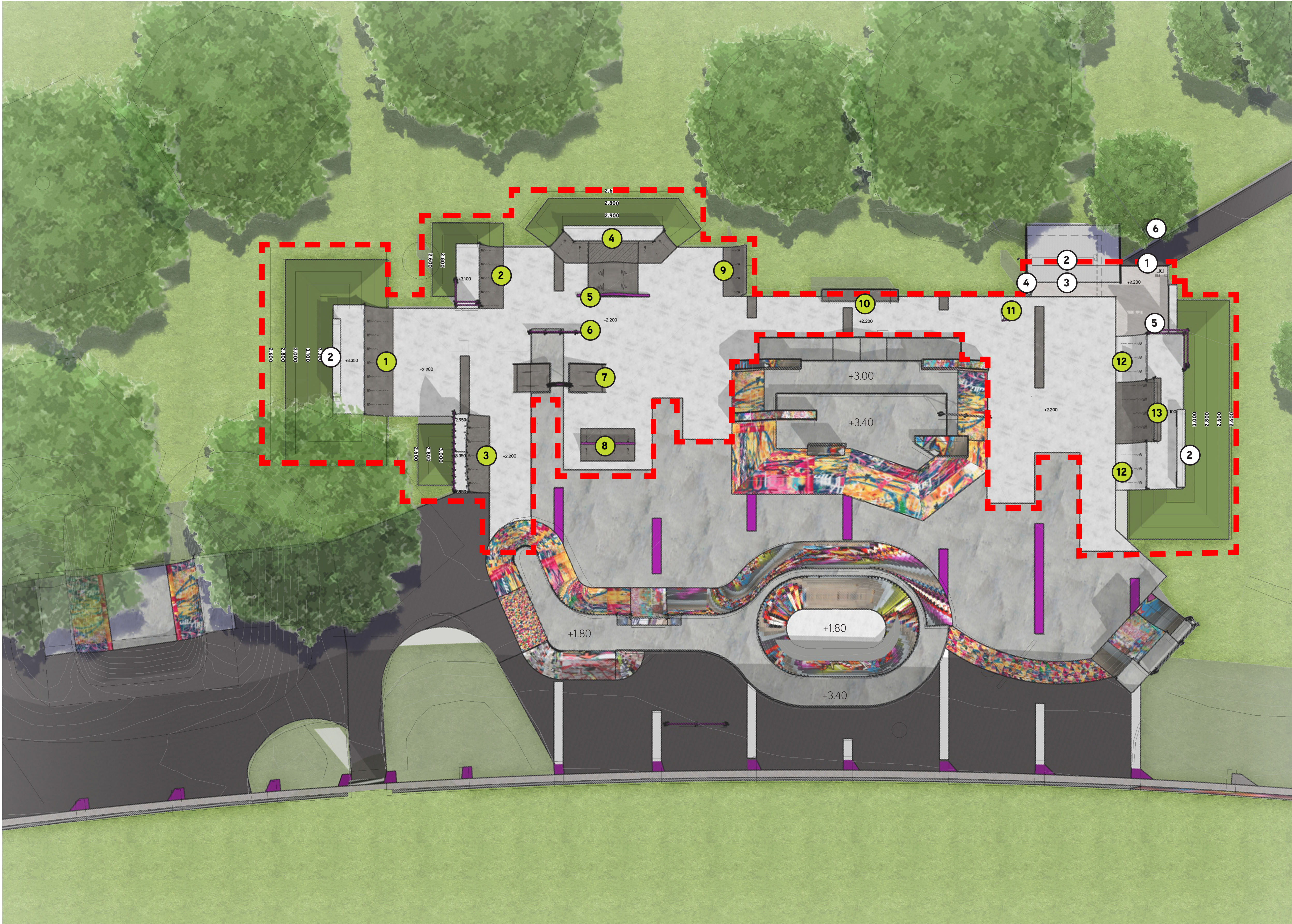
- 1 Quarter Pipe - 1050H
- 2 Quarter Pipe - 900H
- 3 Arched Quarter Pipe - 750 >> 1050H
- 4 Mogul + Quarter Blend - 750H
- 5 Slappy Kerb over Mogul
- 6 Flat Bar - 350H
- 7 Kicker to Kicker with Rainbow Rail
- 8 Spine Slider - 500H
- 9 Cantilever Quarter Pipe - 750H
- 10 Flat Ledge - 375H
- 11 Pole Jam
- 12 Quarter Pipe - 900H
- 13 Extension - 1500H

LANDSCAPE WORKS:

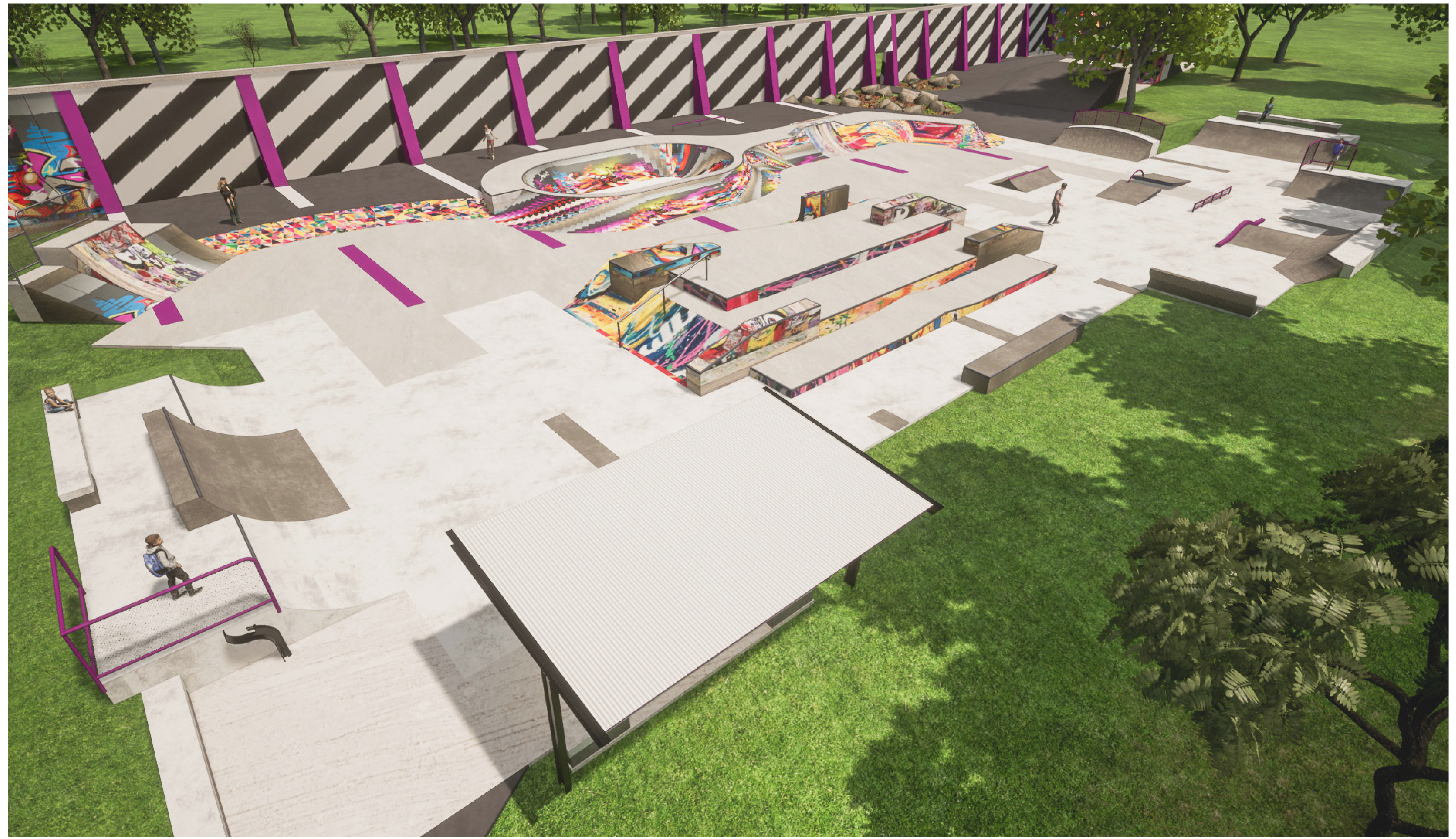
- 1 Entry Space
- 2 Spectator Seating
- 3 Shade Shelter
- 4 Rubbish Bins
- 5 Drink Fountain
- 6 Entry Sign

EXTENT OF WORKS:

-  Outline of current works including demolition to existing skatepark.



SKATEPARK OVERVIEW

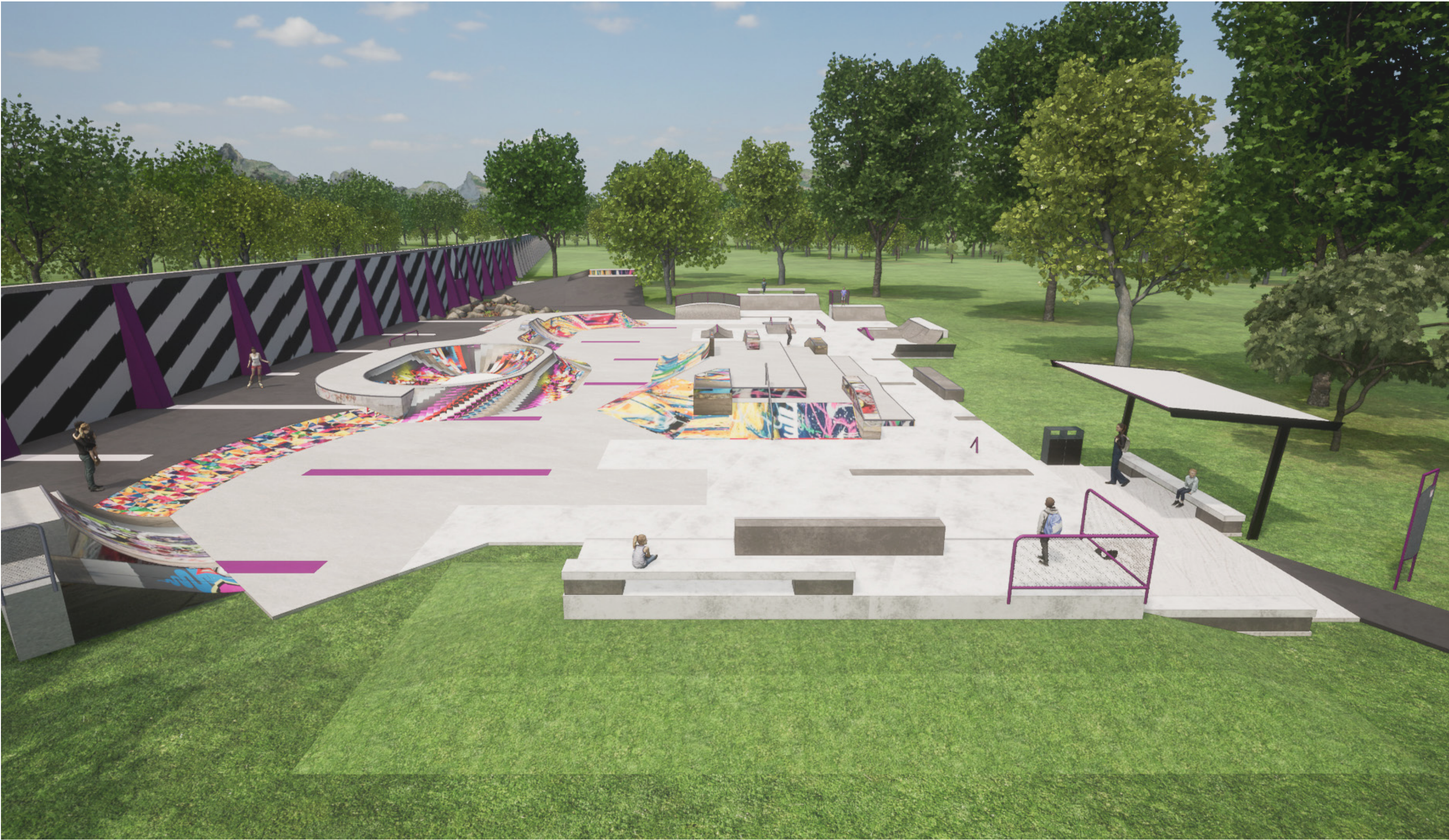


CONVIC



ROYAL PARK SKATEPARK EXTENSION

SKATEPARK CLOSE UPS



CONVIC



ROYAL PARK SKATEPARK EXTENSION