

## The Concept

The design for the playspace draws on both the surrounding natural landforms and landscape as well as the english style collectors garden that was implemented early last century. It has also been inspired by the movement of water, the eddies and swirls, and its ability to generate power.

In order to stay above the flood level and create better access to the built amenity the site has been raised, also allowing an elevated view out across the gorge. The suggested boulder retaining edge required as a result provides a playful and challenging component to the space.

The play experience has been designed to be as engaging and inclusive as possible with the integration of an all abilities swing, raised nature based play experiences, an accessible path through the playspace and a sensory garden to weave through or retreat to.

## Planting Strategy

The plant palette has been selected from the existing native vegetation present in the gorge. In order to capture the cultural heritage of the more english type style of planting, an area has been set aside near the slide to work as a sensory, secret garden type space in which to display native plantings in a more formalised manner without compromising the natural ecosystem of the gorge.

### Suggested plants for Native Planting Zone:

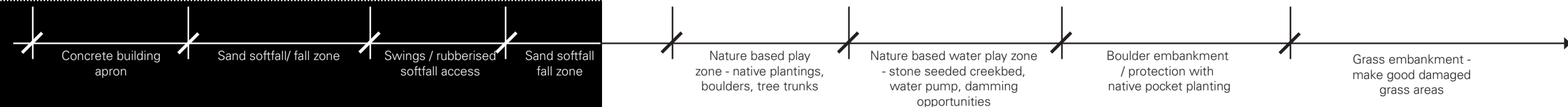
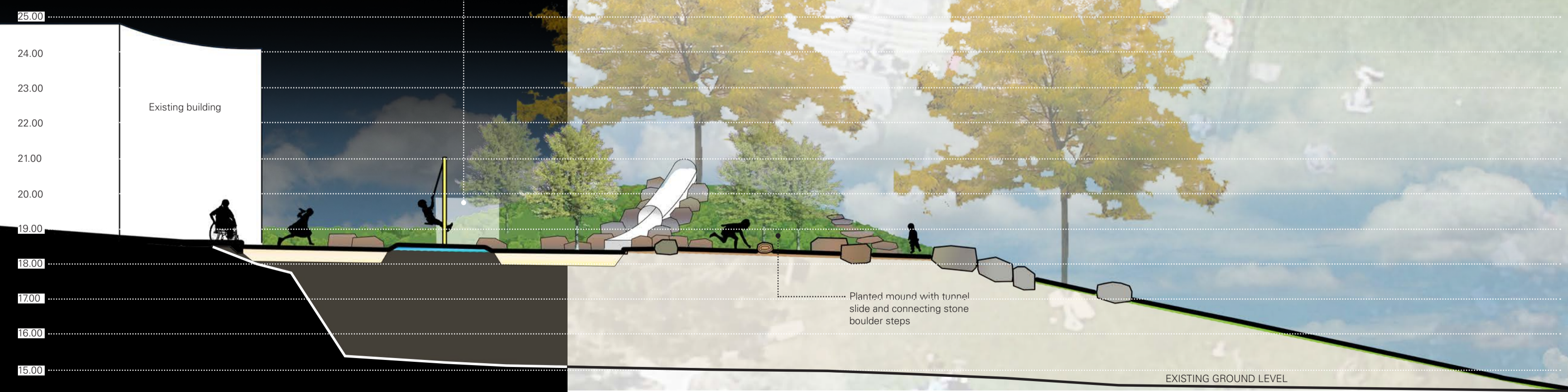
*Allocasuarina verticillata* 'Drooping Sheoak'  
*Allocasuarina littoralis* 'Black Sheoak'  
*Banksia marginata* 'SilverBanksia'  
*Beyeria viscosa* 'Sticky Wallaby Bush'  
*Billardiera mutabilis* 'Common Apple Berry'  
*Clematis aristata* 'Old Man's Beard'  
*Correa reflexa* 'Green Correa'  
*Crysocephalum apiculatum* 'Common Everlasting'  
*Dianella revoluta* 'Blue Flax Lily'  
*Dichelacne crinita* 'Long Hair Plume Grass'  
*Diplarrena moraea* 'White Flag Iris'  
*Lomandra longifolia* 'Mat Rush'  
*Olearia argophylla* 'Musk Daisybush'  
*Pemelia nivea* 'Cotton Bush'  
*Pomaderris elliptica* 'Yellow Dogwood'  
*Prostanthera rotundifolia* 'Round Leaf Mint Bush'  
*Tetradlea pilosa* 'Black Eyed Susan'  
*Themeda triandra* 'Kangaroo Grass'

### Suggested plants for Cultural Heritage Planting Zone:

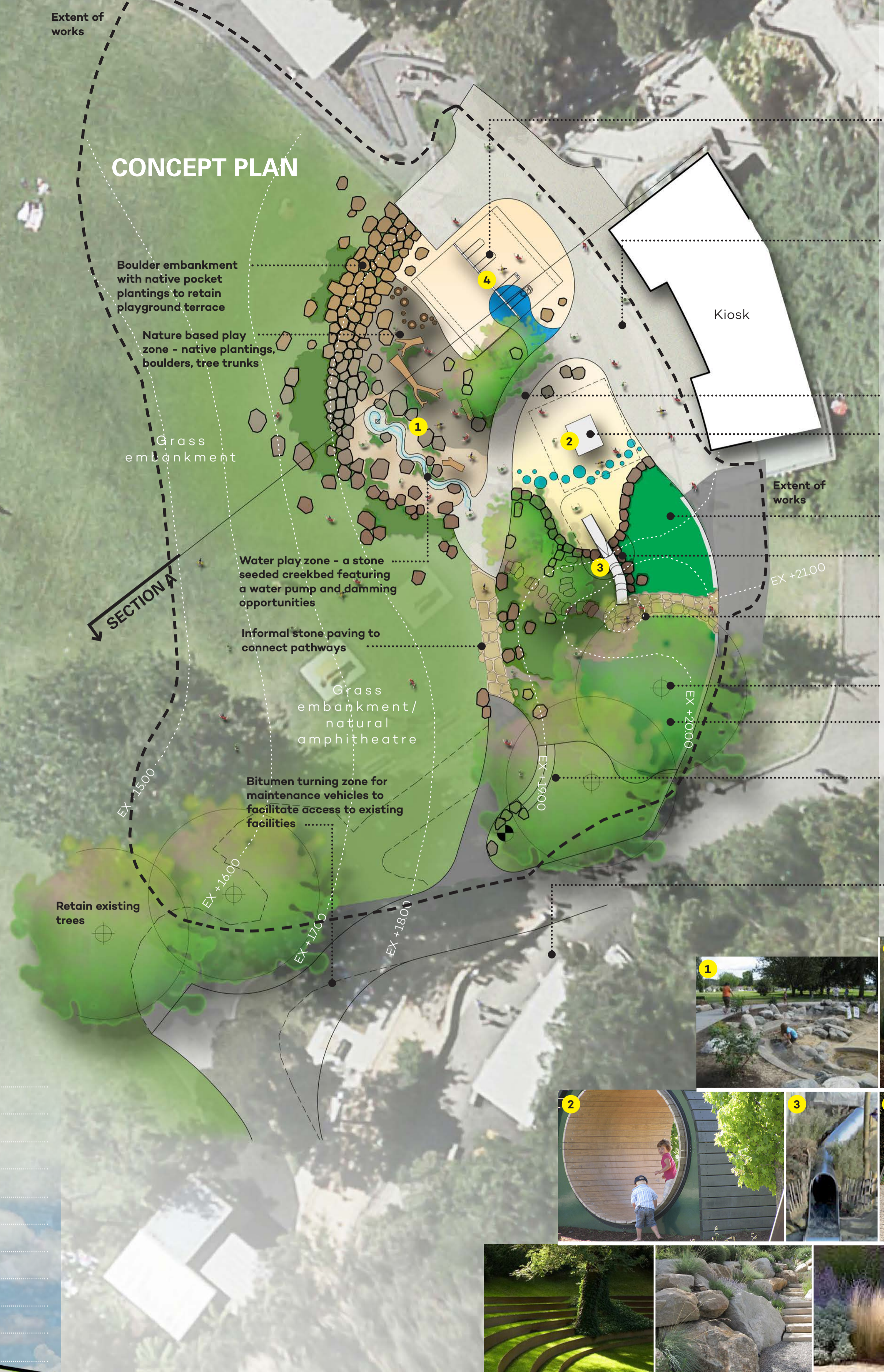
*Blechnum gibbum* 'Silver Lady Fern'  
*Calytix tetragona* 'Fringe Myrtle'  
*Dicksonia antarctica* 'Tree Fern'  
*Indigofera australis* 'Native Indigo'  
*Stylidium graminifolium* 'Trigger Plant'

## SECTION A/A

Existing trees to be retained and protected  
 Mouse wheel runner



## CONCEPT PLAN



Prepared for the City of Launceston



# Cataract Gorge Playspace Concept